



Central Bank of the Islamic Republic of Iran
General Directorate of Economic Statistics

Producer Price Index in Iran
Ordibehesht 1385
(April 21 - May 21, 2006)
Monthly Report

Summary Results of the Producer Price Index in Iran

Ordibehesht 1385

increase



no change



decrease



Percent change compared to

Groups

previous month

similar month of
the previous year

General Index

1.2



7.1



Major Groups:

1- Agriculture, Animal Husbandry and Forestry

0.1



0.9



2- Fishing

2.4



4.9



3- Mining and Quarrying

2.8



34.1



4- Manufacturing

2.4



8.3



5- Electricity, Gas and Water Supply

0.2



0.3



6- Repairing of Motor Vehicles

2.1



16.1



7- Hotels and Restaurants

1.4



12.0



8- Transport, Storage and Communications

0.3



10.9



9- Financial Intermediation

0.0



4.0



10- Real Estate, Renting and Business Activities

0.8



13.4



11- Education

0.0



24.5



12- Health and Social Work

1.6



18.5



13- Other Community, Social and Personal Service Activities

0.4



11.3



Special Groups:

1- Agriculture, Animal Husbandry, Forestry and Fishing

0.2



0.8



2- Mining and Quarrying, Manufacturing and Electricity, Gas and Water Supply

2.3



8.3



3- Services

0.6



11.5



Producer Price Index in Iran

Ordibehesht 1385

(1376 = 100)

The Producer Price Index (**PPI**) went up 1.2 percent in Ordibehesht 1385. Showing the index point of 333.1, the **PPI** was 7.1 percent higher than the similar month in 1384.

During the first two months of the current Iranian year, the producer price index rose 6.8 percent compared to the similar preceding period in 1384.

The producer price index increased 8.2 percent during the last twelve months leading to Ordibehesht 1385 compared with the similar preceding period.

In Ordibehesht, the agriculture, animal husbandry and forestry group index went up 0.1 percent.

The fishing group index went up 2.4 percent, which was mainly attributed to the rise in prices of Caspian Sea fish. In this group the prices of Persian Gulf fish went down.

The mining and quarrying group index increased 2.8 percent.

The advance in the prices of motor oil, exported propane and butane, medicine, tire, cement pipe, iron and steel, copper, aluminium and its products, wire and cable, radiator for automobile and furniture mainly caused 2.4 percent rise in the group index of manufacturing. In this group the prices of fresh meat and scale and weigh – bridge went down.

The electricity, gas and water supply group index declined 0.2 percent.

The repairing of motor vehicles group index increased 2.1 percent.

The hotels and restaurants group index went up 1.4 percent, which was mainly due to the rise in the prices of restaurants and buffet.

The transport, storage and communications group index increased 0.3 percent.

The financial intermediation group index and the education group index had no change.

The real estate, renting and business activities group index went up 0.8 percent.

The advance in the prices of hospital and medical activities mainly caused 1.6 percent increase in the group index of health and social work.

The other community, social and personal service activities group index rose 0.4 percent.

Producer Price Index in Iran (1376 = 100)

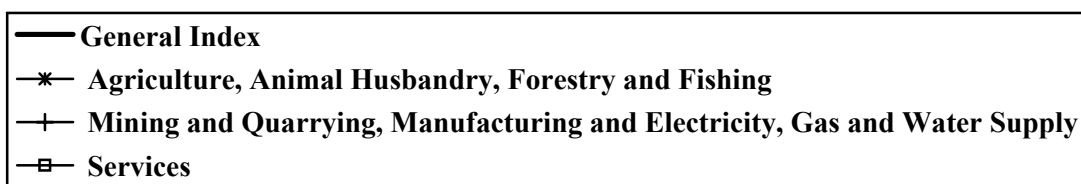
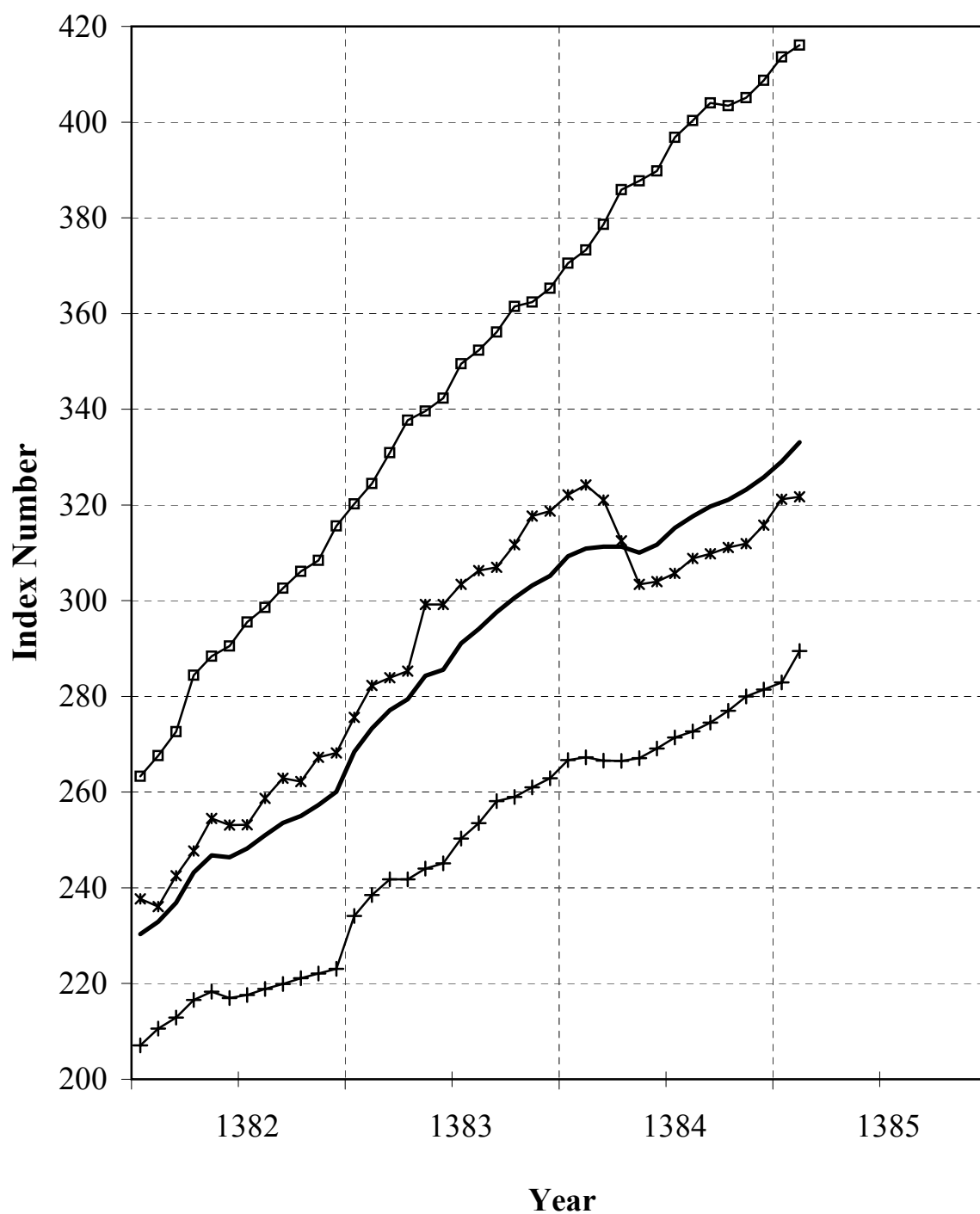


Table 1
Producer Price Index in Iran
Index Numbers and Their Percent Changes
Ordibehesht 1385
(1376 = 100)

Description	Base Year Weight	Index Number in Ordibehesht 1385	Percent Change			
			Ordibehesht 1385 compared to:		Ordibehesht 1384 compared to:	
			previous month	similar month of the previous year	previous month	similar month of the previous year
Genral Index	100.00	333.1	1.2	7.1	0.5	13.8
Major Groups and Selected Sub Groups:						
1- Agriculture, Animal Husbandry and Forestry	23.19	320.9	0.1	-0.9	0.7	14.7
Agriculture, animal husbandry and related services	22.94	321.2	0.1	-1.0	0.7	14.7
Agriculture	12.56	337.5	-0.3	-3.7	1.9	21.8
Cereals, pulses and other products	5.23	319.4	0.0	10.0	0.1	9.9
Cereals	3.50	318.6	0.0	9.0	0.2	13.1
Pulses	0.39	330.3	0.0	30.2	0.0	9.9
Oil seeds	0.34	288.4	0.0	6.0	0.0	14.4
Other products	1.00	328.6	0.0	8.2	0.0	-0.6
Vegetables	3.31	407.3	-0.7	-6.0	5.1	22.4
Patch vegetables	0.67	268.2	1.4	-19.0	0.0	-10.6
Garden vegetables	0.87	366.1	0.1	-5.4	-3.5	18.6
Leaf vegetables	0.47	390.9	-13.7	6.8	-10.0	1.0
Root vegetables	0.21	542.9	-1.3	78.8	1.7	-10.8
Other vegetables	1.09	506.9	3.4	-13.6	18.7	60.7
Fruits, dried fruits, spices and tea	4.02	303.8	-0.1	-15.6	0.5	36.7
Citrus	0.85	299.3	0.0	-3.5	0.0	24.3
Fruits with seeds and pits	1.62	337.4	-0.4	-28.5	0.5	49.2
Dried fruits	1.33	286.7	-0.3	-0.4	0.1	30.6
Spices and tea	0.22	179.2	4.3	5.3	9.7	-10.2
Animal husbandry	10.09	304.2	0.6	2.9	-1.0	5.9
Live animals	6.48	339.0	0.0	1.8	-2.3	6.5
Milk	1.75	259.8	-2.1	8.5	1.9	6.2
Other animals and animals product	1.86	225.1	7.5	3.0	3.3	2.7
Related services to agriculture and animal husbandary	0.29	208.6	0.1	-1.9	0.0	-1.2
Forestry	0.25	291.9	2.5	13.2	3.1	11.0
2- Fishing	0.42	367.6	2.4	4.9	-1.5	24.9
3- Mining and Quarrying	0.94	241.1	2.8	34.1	-0.4	11.1
4- Manufacturing	45.17	289.4	2.4	8.3	0.3	12.6
Food products and beverages	11.21	312.3	-0.6	3.0	-0.7	11.1
Meat and its products, compotes and conserves, butter and vegetable oils	5.66	326.2	-1.5	0.8	-1.6	8.2
Dairy products	1.59	298.5	1.0	11.3	0.4	7.1
Wheat flour, starch and its products and prepared animal feeds	0.66	339.3	0.1	0.6	-0.1	48.1
Other food products	2.90	290.1	0.4	4.1	0.2	13.1

Table 1 (continued)

Description	Base Year Weight	Index Number in Ordibehesht 1385	Percent Change			
			Ordibehesht 1385 compared to:		Ordibehesht 1384 compared to:	
			previous month	similar month of the previous year	previous month	similar month of the previous year
Beverages	0.40	287.9	0.1	4.3	0.0	6.4
Tobacco products	0.17	265.1	0.0	14.9	-0.7	7.5
Textiles	4.94	210.8	0.9	8.0	1.4	14.4
Spinning and weaving	1.99	180.3	0.7	3.4	0.1	9.5
Other textiles	1.89	245.2	1.0	13.6	1.8	21.4
Knitted and crocheted fabrics and articles	1.06	206.5	0.8	4.8	2.4	9.7
Wearing apparel	2.52	170.3	0.5	6.3	0.1	9.6
Leather and leather products	1.69	172.5	0.6	5.6	0.3	7.5
Wood and wooden products	0.54	258.2	0.3	6.5	-0.4	12.3
Paper and paper products	0.49	233.3	0.3	8.7	0.7	19.9
Publishing, printing and reproduction	0.30	266.9	-1.3	4.0	0.7	15.2
Carbon and refined petroleum products	1.98	494.0	1.2	2.3	2.2	6.9
Chemical and petrochemical products	3.80	358.2	1.0	8.4	0.4	25.7
Rubber and plastic products	0.87	244.7	3.6	11.2	1.1	17.4
Non - metallic mineral products	2.23	343.8	0.9	6.6	0.5	6.6
Basic metals	4.15	402.9	12.1	19.6	-0.9	14.6
Fabricated metallic products except machinery	0.91	289.0	1.0	6.2	3.1	26.4
Machinery	2.93	203.3	1.1	5.9	1.4	9.2
Transformers and electrical equipment	0.94	346.2	18.2	38.0	0.5	14.9
Radio, television and communication equipment	0.38	122.4	1.7	-1.1	0.0	0.1
Medical, precision and optical instruments	0.12	229.3	0.7	7.2	1.1	11.2
Motor vehicles and related equipment	3.41	187.7	0.9	2.7	1.2	4.2
Other transport equipment	0.37	137.7	0.1	1.5	0.2	-4.8
Furniture and other manufacturing	1.19	411.0	6.9	36.3	-0.2	20.4
5- Electricity, Gas and Water Supply	1.80	316.4	-0.2	-0.3	-0.3	3.3
6- Repairing of Motor Vehicles	0.32	358.4	2.1	16.1	1.8	17.9
7- Hotels and Restaurants	0.73	406.3	1.4	12.0	0.7	13.8
8- Transport, Storage and Communications	10.53	360.9	0.3	10.9	-0.1	12.3
Land transport	9.38	368.5	0.3	11.7	-0.1	12.4
Air transport	0.42	414.7	0.0	3.9	-0.5	20.8
Post and telecommunications	0.59	209.2	0.0	0.0	0.1	1.2
9- Financial Intermediation	1.17	823.8	0.0	-4.0	-0.4	20.0
10- Real Estate, Renting and Business Activities	11.19	410.0	0.8	13.4	1.1	15.6
11- Education	0.59	555.1	0.0	24.5	0.0	19.2
12- Health and Social Work	2.23	458.5	1.6	18.5	3.7	18.3
13- Other Community, Social and Personal Service Activities	1.72	430.3	0.4	11.3	1.1	13.1
Special Groups:						
1- Agriculture, Animal Husbandry, Forestry and Fishing	23.61	321.7	0.2	-0.8	0.7	14.8
2- Mining and Quarrying, Manufacturing and Electricity, Gas and Water Supply	47.91	289.5	2.3	8.3	0.2	12.1
3- Services	28.48	416.1	0.6	11.5	0.8	15.0

Producer Price Index in Iran
General, Major and Special Groups Index Numbers
(1376 = 100)

Description Period	General Index	Major Groups							
		Agriculture, Animal Husbandry and Forestry	Fishing	Mining and Quarrying	Manufacturing	Electricity, Gas and Water Supply	Repairing of Motor Vehicles	Hotels and Restaurants	Transport, Storage and Communications
1370	22.1	22.9		27.0	21.0	11.0		19.3	18.6
1371	28.2	29.2		34.9	26.8	19.0		26.0	24.7
1372	34.9	35.8		36.9	33.7	24.6		33.7	32.2
1373	46.4	46.9		41.3	46.3	45.4		44.6	45.5
1374	68.5	74.1		65.8	69.8	55.9		64.9	65.8
1375	86.5	87.8		90.0	90.1	66.9		84.9	84.2
1376	100.0	100.0	100.0	100.0	100.0	100.0	100.0	100.0	100.0
1377	118.7	122.6	128.0	122.8	117.0	131.4	121.1	125.7	115.3
1378	145.9	152.7	152.5	130.5	145.7	166.8	146.6	156.7	138.1
1379	169.6	180.0	190.8	152.8	168.5	190.8	161.9	185.2	152.1
1380	188.1	194.9	211.8	146.1	177.3	211.6	178.7	210.0	188.3
1381	213.4	218.7	260.7	151.2	195.5	226.0	201.2	246.7	223.1
1382	246.8	253.3	272.9	157.7	216.4	266.7	236.3	289.5	266.8
1383	288.3	298.6	334.3	170.6	248.2	315.1	280.2	335.9	304.7
1384	315.6	311.2	385.3	198.8	271.4	317.7	323.9	377.9	342.3
1384:									
Ordibehesht	310.9	323.7	350.4	179.8	267.1	317.3	308.7	362.8	325.5
Khordad	311.3	320.1	370.1	182.5	266.3	318.6	313.9	367.5	327.1
Tir	311.3	311.1	389.3	182.4	266.1	319.0	316.4	372.6	339.2
Mordad	310.0	301.8	394.9	180.2	266.8	318.8	317.8	374.3	340.1
Shahrivar	311.7	302.4	391.2	198.3	268.5	319.0	319.8	380.4	340.4
Mehr	315.2	304.1	395.4	200.8	271.1	316.4	321.6	381.5	352.2
Aban	317.6	307.2	395.4	206.3	272.4	316.6	326.8	383.9	352.7
Azar	319.7	308.3	395.4	209.8	274.1	316.6	328.8	383.6	353.6
Dey	321.1	309.6	395.4	210.3	276.8	317.2	339.1	386.3	348.4
Bahman	323.2	310.4	395.4	219.5	279.8	317.2	341.7	388.3	348.5
Esfand	325.8	314.4	395.4	234.5	281.0	317.2	349.3	393.1	354.0
1385:									
Farvardin	329.1	320.5	358.9	234.6	282.5	316.9	350.9	400.6	360.0
Ordibehesht	333.1	320.9	367.6	241.1	289.4	316.4	358.4	406.3	360.9

Table 2 (continued)

Description Period	General Index	Major Groups					Special Groups		
		Financial Intermediation	Real Estate, Renting and Business Activities	Education	Health and Social Work	Other Community Social and Personal Service Activities	Agriculture, Animal Husbandry, Forestry and Fishing	Mining and Quarrying, Manufacturing and Electricity, Gas and Water Supply	Services
1370	22.1	61.8	24.4	19.8	14.3		23.0	20.5	24.6
1371	28.2	69.0	30.4	28.2	20.4		29.2	26.4	30.8
1372	34.9	77.0	36.4	41.2	27.6		35.8	33.3	37.6
1373	46.4	77.4	44.4	58.1	38.0		46.9	46.2	46.3
1374	68.5	99.2	56.8	74.1	53.5		74.1	69.1	61.6
1375	86.5	99.6	76.5	94.5	76.1		87.8	89.0	80.0
1376	100.0	100.0	100.0	100.0	100.0	100.0	100.0	100.0	100.0
1377	118.7	100.2	119.3	110.4	122.7	118.0	122.7	117.7	117.2
1378	145.9	120.1	139.2	132.0	153.6	141.8	152.7	146.2	139.7
1379	169.6	156.6	164.4	168.9	183.7	170.8	180.1	169.0	162.0
1380	188.1	267.7	195.8	224.2	213.7	216.5	195.2	178.0	199.4
1381	213.4	370.3	234.1	275.9	251.4	242.0	219.4	195.7	238.2
1382	246.8	598.1	278.8	333.6	295.5	302.9	253.7	217.1	291.1
1383	288.3	801.4	331.7	409.9	350.9	357.6	299.2	249.2	345.2
1384	315.6	848.9	380.6	494.3	422.0	405.1	312.5	271.7	392.0
1384 :									
Ordibehesht	310.9	857.8	361.7	445.8	386.9	386.7	324.2	267.3	373.3
Khordad	311.3	878.2	365.9	445.8	404.1	398.5	321.0	266.6	378.6
Tir	311.3	875.8	370.0	445.9	416.2	401.0	312.5	266.5	385.9
Mordad	310.0	858.6	374.1	447.5	422.2	401.9	303.4	267.1	387.7
Shahrivar	311.7	849.2	378.3	450.0	428.7	401.5	304.0	269.1	389.8
Mehr	315.2	836.1	382.6	476.3	432.2	411.7	305.7	271.4	396.8
Aban	317.6	828.5	386.7	554.9	434.6	413.2	308.8	272.7	400.3
Azar	319.7	845.4	392.7	555.0	437.6	414.0	309.8	274.5	404.0
Dey	321.1	840.2	395.3	555.0	440.5	415.4	311.1	277.0	403.4
Bahman	323.2	833.8	399.3	555.1	443.1	416.2	311.9	280.0	405.1
Esfand	325.8	821.9	403.4	555.0	444.9	418.2	315.8	281.4	408.7
1385 :									
Farvardin	329.1	823.6	406.6	555.1	451.3	428.7	321.2	282.9	413.6
Ordibehesht	333.1	823.8	410.0	555.1	458.5	430.3	321.7	289.5	416.1