



Central Bank of the Islamic Republic of Iran
General Directorate of Economic Statistics

Producer Price Index in Iran

Esfand 1387

(February 19 - March 20, 2009)

(1376 = 100)

Economic Statistics

Department

www.cbi.ir

Farvardin 1388

(April 2009)

Summary Results of the Producer Price Index in Iran

Esfand 1387

(1376 = 100)

increase



no change



decrease



Percent change compared to

Groups

previous month

similar month of
the previous year

General Index

0.9



15.7



Major Groups:

1- Agriculture, Animal Husbandry and Forestry

1.9



25.6



2- Fishing

6.1



16.0



3- Mining and Quarrying

0.9



15.1



4- Manufacturing

0.4



7.9



5- Electricity, Gas and Water Supply

0.0



2.4



6- Repairing of Motor Vehicles

3.1



19.8



7- Hotels and Restaurants

1.1



23.7



8- Transport, Storage and Communications

1.7



8.2



9- Financial Intermediation

1.1



7.4



10- Real Estate, Renting and Business Activities

0.5



24.4



11- Education

0.0



16.0



12- Health and Social Work

1.1



23.9



13- Other Community, Social and Personal Service Activities

1.7



29.8



Special Groups:

1- Agriculture, Animal Husbandry, Forestry and Fishing

1.7



25.4



2- Mining and Quarrying, Manufacturing
and Electricity, Gas and Water Supply

0.4



7.4



3- Services

0.9



18.5



Producer Price Index in Iran

Esfand 1387

(1376 = 100)

The Producer Price Index (**PPI**) went up 0.9 percent in Esfand 1387. Showing the index point of 524.0, the **PPI** was 15.7 percent higher than the similar month in 1386.

On average, the Producer Price Index in 1387 increased 21.8 percent compared to the previous year.

In Esfand, the agriculture, animal husbandry and forestry group index went up 1.9 percent, which was mainly attributed to the rise in the indices of "live animals and milk", "poultry" and "egg".

The fishing group index declined 6.1 percent which was mainly due to the decrease in the indices of "Caspian Sea fish" and "Persian Gulf fish".

The mining and quarrying group index and the manufacturing group index moved up 0.9 percent and 0.4 percent, respectively.

The electricity, gas and water supply group index and the education group index had no change.

The repairing of motor vehicles group index increased 3.1 percent.

As a result of rising in the index of "hotels and inns", the hotels and restaurants group index went up 1.1 percent.

The advance in the index of "transport of passengers by bus" principally caused 1.7 percent increase in the group index of transport, storage and communications group index.

The financial intermediation group index fell 1.1 percent.

The real estate, renting and business activities group index moved up 0.5 percent.

The health and social work group index went up 1.1 percent which was mostly attributed to the rise in index of "medical activities".

The other community, social and personal service activities group index increased 1.7 percent.

Producer Price Index in Iran (1376 = 100)

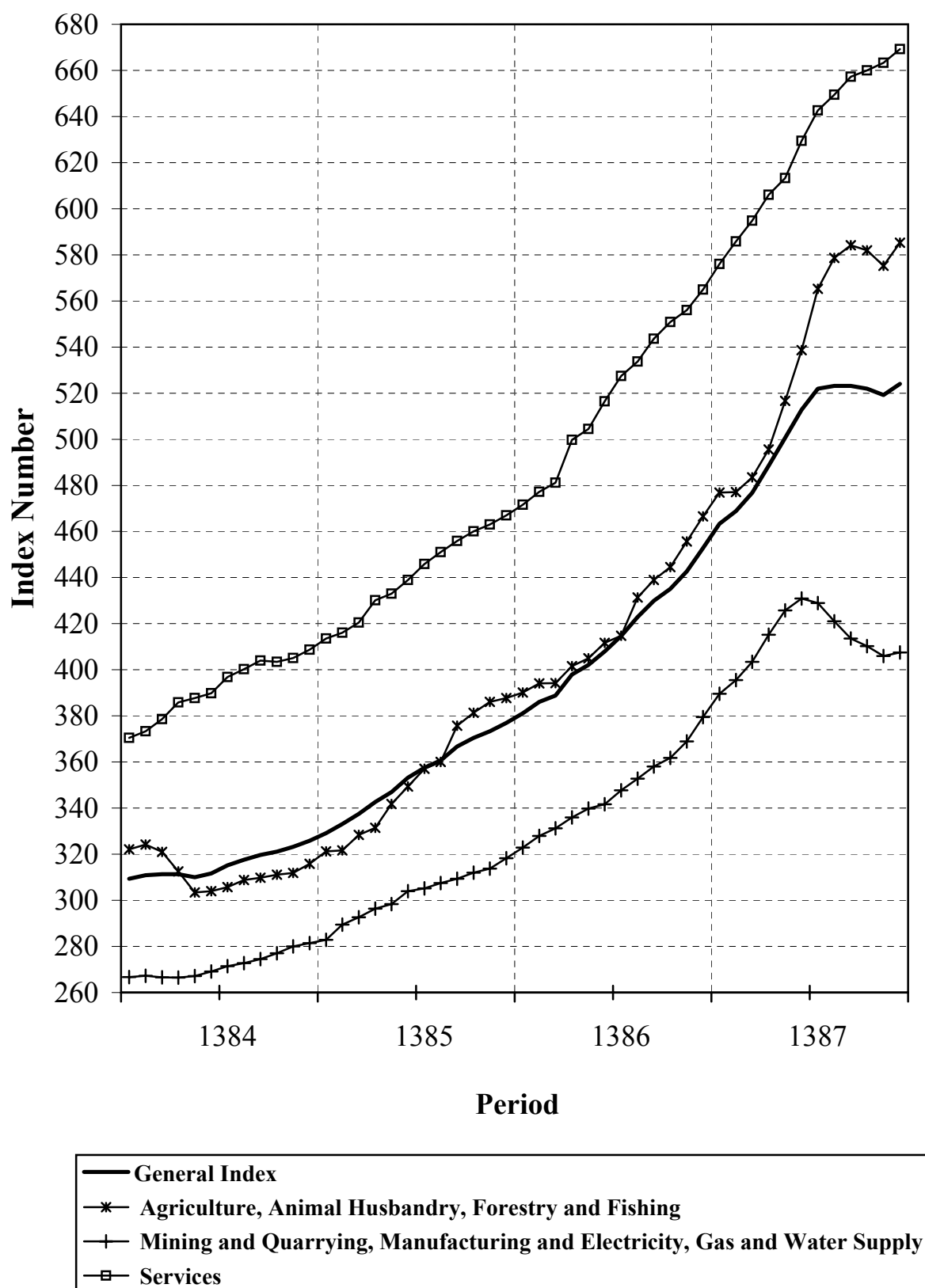


Table 1
Producer Price Index in Iran
Index Numbers and Their Percent Changes
 Esfand 1387
 (1376 = 100)

Description	Base Year Weight	Index Number in Esfand 1387	Percent Change			
			Esfand 1387 compared to		Esfand 1386 compared to	
			previous month	similar month of the previous year	previous month	similar month of the previous year
Genral Index	100.00	524.0	0.9	15.7	2.3	20.1
Major Groups and Selected Sub Groups:						
1- Agriculture, Animal Husbandry and Forestry	23.19	584.9	1.9	25.6	2.3	20.4
Agriculture, animal husbandry and related services	22.94	584.8	1.8	25.5	2.6	20.3
Agriculture	12.56	663.8	0.5	42.3	0.5	10.8
Cereals, pulses and other products	5.23	577.7	-0.1	35.4	0.1	15.4
Cereals	3.50	628.6	0.0	61.5	0.0	13.1
Pulses	0.39	607.2	-0.6	23.6	1.1	1.2
Oil seeds	0.34	476.7	0.0	32.6	0.0	25.2
Other products	1.00	422.5	0.0	-24.1	0.0	25.7
Vegetables	3.31	802.5	1.7	57.5	1.2	0.3
Patch vegetables	0.67	657.9	0.0	85.7	0.0	-16.0
Garden vegetables	0.87	752.0	1.5	26.8	1.6	8.0
Leaf vegetables	0.47	777.1	10.5	37.5	4.4	-2.5
Root vegetables	0.21	686.1	-1.4	64.9	-0.2	-18.6
Other vegetables	1.09	965.1	0.1	81.8	0.1	7.2
Fruits, dried fruits, spices and tea	4.02	661.9	0.1	37.2	0.4	15.9
Citrus	0.85	466.0	0.7	-9.3	1.3	-1.4
Fruits with seeds and pits	1.62	932.9	0.0	60.4	0.0	23.1
Dried fruits	1.33	473.8	0.0	32.7	0.5	12.9
Spices and tea	0.22	555.5	0.3	41.4	-0.1	85.7
Animal husbandry	10.09	495.8	4.1	5.0	5.3	34.9
Live animals	6.48	545.0	3.1	0.6	5.1	38.3
Milk	1.75	426.5	3.9	17.2	2.7	23.1
Other animals and animals product	1.86	390.1	9.5	17.4	9.4	29.3
Related services to agriculture and animal husbandry	0.29	257.1	0.0	6.9	0.0	4.7
Forestry	0.25	596.8	4.4	41.2	-19.1	29.5
2- Fishing	0.42	600.1	-6.1	16.0	5.1	17.8
3- Mining and Quarrying	0.94	260.0	0.9	-15.1	3.2	8.0
4- Manufacturing	45.17	412.9	0.4	7.9	3.0	20.0
Food products and beverages	11.21	487.8	1.9	15.5	3.1	19.5
Meat and its products, compotes and conserves, butter and vegetable oils	5.66	509.8	2.9	9.3	4.9	23.8
Dairy products	1.59	479.8	1.9	31.8	0.9	17.7
Wheat flour, starch and its products and prepared animal feeds	0.66	491.5	0.0	19.5	0.3	18.2
Other food products	2.90	465.9	0.2	21.8	0.9	12.3

Table 1 (continued)

Description	Base Year Weight	Index Number in Esfand 1387	Percent Change			
			Esfand 1387 compared to		Esfand 1386 compared to	
			previous month	similar month of the previous year	previous month	similar month of the previous year
Beverages	0.40	361.0	0.3	6.1	3.2	12.0
Tobacco products	0.17	317.2	0.0	4.9	0.0	8.7
Textiles	4.94	305.6	-0.7	9.3	2.9	18.7
Spinning and weaving	1.99	235.3	-1.3	7.3	0.3	11.3
Other textiles	1.89	372.8	-0.8	8.0	4.9	25.4
Knitted and crocheted fabrics and articles	1.06	317.9	0.5	14.9	2.6	16.1
Wearing apparel	2.52	237.4	0.1	14.2	1.7	10.9
Leather and leather products	1.69	269.7	0.0	18.4	1.7	23.2
Wood and wooden products	0.54	384.3	0.0	15.8	1.3	12.0
Paper and paper products	0.49	381.9	-2.3	15.4	4.1	28.6
Publishing, printing and reproduction	0.30	374.6	0.0	15.0	0.0	1.7
Carbon and refined petroleum products	1.98	650.4	-0.3	4.8	8.0	23.5
Chemical and petrochemical products	3.80	489.6	0.8	-3.2	2.1	28.5
Rubber and plastic products	0.87	338.4	-0.1	8.0	0.0	15.5
Non - metallic mineral products	2.23	613.8	-0.1	49.1	1.2	17.1
Basic metals	4.15	495.0	-1.9	-15.0	2.4	21.7
Fabricated metallic products except machinery	0.91	476.7	-0.2	25.8	0.5	19.6
Machinery	2.93	282.2	0.0	12.3	0.2	14.4
Transformers and electrical equipment	0.94	397.8	-1.3	-1.7	4.9	15.5
Radio, television and communication equipment	0.38	110.9	0.7	-0.1	0.0	-8.3
Medical, precision and optical instruments	0.12	326.2	0.6	10.7	-0.2	19.0
Motor vehicles and related equipment	3.41	220.0	1.0	10.3	0.5	3.7
Other transport equipment	0.37	188.5	0.1	8.5	0.9	19.4
Furniture and other manufacturing	1.19	552.6	2.1	-8.8	10.5	38.8
5- Electricity, Gas and Water Supply	1.80	348.8	0.0	2.4	-0.1	6.2
6- Repairing of Motor Vehicles	0.32	561.8	3.1	19.8	2.8	17.2
7- Hotels and Restaurants	0.73	694.4	1.1	23.7	3.8	24.0
8- Transport, Storage and Communications	10.53	498.2	1.7	8.2	1.5	17.7
Land transport	9.38	510.2	1.8	7.5	1.7	18.0
Air transport	0.42	626.3	0.6	19.7	-0.1	24.6
Post and telecommunications	0.59	231.1	0.7	9.5	0.5	0.9
9- Financial Intermediation	1.17	925.2	-1.1	7.4	-0.3	0.0
10- Real Estate, Renting and Business Activities	11.19	755.9	0.5	24.4	1.9	27.5
11- Education	0.59	874.0	0.0	16.0	0.0	14.0
12- Health and Social Work	2.23	817.8	1.1	23.9	1.2	24.2
13- Other Community, Social and Personal Service Activities	1.72	725.5	1.7	29.8	2.1	18.7
Special Groups:						
1- Agriculture, Animal Husbandry, Forestry and Fishing	23.61	585.2	1.7	25.4	2.4	20.3
2- Mining and Quarrying, Manufacturing and Electricity, Gas and Water Supply	47.91	407.5	0.4	7.4	2.9	19.2
3- Services	28.48	669.2	0.9	18.5	1.6	21.0

Producer Price Index in Iran
General, Major and Special Groups Index Numbers
(1376 = 100)

Description Period	General Index	Major Groups							
		Agriculture, Animal Husbandry and Forestry	Fishing	Mining and Quarrying	Manufacturing	Electricity, Gas and Water Supply	Repairing of Motor Vehicles	Hotels and Restaurants	Transport, Storage and Communications
1370	22.1	22.9		27.0	21.0	11.0		19.3	18.6
1371	28.2	29.2		34.9	26.8	19.0		26.0	24.7
1372	34.9	35.8		36.9	33.7	24.6		33.7	32.2
1373	46.4	46.9		41.3	46.3	45.4		44.6	45.5
1374	68.5	74.1		65.8	69.8	55.9		64.9	65.8
1375	86.5	87.8		90.0	90.1	66.9		84.9	84.2
1376	100.0	100.0	100.0	100.0	100.0	100.0	100.0	100.0	100.0
1377	118.7	122.6	128.0	122.8	117.0	131.4	121.1	125.7	115.3
1378	145.9	152.7	152.5	130.5	145.7	166.8	146.6	156.7	138.1
1379	169.6	180.0	190.8	152.8	168.5	190.8	161.9	185.2	152.1
1380	188.1	194.9	211.8	146.1	177.3	211.6	178.7	210.0	188.3
1381	213.4	218.7	260.7	151.2	195.5	226.0	201.2	246.7	223.1
1382	246.8	253.3	272.9	157.7	216.4	266.7	236.3	289.5	266.8
1383	288.3	298.6	334.3	170.6	248.2	315.1	280.2	335.9	304.7
1384	315.6	311.2	385.3	198.8	271.4	317.7	323.9	377.9	342.3
1385	354.0	352.6	404.0	268.1	302.6	317.7	376.5	425.6	376.1
1386	413.5	420.6	429.3	288.4	349.2	332.5	433.9	503.6	432.4
1387	503.7	537.8	563.3	270.7	417.9	345.4	519.3	651.2	480.6
1386, Esfand	452.8	465.6	517.2	306.4	382.6	340.6	468.8	561.3	460.4
1387, Farvardin	463.3	476.9	477.1	293.0	393.6	340.6	475.2	584.0	463.0
Ordibehesht	468.9	477.1	477.6	293.6	399.8	340.6	485.1	599.9	467.3
Khordad	476.8	483.8	467.4	267.6	408.7	340.6	493.9	622.7	471.5
Tir	488.5	496.0	478.1	276.0	421.0	342.6	502.7	637.4	471.3
Mordad	500.6	516.9	504.3	275.1	432.1	347.2	509.0	645.8	471.8
Shahrivar	512.8	538.0	570.5	281.4	437.3	347.2	518.4	649.3	475.6
Mehr	521.9	564.4	610.6	269.7	435.5	347.2	525.0	660.8	485.4
Aban	523.2	577.5	636.2	255.9	427.4	347.2	534.1	671.5	492.1
Azar	523.2	582.7	660.2	256.4	419.6	347.2	538.3	678.0	492.9
Dey	521.9	580.9	638.4	262.3	415.9	347.2	543.0	683.8	487.9
Bahman	519.2	574.2	639.1	257.8	411.3	348.8	544.9	686.7	489.7
Esfand	524.0	584.9	600.1	260.0	412.9	348.8	561.8	694.4	498.2

Table 2 (continued)

Description Period	General Index	Major Groups					Special Groups		
		Financial Intermediation	Real Estate, Renting and Business Activities	Education	Health and Social Work	Other Community, Social and Personal Service Activities	Agriculture, Animal Husbandry, Forestry and Fishing	Mining and Quarrying, Manufacturing and Electricity, Gas and Water Supply	Services
1370	22.1	61.8	24.4	19.8	14.3		23.0	20.5	24.6
1371	28.2	69.0	30.4	28.2	20.4		29.2	26.4	30.8
1372	34.9	77.0	36.4	41.2	27.6		35.8	33.3	37.6
1373	46.4	77.4	44.4	58.1	38.0		46.9	46.2	46.3
1374	68.5	99.2	56.8	74.1	53.5		74.1	69.1	61.6
1375	86.5	99.6	76.5	94.5	76.1		87.8	89.0	80.0
1376	100.0	100.0	100.0	100.0	100.0	100.0	100.0	100.0	100.0
1377	118.7	100.2	119.3	110.4	122.7	118.0	122.7	117.7	117.2
1378	145.9	120.1	139.2	132.0	153.6	141.8	152.7	146.2	139.7
1379	169.6	156.6	164.4	168.9	183.7	170.8	180.1	169.0	162.0
1380	188.1	267.7	195.8	224.2	213.7	216.5	195.2	178.0	199.4
1381	213.4	370.3	234.1	275.9	251.4	242.0	219.4	195.7	238.2
1382	246.8	598.1	278.8	333.6	295.5	302.9	253.7	217.1	291.1
1383	288.3	801.4	331.7	409.9	350.9	357.6	299.2	249.2	345.2
1384	315.6	848.9	380.6	494.3	422.0	405.1	312.5	271.7	392.0
1385	354.0	845.6	441.4	605.4	498.3	453.5	353.5	302.5	441.3
1386	413.5	886.6	538.9	700.1	605.7	516.4	420.7	347.3	518.9
1387	503.7	938.3	693.8	804.7	761.9	683.4	538.2	412.3	628.9
1386, Esfand	452.8	861.2	607.4	753.5	660.0	559.1	466.5	379.5	564.9
1387, Farvardin	463.3	863.5	619.1	753.5	667.8	627.7	476.9	389.6	576.0
Ordibehesht	468.9	870.7	630.8	753.5	685.4	650.7	477.1	395.5	585.8
Khordad	476.8	938.4	636.2	753.5	706.3	655.8	483.5	403.4	594.8
Tir	488.5	1000.5	649.4	753.7	739.9	662.2	495.6	415.2	606.0
Mordad	500.6	1007.1	662.2	754.6	753.8	668.7	516.7	425.8	613.3
Shahrivar	512.8	992.8	695.8	761.5	769.4	678.5	538.6	430.9	629.4
Mehr	521.9	966.4	712.6	800.7	789.1	699.7	565.2	428.9	642.6
Aban	523.2	931.5	722.9	828.9	795.4	703.3	578.6	421.0	649.4
Azar	523.2	899.9	740.7	874.3	802.0	706.2	584.1	413.6	657.2
Dey	521.9	928.3	747.7	873.8	806.5	708.6	581.9	410.3	660.0
Bahman	519.2	935.4	752.3	873.8	809.1	713.7	575.3	406.0	663.3
Esfand	524.0	925.2	755.9	874.0	817.8	725.5	585.2	407.5	669.2