



Central Bank of the Islamic Republic of Iran
General Directorate of Economic Statistics

Producer Price Index in Iran

Ordibehesht 1390

(April 21 - May 21, 2011)

(1383 = 100)

Economic Statistics

Department

www.cbi.ir

Khordad 1390

(June 2011)

IN THE NAME OF GOD

Summary Results of the Producer Price Index in Iran

Ordibehesht 1390

(1383 = 100)

increase



no change or virtually unchanged



decrease



Groups	Percent change compared to			
	previous month		similar month of the previous year	
General Index	2.6		39.0	
Major Groups:				
1- Agriculture, Hunting and Forestry	0.6		15.6	
2- Fishing	7.9		34.9	
3- Manufacturing	4.1		67.9	
4- Hotels and Restaurants	1.9		14.7	
5- Transport, Storage and Communications	0.2		11.3	
6- Education	0.4		12.0	
7- Health and Social Work	0.9		16.2	
8- Other Community, Social and Personal Service Activities	1.7		21.1	
Special Groups:				
1- Agriculture, Hunting, Forestry and Fishing	0.8		16.2	
2- Manufacturing	4.1		67.9	
3- Services	0.6		13.2	

Producer Price Index in Iran

Ordibehesht 1390

(1383 = 100)

The Producer Price Index (PPI) went up 2.6 percent in Ordibehesht 1390 following a 3.5 percent rise in Farvardin 1390. The index level of 269.2 was 39.0 percent higher than in Ordibehesht 1389.

For the first two months of 1390, the Producer Price Index rose 38.4 percent, compared to the similar period in 1389.

The Producer Price Index has advanced 21.3 percent over the last twelve months.

In Ordibehesht, the agriculture, hunting and forestry group index went up 0.6 percent.

The advances in the indices for Persian Gulf fish and aquaculture principally caused 7.9 percent increase in the group index for fishing.

As a result of rising in the indices for tomato paste, bread, cube sugar, manufacture of textiles, propane, automobile lubricating oils, refining motor oils, heavy oil cuts, chemicals products obtained from chemical processes (domestic use), urea, plastic in primary forms (domestic use), scouring products, iron round bar, iron bloom, billet, aluminium ingot and alloy, pickup truck and transmission, the manufacturing group index moved up 4.1 percent. In this

group, the prices for walnut, soya oilcake, iron slab, copper products and zinc and plumb ingot fell.

The advance in the price of hotels mostly caused 1.9 percent increase in the group index for hotels and restaurants.

The transport, storage and communications group index and the education group index moved up 0.2 percent and 0.4 percent, respectively.

The health and social work group index rose 0.9 percent.

The other community, social and personal service activities group index went up 1.7 percent which was principally due to the increases in the indices for out of school lessons in swimming and body building.

Producer Price Index in Iran (1383=100)

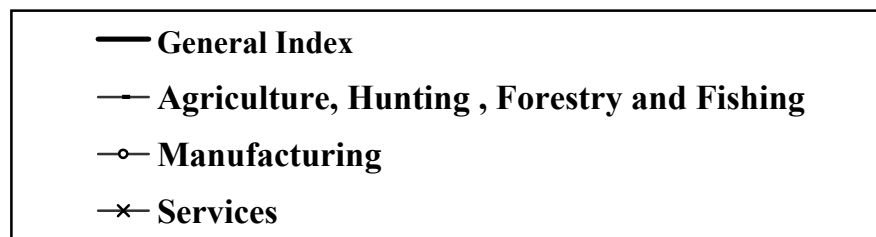
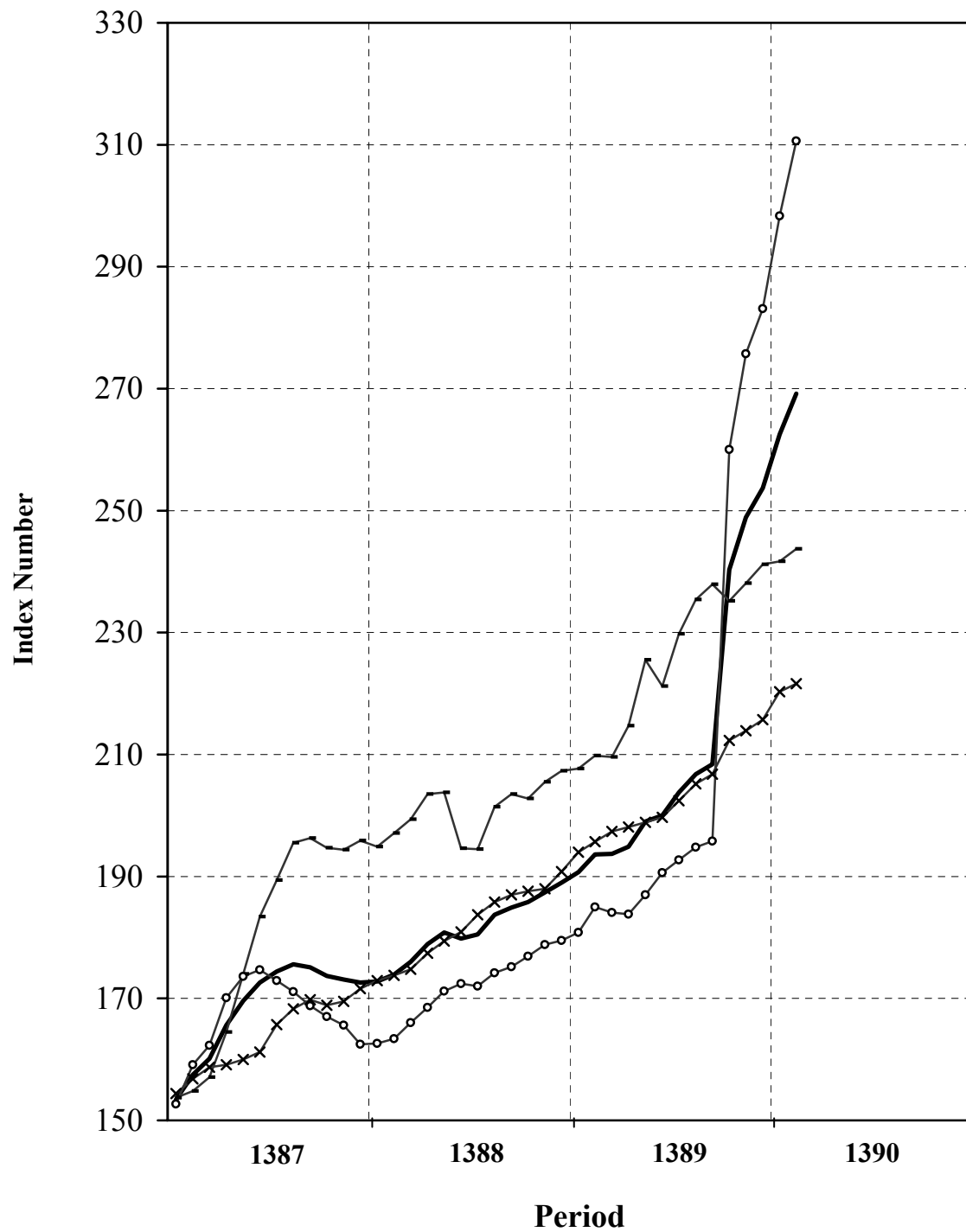


Table 1
Producer Price Index in Iran
Index Numbers and Their Percent Changes
Ordibehesht 1390
(1383 = 100)

Description	Base Year Weight	Index Number in Ordibehesht 1390	Percent Change			
			Ordibehesht 1390 compared to		Ordibehesht 1389 compared to	
			previous month	similar month of the previous year	previous month	similar month of the previous year
General Index	100.00	269.2	2.6	39.0	1.5	11.3
Major Groups and Selected Subgroups:						
1-Agriculture, Hunting and Forestry	21.35	242.6	0.6	15.6	0.9	6.6
Growing of crops; market gardening; horticulture	15.53	248.1	0.0	16.2	0.9	2.8
Growing of cereals and other crops n.e.c.	7.65	229.9	0.1	10.9	0.0	1.1
Cereals	4.85	214.9	0.4	9.1	0.0	-4.2
Forage plant	1.25	271.2	-0.6	9.1	0.0	6.4
Industrial plant	1.18	219.4	0.0	17.4	0.0	22.2
Pulses	0.37	321.0	0.0	19.2	0.0	1.0
Growing of vegetables, horticultural specialties and nursery products	2.47	281.9	-1.5	28.3	6.4	4.4
Patch vegetables	0.94	241.8	-4.8	50.0	-1.6	-9.6
Root vegetables	0.75	302.2	-1.0	18.7	17.9	72.0
Garden vegetables	0.57	309.7	1.8	80.1	7.0	-35.2
Leaf vegetables	0.13	221.9	-0.9	-25.4	0.1	123.5
Other products	0.09	446.8	0.0	-40.1	0.0	-12.3
Growing of fruit, nuts, beverage and spice crops	5.40	258.4	0.6	17.7	-0.3	4.5
Half tropical fruits	1.81	309.6	0.1	8.8	0.0	29.5
Fruits with seeds	1.34	164.5	0.0	26.9	0.0	-29.5
Fruits with pits	0.88	191.9	5.0	-2.3	-1.8	98.5
Fresh nuts	0.77	278.6	0.0	54.5	0.0	2.1
Fruits with tiny pits	0.61	381.9	0.0	24.7	0.0	-30.8
Farming of animals	5.82	227.8	2.5	14.1	0.8	18.7
Farming of cattle, sheep and goats	2.16	269.7	4.7	9.3	2.5	43.5
Production of raw milk	1.86	202.4	1.1	4.3	0.1	4.5
Farming of birds	1.13	157.0	-3.4	-0.3	-1.9	21.8
Other animal farming	0.67	282.7	4.2	110.8	-0.7	-22.7
2- Fishing	0.63	283.4	7.9	34.9	4.6	3.7
Persian Gulf fish	0.35	286.1	5.8	27.9	8.0	2.2
Caspian Sea fish	0.06	201.2	0.0	17.2	0.0	40.3
Aquaculture	0.22	301.9	13.0	51.9	0.0	0.0
3- Manufacturing	48.06	310.6	4.1	67.9	2.3	13.2
Manufacture of food products and beverages	5.84	350.7	13.6	88.2	2.0	6.0
Production, processing and preservation of meat, fish, fruit, vegetables, oils and fats	1.83	198.6	-0.1	22.1	2.6	0.8
Manufacture of dairy products	0.89	167.5	0.5	3.2	5.3	9.3

Table 1 (continued)

Description	Base Year Weight	Index Number in Ordibehesht 1390	Percent Change			
			Ordibehesht 1390 compared to		Ordibehesht 1389 compared to	
			previous month	similar month of the previous year	previous month	similar month of the previous year
Manufacture of grain mill products, starches and starch products, and prepared animal feeds	1.02	714.2	24.7	208.1	-2.7	-6.6
Manufacture of other food products	1.51	450.8	17.4	128.9	0.4	21.8
Manufacture of beverages	0.59	213.8	0.0	12.7	11.5	10.5
Manufacture of tobacco products	0.15	189.1	3.8	60.4	1.9	7.7
Manufacture of textiles	1.97	216.3	3.1	17.1	5.8	19.4
Spinning, weaving and finishing of textiles	1.11	195.6	5.3	32.0	2.9	14.0
Manufacture of other textiles	0.83	244.5	1.0	4.7	8.5	24.9
Manufacture of knitted and crocheted fabrics and articles	0.02	196.9	2.3	9.4	0.3	3.2
Manufacture of wearing apparel; dressing and dyeing of fur	0.08	186.0	1.6	11.3	0.0	2.1
Tanning and dressing of leather; manufacture of luggage, handbags, saddle, harness and footwear	0.19	219.3	2.4	16.0	1.1	7.4
Manufacture of wood and of products of wood and cork, except furniture; manufacture of articles of straw and plaiting materials	0.13	168.9	2.4	10.8	0.0	2.8
Manufacture of paper and paper products	0.54	205.6	1.3	15.8	2.4	5.1
Manufacture of coke, refined petroleum products	5.60	1006.5	3.3	357.1	0.0	14.6
Manufacture of chemicals and chemical products	4.78	255.9	7.8	22.0	1.1	27.7
Manufacture of rubber and plastics products	1.24	211.1	0.3	4.0	0.9	1.9
Manufacture of other non-metallic mineral products	3.02	175.0	0.5	3.9	0.0	1.8
Manufacture of basic metals	6.84	252.3	0.9	10.7	9.9	31.6
Manufacture of fabricated metal products, except machinery and equipment	0.73	214.8	0.8	2.0	2.2	3.3
Manufacture of machinery for mining, quarrying and construction	0.24	201.7	0.0	7.3	0.0	7.1
Manufacture of radio, television and communication equipment and apparatus	0.41	93.6	0.0	-3.7	-0.5	-5.2
Manufacture of medical, precision and optical instruments, watches and clocks	0.10	169.7	5.9	1.4	-1.8	-1.7
Manufacture of motor vehicles	9.17	135.8	0.6	2.6	0.0	4.0
Manufacture of other transport equipment	0.30	155.6	2.0	23.2	1.1	6.7
4- Hotels and Restaurants	0.88	292.9	1.9	14.7	1.8	19.4
Hotels and other provision of short-stay accommodation	0.26	323.3	2.5	10.0	3.0	24.5
Restaurants and canteens	0.62	280.0	1.6	17.1	1.2	17.0
5- Transport, Storage and Communications	21.04	183.9	0.2	11.3	0.1	6.9
Land transport	17.57	194.7	0.2	11.7	0.5	8.3
Air transport	1.03	186.5	1.6	21.1	-7.8	-7.9
Post and telecommunications	2.42	104.7	0.0	0.2	0.1	0.7
6- Education	2.43	262.5	0.4	12.0	0.1	14.9
7- Health and Social Work	3.95	322.0	0.9	16.2	3.2	26.7
8- Other Community, Social and Personal Service Activities	1.66	361.7	1.7	21.1	1.7	22.2
Special Groups:						
1- Agriculture, Hunting, Forestry and Fishing	21.98	243.7	0.8	16.2	1.0	6.4
2- Manufacturing	48.06	310.6	4.1	67.9	2.3	13.2
3- Services	29.96	221.6	0.6	13.2	0.9	12.6

Table 2
Producer Price Index in Iran
General and Major Groups Index Numbers
(1383=100)

Description Period	General Index	Major Groups								Special Groups		
		Agriculture, Hunting and Forestry	Fishing	Manufacturing	Hotels and Restaurants	Transport, Storage and Communications	Education	Health and Social Work	Other Community, Social and Personal Service Activities	Agriculture, Hunting, Forestry and Fishing	Manufacturing	Services
1376	34.7	33.5	29.9	40.3	29.8	32.8	24.4	28.5	28.0	33.4	40.1	29.0
1377	41.2	41.1	38.3	47.1	37.4	37.8	26.9	35.0	33.0	41.0	47.2	34.0
1378	50.6	51.1	45.6	58.7	46.7	45.3	32.2	43.8	39.7	51.0	58.7	40.5
1379	58.8	60.3	57.1	67.9	55.1	49.9	41.2	52.4	47.8	60.2	67.8	46.9
1380	65.3	65.3	63.4	71.4	62.5	61.8	54.7	60.9	60.5	65.2	71.4	57.8
1381	74.0	73.2	78.0	78.8	73.4	73.2	67.3	71.6	67.7	73.3	78.5	69.0
1382	85.6	84.8	81.6	87.2	86.2	87.6	81.4	84.2	84.7	84.8	87.1	84.3
1383	100.0	100.0	100.0	100.0	100.0	100.0	100.0	100.0	100.0	100.0	100.0	100.0
1384	108.8	103.2	115.7	108.2	112.1	111.9	118.7	118.6	115.1	103.6	108.2	113.5
1385	121.4	116.6	127.3	120.5	125.3	121.5	143.4	136.9	132.6	116.9	120.5	126.0
1386	139.5	141.2	142.4	136.3	148.0	136.2	163.5	162.9	158.1	141.2	136.3	143.5
1387	168.6	179.7	173.3	166.7	192.1	149.1	187.5	201.2	209.7	179.5	166.7	163.7
1388	181.1	200.6	203.8	171.7	225.8	158.1	217.4	243.7	260.2	200.7	171.7	181.8
1389	211.2	225.1	238.1	209.5	268.4	169.3	245.2	296.9	315.9	225.5	209.5	203.3
1389												
Ordibehesht	193.6	209.8	210.1	185.0	255.4	165.3	234.3	277.0	298.7	209.8	185.0	195.7
Khordad	193.7	208.9	232.3	184.1	259.1	165.7	234.7	285.3	303.0	209.6	184.1	197.4
Tir	194.9	213.7	249.3	183.8	260.6	165.4	235.4	289.3	306.8	214.7	183.8	198.1
Mordad	199.0	224.8	251.1	187.0	263.4	165.5	235.7	293.1	309.3	225.5	187.0	198.9
Shahrivar	200.0	220.6	238.2	190.6	265.8	165.6	236.7	296.5	311.7	221.2	190.6	199.7
Mehr	203.8	229.5	239.3	192.7	270.3	167.1	243.9	300.7	318.6	229.8	192.7	202.4
Aban	206.8	235.5	231.7	194.8	274.7	169.6	248.5	303.1	322.3	235.4	194.8	205.2
Azar	208.4	237.5	250.0	195.8	276.6	169.9	258.3	306.6	324.3	237.9	195.8	206.8
Dey	240.3	234.9	244.4	260.0	279.2	176.3	258.3	310.9	330.0	235.2	260.0	212.3
Bahman	248.9	237.7	251.7	275.7	281.1	177.6	261.2	313.9	331.8	238.1	275.7	213.9
Esfand	253.7	240.7	258.4	283.1	283.8	178.5	261.4	317.6	340.6	241.2	283.1	215.7
1390												
Farvardin	262.5	241.1	262.6	298.3	287.5	183.5	261.5	319.1	355.7	241.7	298.3	220.3
Ordibehesht	269.2	242.6	283.4	310.6	292.9	183.9	262.5	322.0	361.7	243.7	310.6	221.6