



Central Bank of the Islamic Republic of Iran
General Directorate of Economic Statistics

Producer Price Index in Iran

Tir 1390

(June 22 - July 22, 2011)

(1383 = 100)

Economic Statistics

Department

www.cbi.ir

Mordad 1390

(August 2011)

IN THE NAME OF GOD

Summary Results of the Producer Price Index in Iran

Tir 1390

(1383 = 100)

increase



no change or virtually unchanged



decrease



Groups	Percent change compared to			
	previous month		similar month of the previous year	
General Index	0.9		40.7	
Major Groups:				
1- Agriculture, Hunting and Forestry	0.4		13.6	
2- Fishing	4.0		25.4	
3- Manufacturing	1.1		72.7	
4- Hotels and Restaurants	3.7		18.5	
5- Transport, Storage and Communications	1.2		13.1	
6- Education	0.3		12.1	
7- Health and Social Work	2.3		16.5	
8- Other Community, Social and Personal Service Activities	2.5		22.4	
Special Groups:				
1- Agriculture, Hunting, Forestry and Fishing	0.2		14.0	
2- Manufacturing	1.1		72.7	
3- Services	1.6		14.6	

Producer Price Index in Iran

Tir 1390

(1383 = 100)

The Producer Price Index (PPI) went up 0.9 percent in Tir 1390 following a 1.0 percent rise in Khordad 1390. The index level of 274.3 was 40.7 percent higher than in Tir 1389.

For the first four months of 1390, the Producer Price Index rose 39.4 percent, compared to the similar period in 1389.

The Producer Price Index has advanced 26.5 percent over the last twelve months.

In Tir, the agriculture, hunting and forestry group index went down 0.4 percent.

The advance in the index for Persian Gulf fish principally caused 4.0 percent increase in the group index for fishing.

As a result of rising in the indices for walnut, manufacture of dairy products, manufacture of cubed sugar and sugar, macaroni and pasta, carbonated drink, manufacture of shoes, automobile lubricating oils, refining motor oils, lube cut, tar, urea, detergents (for hand washing), cement, manufacture of basic iron and steel, zinc ingot, cooler, manufacture of wires, telecommunications cable, lamps, manufacture of medical instruments, pickup truck and automobile shock absorber, the manufacturing group index moved up

1.1 percent. In this group, the prices for oilcake, polyester fibers, heavy oil cuts, chemicals products obtained from chemical processes (domestic use), exported paraxylene, exported pentane and low density polyethylene fell.

The advance in the price of hotels and inns mostly caused 3.7 percent increase in the group index for hotels and restaurants.

The transport, storage and communications group index went up 1.2 percent, which was principally due to the rises in the indices for land and air transport.

The education group index and the health and social work group index moved up 0.3 percent and 2.3 percent, respectively.

As a result of rising in the indices for out-of-school lesson in body building and hairdressing and other beauty treatment, the other community, social and personal service activities group index increased 2.5 percent.

Producer Price Index in Iran (1383=100)

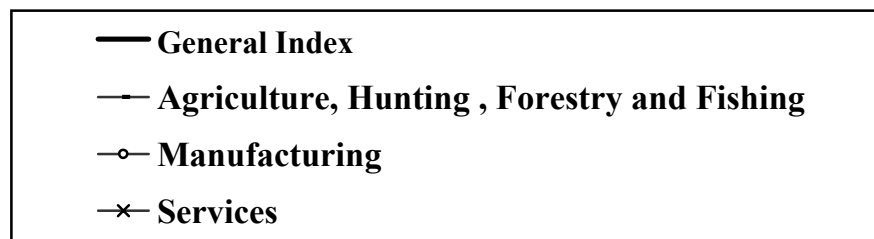
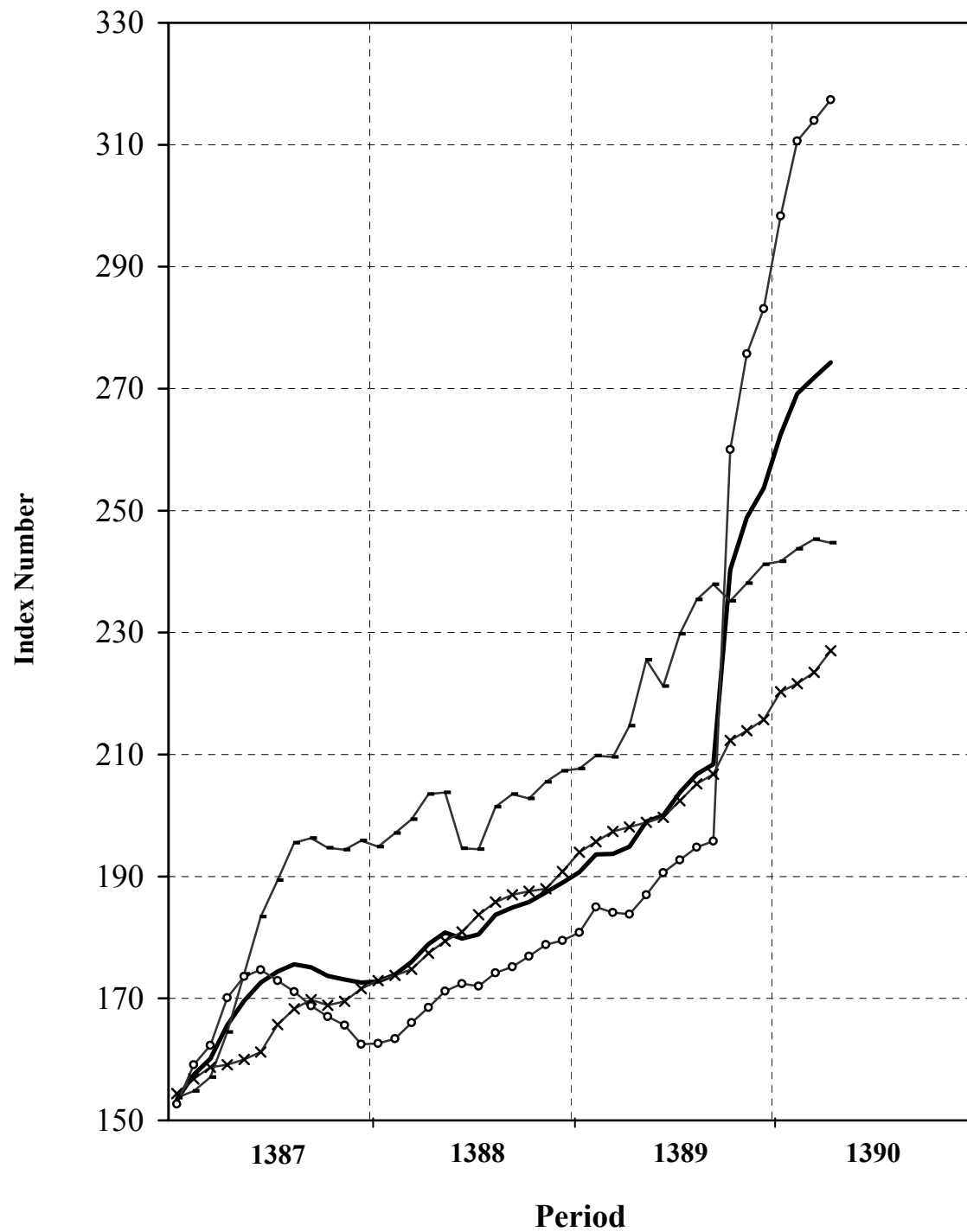


Table 1
Producer Price Index in Iran
Index Numbers and Their Percent Changes
Tir 1390
(1383 = 100)

Description	Base Year Weight	Index Number in Tir 1390	Percent Change			
			Tir 1390 compared to		Tir 1389 compared to	
			previous month	similar month of the previous year	previous month	similar month of the previous year
General Index	100.00	274.3	0.9	40.7	0.6	9.0
Major Groups and Selected Subgroups:						
1-Agriculture, Hunting and Forestry	21.35	242.7	-0.4	13.6	2.3	5.2
Growing of crops; market gardening; horticulture	15.53	246.5	-1.0	14.0	1.3	0.4
Growing of cereals and other crops n.e.c.	7.65	244.2	2.5	18.0	0.3	5.1
Cereals	4.85	225.1	2.2	13.7	-1.0	1.2
Forage plant	1.25	313.3	4.1	30.0	4.8	9.3
Industrial plant	1.18	219.7	0.1	17.6	-0.1	21.3
Pulses	0.37	339.7	5.8	24.6	1.3	2.1
Growing of vegetables, horticultural specialties and nursery products	2.47	234.1	-12.5	7.6	-2.4	-0.6
Patch vegetables	0.94	181.4	-18.2	8.2	-3.3	-13.5
Root vegetables	0.75	250.7	-10.8	12.9	-14.8	25.1
Garden vegetables	0.57	268.2	-12.9	38.5	23.0	-18.9
Leaf vegetables	0.13	228.0	1.4	-24.5	1.6	134.5
Other products	0.09	446.8	0.0	-40.1	0.0	-12.3
Growing of fruit, nuts, beverage and spice crops	5.40	255.4	-0.1	11.6	4.4	-4.7
Half tropical fruits	1.81	309.6	0.0	7.4	1.3	31.0
Fruits with seeds	1.34	197.7	18.1	29.7	17.6	-25.6
Fruits with pits	0.88	123.7	-31.0	-38.3	2.2	8.1
Fresh nuts	0.77	278.6	0.0	54.5	0.0	2.1
Fruits with tiny pits	0.61	380.9	3.1	18.6	5.9	-40.1
Farming of animals	5.82	232.4	1.3	12.3	5.1	21.6
Farming of cattle, sheep and goats	2.16	272.2	0.1	1.7	6.9	47.2
Production of raw milk	1.86	213.1	4.5	11.9	-1.4	3.5
Farming of birds	1.13	168.7	7.6	3.1	19.9	21.4
Other animal farming	0.67	264.8	-7.1	103.8	-4.3	-16.2
2- Fishing	0.63	312.6	4.0	25.4	7.3	22.3
Persian Gulf fish	0.35	326.7	7.0	11.1	11.6	33.1
Caspian Sea fish	0.06	201.2	0.0	17.2	0.0	40.3
Aquaculture	0.22	320.5	0.0	61.2	0.0	0.0
3- Manufacturing	48.06	317.4	1.1	72.7	-0.2	9.1
Manufacture of food products and beverages	5.84	364.9	1.9	89.0	2.1	10.3
Production, processing and preservation of meat, fish, fruit, vegetables, oils and fats	1.83	202.2	1.5	23.1	1.0	2.3
Manufacture of dairy products	0.89	177.2	5.4	7.3	0.0	12.8

Table 1 (continued)

Description	Base Year Weight	Index Number in Tir 1390	Percent Change			
			Tir 1390 compared to		Tir 1389 compared to	
			previous month	similar month of the previous year	previous month	similar month of the previous year
Manufacture of grain mill products, starches and starch products, and prepared animal feeds	1.02	711.5	-1.4	215.7	-6.4	-7.4
Manufacture of other food products	1.51	486.3	2.8	118.4	11.9	35.6
Manufacture of beverages	0.59	241.6	12.6	24.9	0.0	12.8
Manufacture of tobacco products	0.15	193.4	1.2	66.7	-0.8	3.2
Manufacture of textiles	1.97	221.7	0.1	17.6	1.1	13.0
Spinning, weaving and finishing of textiles	1.11	201.0	-1.0	32.0	1.5	13.3
Manufacture of other textiles	0.83	249.9	1.4	5.4	0.7	12.8
Manufacture of knitted and crocheted fabrics and articles	0.02	200.5	0.6	10.0	0.6	3.9
Manufacture of wearing apparel; dressing and dyeing of fur	0.08	188.0	0.5	9.0	3.2	8.4
Tanning and dressing of leather; manufacture of luggage, handbags, saddle, harness and footwear	0.19	232.4	3.5	22.5	0.1	5.4
Manufacture of wood and of products of wood and cork, except furniture; manufacture of articles of straw and plaiting materials	0.13	177.7	5.2	13.0	0.3	5.9
Manufacture of paper and paper products	0.54	214.2	1.8	14.1	1.8	13.1
Manufacture of coke, refined petroleum products	5.60	1004.3	-0.4	342.6	1.5	8.9
Manufacture of chemicals and chemical products	4.78	259.1	-0.9	28.1	-2.6	15.5
Manufacture of rubber and plastics products	1.24	212.2	0.0	4.6	0.0	2.1
Manufacture of other non-metallic mineral products	3.02	186.6	6.1	10.7	-0.1	1.4
Manufacture of basic metals	6.84	273.0	4.8	28.8	-2.3	14.8
Manufacture of fabricated metal products, except machinery and equipment	0.73	226.0	1.9	6.6	0.3	6.1
Manufacture of machinery for mining, quarrying and construction	0.24	201.7	0.0	6.3	0.0	8.1
Manufacture of radio, television and communication equipment and apparatus	0.41	93.9	0.8	-6.7	3.5	1.4
Manufacture of medical, precision and optical instruments, watches and clocks	0.10	180.6	6.4	10.9	-2.8	-9.8
Manufacture of motor vehicles	9.17	136.6	0.6	3.3	-0.1	3.8
Manufacture of other transport equipment	0.30	153.5	-1.3	20.8	0.0	7.3
4- Hotels and Restaurants	0.88	308.9	3.7	18.5	0.6	19.0
Hotels and other provision of short-stay accommodation	0.26	354.8	7.8	18.1	0.1	23.7
Restaurants and canteens	0.62	289.6	1.6	18.8	0.9	16.8
5- Transport, Storage and Communications	21.04	187.0	1.2	13.1	-0.2	5.3
Land transport	17.57	196.5	0.7	12.6	-0.2	6.5
Air transport	1.03	210.3	12.8	36.6	-0.1	-8.0
Post and telecommunications	2.42	108.1	0.0	3.2	0.0	0.8
6- Education	2.43	263.9	0.3	12.1	0.3	14.5
7- Health and Social Work	3.95	337.0	2.3	16.5	1.4	27.4
8- Other Community, Social and Personal Service Activities	1.66	375.6	2.5	22.4	1.3	21.6
Special Groups:						
1- Agriculture, Hunting, Forestry and Fishing	21.98	244.7	-0.2	14.0	2.4	5.7
2- Manufacturing	48.06	317.4	1.1	72.7	-0.2	9.1
3- Services	29.96	227.0	1.6	14.6	0.4	11.7

Table 2
Producer Price Index in Iran
General and Major Groups Index Numbers
(1383=100)

Description Period	General Index	Major Groups								Special Groups		
		Agriculture, Hunting and Forestry	Fishing	Manufacturing	Hotels and Restaurants	Transport, Storage and Communications	Education	Health and Social Work	Other Community, Social and Personal Service Activities	Agriculture, Hunting, Forestry and Fishing	Manufacturing	Services
1376	34.7	33.5	29.9	40.3	29.8	32.8	24.4	28.5	28.0	33.4	40.1	29.0
1377	41.2	41.1	38.3	47.1	37.4	37.8	26.9	35.0	33.0	41.0	47.2	34.0
1378	50.6	51.1	45.6	58.7	46.7	45.3	32.2	43.8	39.7	51.0	58.7	40.5
1379	58.8	60.3	57.1	67.9	55.1	49.9	41.2	52.4	47.8	60.2	67.8	46.9
1380	65.3	65.3	63.4	71.4	62.5	61.8	54.7	60.9	60.5	65.2	71.4	57.8
1381	74.0	73.2	78.0	78.8	73.4	73.2	67.3	71.6	67.7	73.3	78.5	69.0
1382	85.6	84.8	81.6	87.2	86.2	87.6	81.4	84.2	84.7	84.8	87.1	84.3
1383	100.0	100.0	100.0	100.0	100.0	100.0	100.0	100.0	100.0	100.0	100.0	100.0
1384	108.8	103.2	115.7	108.2	112.1	111.9	118.7	118.6	115.1	103.6	108.2	113.5
1385	121.4	116.6	127.3	120.5	125.3	121.5	143.4	136.9	132.6	116.9	120.5	126.0
1386	139.5	141.2	142.4	136.3	148.0	136.2	163.5	162.9	158.1	141.2	136.3	143.5
1387	168.6	179.7	173.3	166.7	192.1	149.1	187.5	201.2	209.7	179.5	166.7	163.7
1388	181.1	200.6	203.8	171.7	225.8	158.1	217.4	243.7	260.2	200.7	171.7	181.8
1389	211.2	225.1	238.1	209.5	268.4	169.3	245.2	296.9	315.9	225.5	209.5	203.3
1389												
Tir	194.9	213.7	249.3	183.8	260.6	165.4	235.4	289.3	306.8	214.7	183.8	198.1
Mordad	199.0	224.8	251.1	187.0	263.4	165.5	235.7	293.1	309.3	225.5	187.0	198.9
Shahrivar	200.0	220.6	238.2	190.6	265.8	165.6	236.7	296.5	311.7	221.2	190.6	199.7
Mehr	203.8	229.5	239.3	192.7	270.3	167.1	243.9	300.7	318.6	229.8	192.7	202.4
Aban	206.8	235.5	231.7	194.8	274.7	169.6	248.5	303.1	322.3	235.4	194.8	205.2
Azar	208.4	237.5	250.0	195.8	276.6	169.9	258.3	306.6	324.3	237.9	195.8	206.8
Dey	240.3	234.9	244.4	260.0	279.2	176.3	258.3	310.9	330.0	235.2	260.0	212.3
Bahman	248.9	237.7	251.7	275.7	281.1	177.6	261.2	313.9	331.8	238.1	275.7	213.9
Esfand	253.7	240.7	258.4	283.1	283.8	178.5	261.4	317.6	340.6	241.2	283.1	215.7
1390												
Farvardin	262.5	241.1	262.6	298.3	287.5	183.5	261.5	319.1	355.7	241.7	298.3	220.3
Ordibehesht	269.2	242.6	283.4	310.6	292.9	183.9	262.5	322.0	361.7	243.7	310.6	221.6
Khordad	271.8	243.6	300.7	314.0	298.0	184.7	263.0	329.3	366.4	245.3	314.0	223.5
Tir	274.3	242.7	312.6	317.4	308.9	187.0	263.9	337.0	375.6	244.7	317.4	227.0