



Central Bank of the Islamic Republic of Iran
General Directorate of Economic Statistics

Producer Price Index in Iran

Mehr 1390

(September 23 - October 22, 2011)

(1383 = 100)

Economic Statistics

Department

www.cbi.ir

Aban 1390

(November 2011)

IN THE NAME OF GOD

Summary Results of the Producer Price Index in Iran

Mehr 1390

(1383 = 100)

increase



no change or virtually unchanged



decrease



| Groups | Percent change compared to | | | |
|--|----------------------------|--|------------------------------------|--|
| | previous month | | similar month of the previous year | |
| General Index | 1.5 | | 39.9 | |
| Major Groups: | | | | |
| 1- Agriculture, Hunting and Forestry | 2.2 | | 15.4 | |
| 2- Fishing | 2.4 | | 33.2 | |
| 3- Manufacturing | 0.9 | | 68.1 | |
| 4- Hotels and Restaurants | 1.5 | | 19.9 | |
| 5- Transport, Storage and Communications | 2.1 | | 15.0 | |
| 6- Education | 3.1 | | 12.1 | |
| 7- Health and Social Work | 1.0 | | 20.6 | |
| 8- Other Community, Social and Personal Service Activities | 2.3 | | 23.7 | |
| Special Groups: | | | | |
| 1- Agriculture, Hunting, Forestry and Fishing | 2.3 | | 16.0 | |
| 2- Manufacturing | 0.9 | | 68.1 | |
| 3- Services | 2.0 | | 16.7 | |

Producer Price Index in Iran

Mehr1390

(1383 = 100)

The Producer Price Index (PPI) went up 1.5 percent in Mehr 1390 following a 1.0 percent rise in Shahrivar 1390. The index level of 285.1 was 39.9 percent higher than in Mehr 1389.

For the first seven months of 1390, the Producer Price Index increased 39.7 percent, compared to the similar period in 1389.

The Producer Price Index has advanced 33.5 percent over the last twelve months.

In Mehr, the agriculture, hunting and forestry group index went up 2.2 percent, which was mainly attributed to the rises in the indices for barley produced by irrigated farming, rice long- grain, sugar beet, potato, growing of fruit, nuts, beverage and spice crops, production of raw milk and egg. In this group, the prices for mixed rice, patch vegetables, fresh nuts and farming of cattle, sheep and goats moved down.

The advance in the index for aquaculture principally caused 2.4 percent increase in the group index for fishing. In this group, the price of Persian Gulf fish fell.

The manufacturing group index rose 0.9 percent.

The hotels and restaurants group index went up 1.5 percent, which was principally due to the increase in the index for restaurants and canteens.

The 2.1 percent rise in the group index of transport, storage and communications was mostly attributed to the increase in the index for freight transport by road.

The education group index went up 3.1 percent which was mainly due to the rise in the index for private schools tuition fees.

The advance in the index for dental services principally caused 1.0 percent increase in the group index for health and social work.

As a result of rising in the indices for hairdressing and other beauty treatment and cost of funeral and related activities, the other community, social and personal service activities group index moved up 2.3 percent.

Producer Price Index in Iran (1383=100)

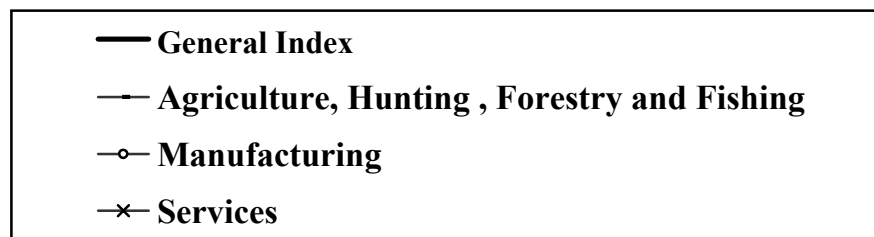
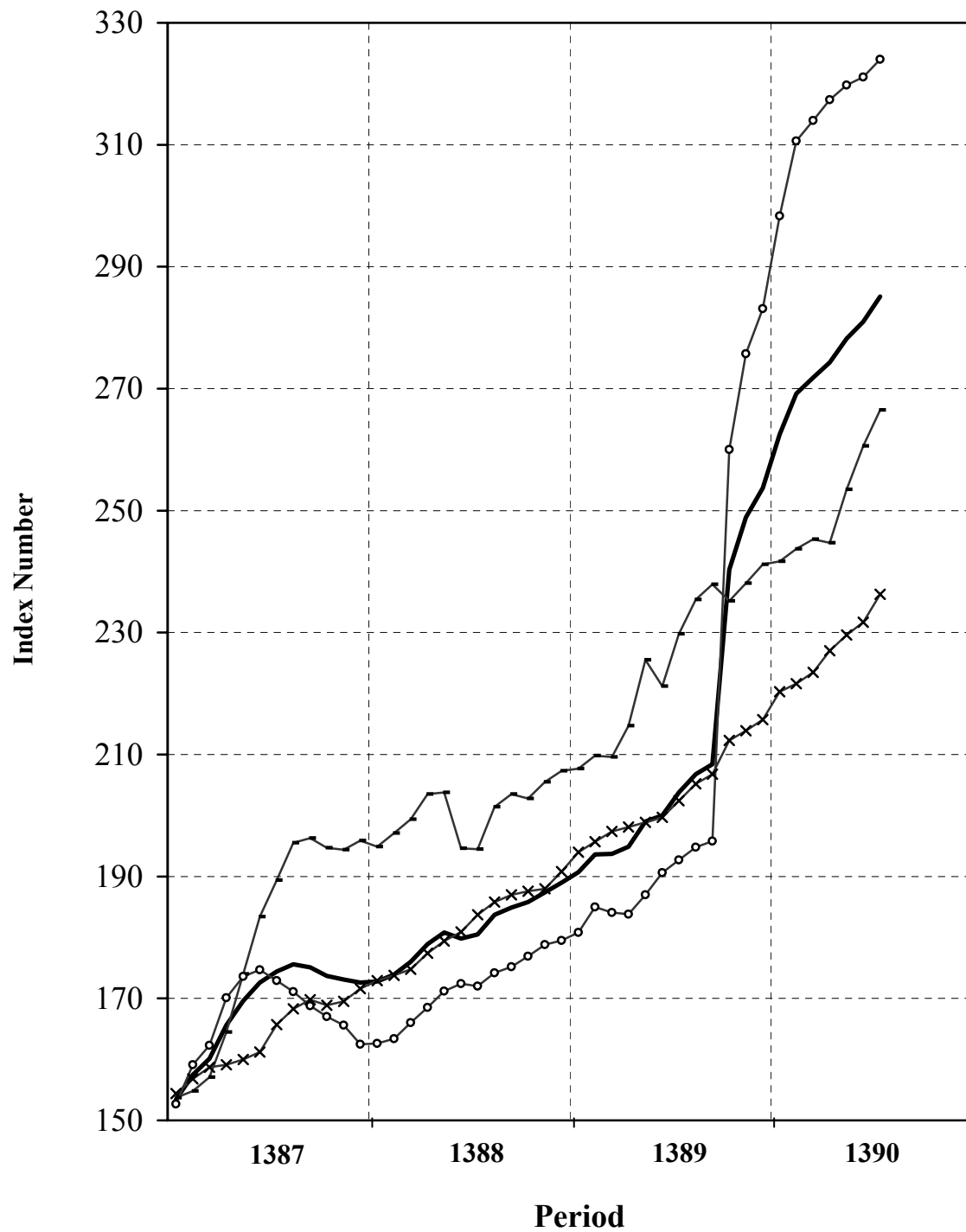


Table 1
Producer Price Index in Iran
Index Numbers and Their Percent Changes
Mehr 1390
(1383 = 100)

| Description | Base Year Weight | Index Number in Mehr 1390 | Percent Change | | | |
|---|------------------------|------------------------------------|--------------------------|---------------------------------------|--------------------------|---------------------------------------|
| | | | Mehr 1390 compared to | | Mehr 1389 compared to | |
| | | | previous month | similar month of the previous year | previous month | similar month of the previous year |
| General Index | 100.00 | 285.1 | 1.5 | 39.9 | 1.9 | 12.9 |
| Major Groups and Selected Subgroups: | | | | | | |
| 1-Agriculture, Hunting and Forestry | 21.35 | 264.9 | 2.2 | 15.4 | 4.0 | 18.1 |
| Growing of crops; market gardening; horticulture | 15.53 | 269.0 | 1.7 | 14.9 | 5.2 | 17.8 |
| Growing of cereals and other crops n.e.c. | 7.65 | 271.1 | -0.2 | 20.9 | 3.7 | 10.6 |
| Cereals | 4.85 | 249.1 | 0.6 | 17.6 | 0.6 | 8.0 |
| Forage plant | 1.25 | 347.4 | -5.3 | 31.4 | 7.3 | 6.9 |
| Industrial plant | 1.18 | 237.0 | 4.7 | 14.2 | 10.8 | 26.8 |
| Pulses | 0.37 | 411.0 | 0.5 | 35.8 | 7.8 | 14.3 |
| Growing of vegetables, horticultural specialties and nursery products | 2.47 | 262.2 | 1.3 | -2.3 | 12.6 | 51.1 |
| Patch vegetables | 0.94 | 234.4 | -2.9 | 10.3 | 11.7 | 64.7 |
| Root vegetables | 0.75 | 243.4 | 10.3 | -9.7 | 22.1 | 40.7 |
| Garden vegetables | 0.57 | 310.8 | -1.4 | 11.9 | 12.9 | 91.7 |
| Leaf vegetables | 0.13 | 234.7 | 1.5 | -22.8 | -2.8 | 118.7 |
| Other products | 0.09 | 446.8 | 0.0 | -40.1 | 0.0 | -12.3 |
| Growing of fruit, nuts, beverage and spice crops | 5.40 | 269.2 | 4.7 | 15.6 | 3.6 | 14.7 |
| Half tropical fruits | 1.81 | 327.7 | 0.5 | 17.3 | -4.1 | 10.1 |
| Fruits with seeds | 1.34 | 226.1 | 11.7 | 49.8 | -2.8 | 11.4 |
| Fruits with pits | 0.88 | 138.1 | 2.1 | -24.4 | 3.2 | -5.3 |
| Fresh nuts | 0.77 | 248.6 | -10.4 | -0.2 | 28.2 | 48.9 |
| Fruits with tiny pits | 0.61 | 404.3 | 25.6 | 24.4 | 13.6 | 25.8 |
| Farming of animals | 5.82 | 254.0 | 3.8 | 17.1 | 0.8 | 18.9 |
| Farming of cattle, sheep and goats | 2.16 | 265.3 | -2.4 | -3.8 | -1.2 | 31.8 |
| Production of raw milk | 1.86 | 249.8 | 3.0 | 29.6 | 0.9 | 5.1 |
| Farming of birds | 1.13 | 147.9 | 1.6 | -4.3 | -5.4 | 22.1 |
| Other animal farming | 0.67 | 408.4 | 23.6 | 104.3 | 22.8 | 6.1 |
| 2- Fishing | 0.63 | 318.7 | 2.4 | 33.2 | 0.5 | 19.2 |
| Persian Gulf fish | 0.35 | 336.5 | -4.7 | 24.1 | -0.4 | 34.9 |
| Caspian Sea fish | 0.06 | 194.0 | -3.6 | 1.2 | 10.2 | -6.7 |
| Aquaculture | 0.22 | 324.7 | 18.2 | 61.1 | 0.0 | 1.4 |
| 3- Manufacturing | 48.06 | 324.0 | 0.9 | 68.1 | 1.1 | 12.0 |
| Manufacture of food products and beverages | 5.84 | 365.5 | -0.5 | 78.3 | 0.2 | 16.9 |
| Production, processing and preservation of meat, fish, fruit, vegetables, oils and fats | 1.83 | 213.2 | -0.2 | 14.3 | -0.2 | 20.5 |
| Manufacture of dairy products | 0.89 | 193.6 | 4.8 | 17.7 | 0.3 | 10.7 |

Table 1 (continued)

| Description | Base Year Weight | Index Number in Mehr 1390 | Percent Change | | | |
|---|------------------------|------------------------------------|--------------------------|---------------------------------------|--------------------------|---------------------------------------|
| | | | Mehr 1390 compared to | | Mehr 1389 compared to | |
| | | | previous month | similar month of the previous year | previous month | similar month of the previous year |
| Manufacture of grain mill products, starches and starch products, and prepared animal feeds | 1.02 | 704.7 | -0.1 | 193.1 | -1.6 | -0.5 |
| Manufacture of other food products | 1.51 | 475.3 | -1.2 | 108.8 | 2.0 | 31.6 |
| Manufacture of beverages | 0.59 | 229.4 | -5.0 | 12.3 | 0.0 | 19.9 |
| Manufacture of tobacco products | 0.15 | 197.4 | 0.9 | 64.1 | 0.8 | 6.6 |
| Manufacture of textiles | 1.97 | 227.5 | 1.4 | 17.0 | 2.0 | 13.8 |
| Spinning, weaving and finishing of textiles | 1.11 | 210.5 | 2.6 | 31.4 | 3.6 | 14.0 |
| Manufacture of other textiles | 0.83 | 250.7 | 0.2 | 4.3 | 0.8 | 13.9 |
| Manufacture of knitted and crocheted fabrics and articles | 0.02 | 205.2 | 0.9 | 11.2 | 0.5 | 3.9 |
| Manufacture of wearing apparel; dressing and dyeing of fur | 0.08 | 199.4 | 0.1 | 12.5 | 0.3 | 11.0 |
| Tanning and dressing of leather; manufacture of luggage, handbags, saddle, harness and footwear | 0.19 | 243.9 | 1.3 | 23.4 | 1.2 | 9.4 |
| Manufacture of wood and of products of wood and cork, except furniture; manufacture of articles of straw and plaiting materials | 0.13 | 184.6 | -0.8 | 14.3 | 1.6 | 7.8 |
| Manufacture of paper and paper products | 0.54 | 223.5 | 1.0 | 14.6 | 3.1 | 17.4 |
| Manufacture of coke, refined petroleum products | 5.60 | 1019.8 | 1.9 | 346.3 | 0.5 | 5.3 |
| Manufacture of chemicals and chemical products | 4.78 | 264.2 | 0.8 | 22.8 | 3.2 | 20.0 |
| Manufacture of rubber and plastics products | 1.24 | 228.1 | 0.1 | 7.5 | 1.8 | 6.7 |
| Manufacture of other non-metallic mineral products | 3.02 | 194.9 | -0.3 | 14.6 | 0.1 | 2.4 |
| Manufacture of basic metals | 6.84 | 288.0 | 1.3 | 19.2 | 1.3 | 23.1 |
| Manufacture of fabricated metal products, except machinery and equipment | 0.73 | 229.4 | 0.7 | 6.5 | 1.0 | 8.4 |
| Manufacture of machinery for mining, quarrying and construction | 0.24 | 236.7 | 0.7 | 17.4 | 0.7 | 13.6 |
| Manufacture of radio, television and communication equipment and apparatus | 0.41 | 79.1 | 0.0 | -20.5 | -1.1 | 1.8 |
| Manufacture of medical, precision and optical instruments, watches and clocks | 0.10 | 179.9 | 0.0 | 9.4 | -0.1 | -5.0 |
| Manufacture of motor vehicles | 9.17 | 139.4 | 0.2 | 4.3 | 0.0 | 4.1 |
| Manufacture of other transport equipment | 0.30 | 163.1 | 6.0 | 27.2 | 0.0 | 8.8 |
| 4- Hotels and Restaurants | 0.88 | 324.0 | 1.5 | 19.9 | 1.7 | 18.8 |
| Hotels and other provision of short-stay accommodation | 0.26 | 371.5 | 0.4 | 21.4 | 0.6 | 22.6 |
| Restaurants and canteens | 0.62 | 303.9 | 2.1 | 19.0 | 2.3 | 17.0 |
| 5- Transport, Storage and Communications | 21.04 | 192.1 | 2.1 | 15.0 | 0.9 | 4.9 |
| Land transport | 17.57 | 202.6 | 2.4 | 15.6 | 0.3 | 5.3 |
| Air transport | 1.03 | 210.3 | 0.0 | 20.2 | 13.6 | 4.5 |
| Post and telecommunications | 2.42 | 108.1 | 0.0 | 3.2 | 0.0 | 0.7 |
| 6- Education | 2.43 | 273.4 | 3.1 | 12.1 | 3.0 | 14.5 |
| 7- Health and Social Work | 3.95 | 362.7 | 1.0 | 20.6 | 1.4 | 19.2 |
| 8- Other Community, Social and Personal Service Activities | 1.66 | 394.2 | 2.3 | 23.7 | 2.2 | 20.7 |
| Special Groups: | | | | | | |
| 1- Agriculture, Hunting, Forestry and Fishing | 21.98 | 266.5 | 2.3 | 16.0 | 3.9 | 18.1 |
| 2- Manufacturing | 48.06 | 324.0 | 0.9 | 68.1 | 1.1 | 12.0 |
| 3- Services | 29.96 | 236.3 | 2.0 | 16.7 | 1.4 | 10.2 |

Table 2
Producer Price Index in Iran
General and Major Groups Index Numbers
(1383=100)

| Description Period | General Index | Major Groups | | | | | | | | Special Groups | | |
|-----------------------|------------------|---|---------|---------------|---------------------------|---|-----------|---------------------------|---|--|---------------|----------|
| | | Agriculture, Hunting and Forestry | Fishing | Manufacturing | Hotels and Restaurants | Transport, Storage and Communications | Education | Health and Social Work | Other Community, Social and Personal Service Activities | Agriculture, Hunting, Forestry and Fishing | Manufacturing | Services |
| 1376 | 34.7 | 33.5 | 29.9 | 40.3 | 29.8 | 32.8 | 24.4 | 28.5 | 28.0 | 33.4 | 40.1 | 29.0 |
| 1377 | 41.2 | 41.1 | 38.3 | 47.1 | 37.4 | 37.8 | 26.9 | 35.0 | 33.0 | 41.0 | 47.2 | 34.0 |
| 1378 | 50.6 | 51.1 | 45.6 | 58.7 | 46.7 | 45.3 | 32.2 | 43.8 | 39.7 | 51.0 | 58.7 | 40.5 |
| 1379 | 58.8 | 60.3 | 57.1 | 67.9 | 55.1 | 49.9 | 41.2 | 52.4 | 47.8 | 60.2 | 67.8 | 46.9 |
| 1380 | 65.3 | 65.3 | 63.4 | 71.4 | 62.5 | 61.8 | 54.7 | 60.9 | 60.5 | 65.2 | 71.4 | 57.8 |
| 1381 | 74.0 | 73.2 | 78.0 | 78.8 | 73.4 | 73.2 | 67.3 | 71.6 | 67.7 | 73.3 | 78.5 | 69.0 |
| 1382 | 85.6 | 84.8 | 81.6 | 87.2 | 86.2 | 87.6 | 81.4 | 84.2 | 84.7 | 84.8 | 87.1 | 84.3 |
| 1383 | 100.0 | 100.0 | 100.0 | 100.0 | 100.0 | 100.0 | 100.0 | 100.0 | 100.0 | 100.0 | 100.0 | 100.0 |
| 1384 | 108.8 | 103.2 | 115.7 | 108.2 | 112.1 | 111.9 | 118.7 | 118.6 | 115.1 | 103.6 | 108.2 | 113.5 |
| 1385 | 121.4 | 116.6 | 127.3 | 120.5 | 125.3 | 121.5 | 143.4 | 136.9 | 132.6 | 116.9 | 120.5 | 126.0 |
| 1386 | 139.5 | 141.2 | 142.4 | 136.3 | 148.0 | 136.2 | 163.5 | 162.9 | 158.1 | 141.2 | 136.3 | 143.5 |
| 1387 | 168.6 | 179.7 | 173.3 | 166.7 | 192.1 | 149.1 | 187.5 | 201.2 | 209.7 | 179.5 | 166.7 | 163.7 |
| 1388 | 181.1 | 200.6 | 203.8 | 171.7 | 225.8 | 158.1 | 217.4 | 243.7 | 260.2 | 200.7 | 171.7 | 181.8 |
| 1389 | 211.2 | 225.1 | 238.1 | 209.5 | 268.4 | 169.3 | 245.2 | 296.9 | 315.9 | 225.5 | 209.5 | 203.3 |
| 1389 | | | | | | | | | | | | |
| Mehr | 203.8 | 229.5 | 239.3 | 192.7 | 270.3 | 167.1 | 243.9 | 300.7 | 318.6 | 229.8 | 192.7 | 202.4 |
| Aban | 206.8 | 235.5 | 231.7 | 194.8 | 274.7 | 169.6 | 248.5 | 303.1 | 322.3 | 235.4 | 194.8 | 205.2 |
| Azar | 208.4 | 237.5 | 250.0 | 195.8 | 276.6 | 169.9 | 258.3 | 306.6 | 324.3 | 237.9 | 195.8 | 206.8 |
| Dey | 240.3 | 234.9 | 244.4 | 260.0 | 279.2 | 176.3 | 258.3 | 310.9 | 330.0 | 235.2 | 260.0 | 212.3 |
| Bahman | 248.9 | 237.7 | 251.7 | 275.7 | 281.1 | 177.6 | 261.2 | 313.9 | 331.8 | 238.1 | 275.7 | 213.9 |
| Esfand | 253.7 | 240.7 | 258.4 | 283.1 | 283.8 | 178.5 | 261.4 | 317.6 | 340.6 | 241.2 | 283.1 | 215.7 |
| 1390 | | | | | | | | | | | | |
| Farvardin | 262.5 | 241.1 | 262.6 | 298.3 | 287.5 | 183.5 | 261.5 | 319.1 | 355.7 | 241.7 | 298.3 | 220.3 |
| Ordibehesht | 269.2 | 242.6 | 283.4 | 310.6 | 292.9 | 183.9 | 262.5 | 322.0 | 361.7 | 243.7 | 310.6 | 221.6 |
| Khordad | 271.8 | 243.6 | 300.7 | 314.0 | 298.0 | 184.7 | 263.0 | 329.3 | 366.4 | 245.3 | 314.0 | 223.5 |
| Tir | 274.3 | 242.7 | 312.6 | 317.4 | 308.9 | 187.0 | 263.9 | 337.0 | 375.6 | 244.7 | 317.4 | 227.0 |
| Mordad | 278.2 | 252.2 | 296.0 | 319.8 | 314.4 | 187.6 | 264.6 | 349.9 | 380.6 | 253.5 | 319.8 | 229.6 |
| Shahrivar | 281.0 | 259.1 | 311.3 | 321.1 | 319.1 | 188.1 | 265.3 | 359.2 | 385.4 | 260.6 | 321.1 | 231.7 |
| Mehr | 285.1 | 264.9 | 318.7 | 324.0 | 324.0 | 192.1 | 273.4 | 362.7 | 394.2 | 266.5 | 324.0 | 236.3 |