



**Central Bank of the Islamic Republic of Iran**  
**General Directorate of Economic Statistics**

**Producer Price Index in Iran**

**Aban 1390**

(October 23 - November 21, 2011)

(1383 = 100)

**Economic Statistics**

**Department**

[www.cbi.ir](http://www.cbi.ir)

**Azar 1390**

**(December 2011)**

***IN THE NAME OF GOD***

**Summary Results of the Producer Price Index in Iran**

Aban 1390

(1383 = 100)

increase



no change or virtually unchanged



decrease



**Percent change compared to**

<b>Groups</b>				
	<b>previous month</b>		<b>similar month of the previous year</b>	
<b>General Index</b>	1.1		39.4	
<b>Major Groups:</b>				
<b>1- Agriculture, Hunting and Forestry</b>	2.0		14.7	
<b>2- Fishing</b>	0.8		36.5	
<b>3- Manufacturing</b>	0.7		67.6	
<b>4- Hotels and Restaurants</b>	1.2		19.4	
<b>5- Transport, Storage and Communications</b>	0.3		13.6	
<b>6- Education</b>	9.4		20.4	
<b>7- Health and Social Work</b>	0.7		20.5	
<b>8- Other Community, Social and Personal Service Activities</b>	0.7		23.2	
<b>Special Groups:</b>				
<b>1- Agriculture, Hunting, Forestry and Fishing</b>	1.8		15.3	
<b>2- Manufacturing</b>	0.7		67.6	
<b>3- Services</b>	1.3		16.7	

## **Producer Price Index in Iran**

**Aban 1390**

**(1383 = 100)**

The Producer Price Index (PPI) went up 1.1 percent in Aban 1390 following a 1.5 percent rise in Mehr 1390. The index level of 288.3 was 39.4 percent higher than in Aban 1389.

For the first eight months of 1390, the Producer Price Index increased 39.7 percent, compared to the similar period in 1389.

The Producer Price Index has advanced 35.7 percent over the last twelve months.

In Aban, the agriculture, hunting and forestry group index went up 2.0 percent, which was mainly attributed to the rises in the indices for corn, pulses, growing of vegetables, horticultural specialties and nursery products, half tropical fruits, fresh walnuts with shell, fruits with tiny pits, farming of cattle, sheep and goats and poultry. In this group, the prices for mixed rice, cotton, fruits with seeds and egg moved down.

The fishing group index fell 0.8 percent.

The manufacturing group index rose 0.7 percent.

The advance in the price of hotels mostly caused 1.2 percent increase in the group index for hotels and restaurants.

The transport, storage and communications group index moved up 0.3 percent.

The education group index increased 9.4 percent which was principally due to the rises in the indices for private school and university tuition fees.

The health and social work group index and the other community, social and personal service activities group index went up 0.7 percent, each.

# **Producer Price Index in Iran (1383=100)**

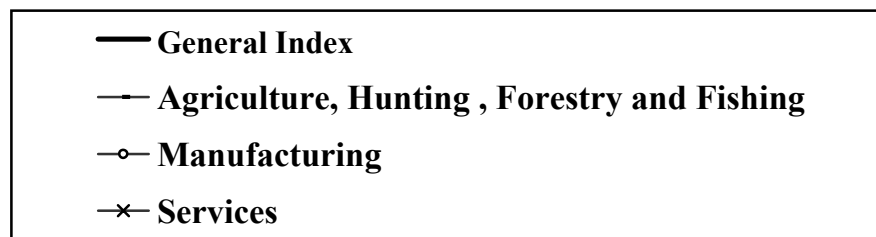
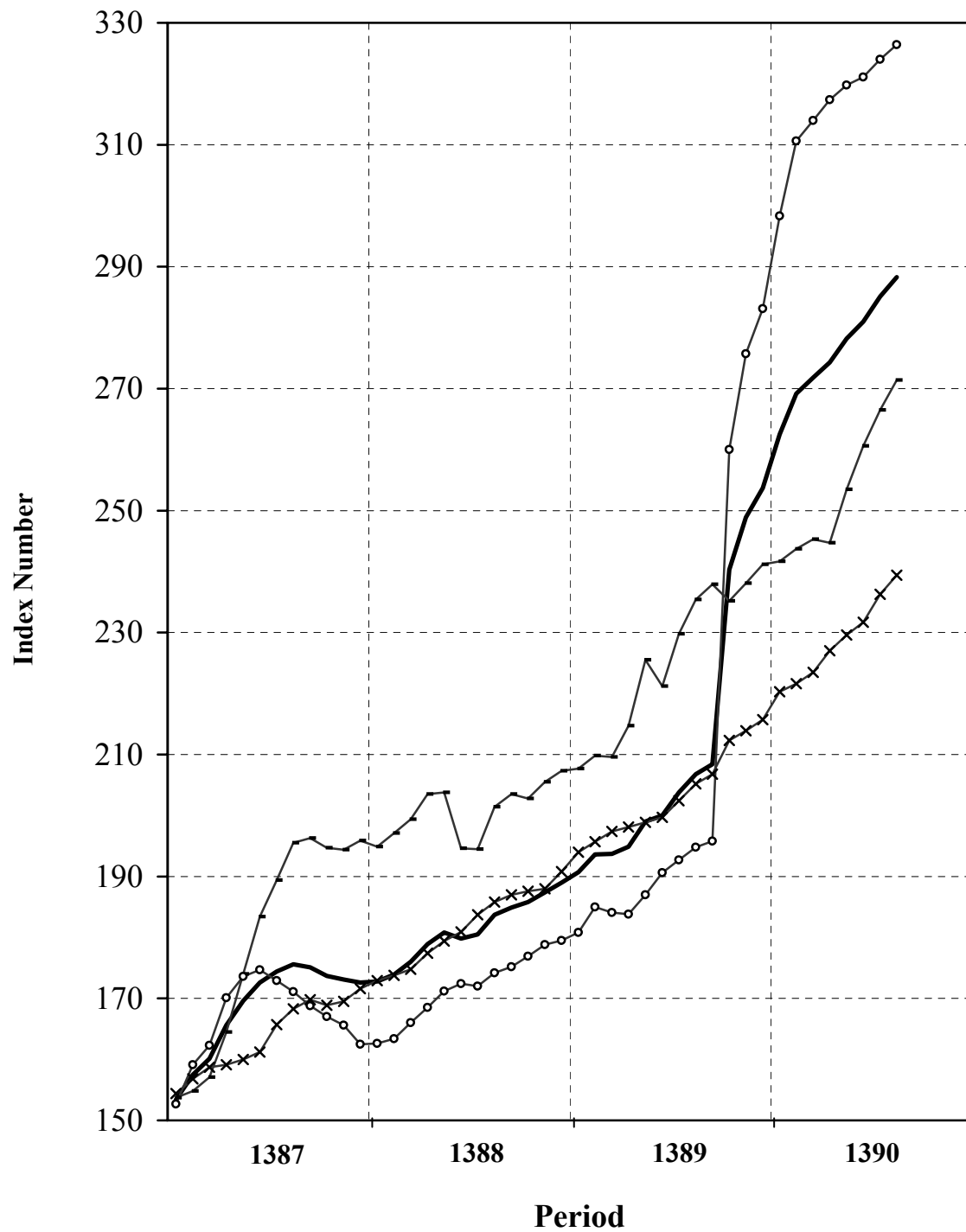


Table 1  
**Producer Price Index in Iran**  
**Index Numbers and Their Percent Changes**  
 Aban 1390  
 (1383 = 100)

Description	Base Year Weight	Index Number in Aban 1390	Percent Change			
			Aban 1390 compared to		Aban 1389 compared to	
			previous month	similar month of the previous year	previous month	similar month of the previous year
<b>General Index</b>	<b>100.00</b>	<b>288.3</b>	<b>1.1</b>	<b>39.4</b>	<b>1.5</b>	<b>12.6</b>
<b>Major Groups and Selected Subgroups:</b>						
<b>1-Agriculture, Hunting and Forestry</b>	<b>21.35</b>	<b>270.1</b>	<b>2.0</b>	<b>14.7</b>	<b>2.6</b>	<b>17.0</b>
Growing of crops; market gardening; horticulture	15.53	276.1	2.6	14.3	3.2	18.5
Growing of cereals and other crops n.e.c.	7.65	272.8	0.6	19.9	1.5	12.4
Cereals	4.85	249.8	0.3	17.3	0.6	9.2
Forage plant	1.25	350.8	1.0	32.5	0.1	6.5
Industrial plant	1.18	235.5	-0.6	6.3	6.7	34.4
Pulses	0.37	429.4	4.5	37.8	3.0	17.8
Growing of vegetables, horticultural specialties and nursery products	2.47	282.9	7.9	2.4	2.9	41.9
Patch vegetables	0.94	263.1	12.2	16.4	6.3	51.5
Root vegetables	0.75	252.8	3.9	-14.0	9.1	35.4
Garden vegetables	0.57	318.1	2.3	5.0	9.0	94.5
Leaf vegetables	0.13	245.9	4.8	-19.3	0.2	114.0
Other products	0.09	580.2	29.9	29.9	-40.1	-45.8
Growing of fruit, nuts, beverage and spice crops	5.40	277.5	3.1	12.9	5.5	16.9
Half tropical fruits	1.81	338.5	3.3	22.6	-1.1	6.9
Fruits with seeds	1.34	220.6	-2.4	34.1	9.0	27.0
Fruits with pits	0.88	135.9	-1.6	-25.6	0.0	-5.0
Fresh nuts	0.77	267.7	7.7	-3.9	11.9	54.5
Fruits with tiny pits	0.61	436.5	8.0	14.3	17.5	24.7
Farming of animals	5.82	254.2	0.1	16.0	1.0	12.9
Farming of cattle, sheep and goats	2.16	270.9	2.1	-5.2	3.6	32.4
Production of raw milk	1.86	257.2	3.0	33.6	-0.1	-0.5
Farming of birds	1.13	162.4	9.8	6.9	-1.7	8.0
Other animal farming	0.67	347.1	-15.0	81.8	-4.5	-11.3
<b>2- Fishing</b>	<b>0.63</b>	<b>316.3</b>	<b>-0.8</b>	<b>36.5</b>	<b>-3.2</b>	<b>11.5</b>
Persian Gulf fish	0.35	312.3	-7.2	27.7	-9.8	19.4
Caspian Sea fish	0.06	244.8	26.2	-8.1	39.0	3.3
Aquaculture	0.22	342.4	5.5	69.9	0.0	1.4
<b>3- Manufacturing</b>	<b>48.06</b>	<b>326.4</b>	<b>0.7</b>	<b>67.6</b>	<b>1.1</b>	<b>11.8</b>
Manufacture of food products and beverages	5.84	367.3	0.5	75.7	2.0	18.1
Production, processing and preservation of meat, fish, fruit, vegetables, oils and fats	1.83	215.1	0.9	9.4	5.4	25.2
Manufacture of dairy products	0.89	195.1	0.8	18.5	0.1	9.5

Table 1 (continued)

Description	Base Year Weight	Index Number in Aban 1390	Percent Change			
			Aban 1390 compared to		Aban 1389 compared to	
			previous month	similar month of the previous year	previous month	similar month of the previous year
Manufacture of grain mill products, starches and starch products, and prepared animal feeds	1.02	703.2	-0.2	182.8	3.5	2.7
Manufacture of other food products	1.51	480.0	1.0	113.2	-1.1	26.2
Manufacture of beverages	0.59	229.4	0.0	12.3	0.0	25.2
Manufacture of tobacco products	0.15	198.8	0.7	64.3	0.6	6.1
Manufacture of textiles	1.97	227.5	0.0	14.7	2.1	15.5
Spinning, weaving and finishing of textiles	1.11	210.6	0.0	26.0	4.4	18.2
Manufacture of other textiles	0.83	250.7	0.0	4.2	0.1	13.4
Manufacture of knitted and crocheted fabrics and articles	0.02	206.9	0.8	11.2	0.8	4.6
Manufacture of wearing apparel; dressing and dyeing of fur	0.08	201.3	1.0	13.5	0.1	7.9
Tanning and dressing of leather; manufacture of luggage, handbags, saddle, harness and footwear	0.19	246.2	0.9	20.9	3.1	12.1
Manufacture of wood and of products of wood and cork, except furniture; manufacture of articles of straw and plaiting materials	0.13	194.8	5.5	20.3	0.2	8.0
Manufacture of paper and paper products	0.54	224.2	0.3	14.2	0.7	17.9
Manufacture of coke, refined petroleum products	5.60	1015.7	-0.4	343.0	0.4	5.2
Manufacture of chemicals and chemical products	4.78	266.4	0.8	21.0	2.3	20.2
Manufacture of rubber and plastics products	1.24	254.3	11.5	22.2	-1.9	4.6
Manufacture of other non-metallic mineral products	3.02	199.5	2.4	17.1	0.2	1.6
Manufacture of basic metals	6.84	292.8	1.7	20.4	0.6	22.5
Manufacture of fabricated metal products, except machinery and equipment	0.73	230.3	0.4	7.8	-0.8	8.0
Manufacture of machinery for mining, quarrying and construction	0.24	236.7	0.0	17.4	0.0	13.6
Manufacture of radio, television and communication equipment and apparatus	0.41	81.6	3.2	-18.5	0.6	2.2
Manufacture of medical, precision and optical instruments, watches and clocks	0.10	180.0	0.1	16.9	-6.3	-11.0
Manufacture of motor vehicles	9.17	142.5	2.2	6.2	0.4	3.6
Manufacture of other transport equipment	0.30	167.4	2.6	5.8	23.4	35.1
<b>4- Hotels and Restaurants</b>	<b>0.88</b>	<b>327.9</b>	<b>1.2</b>	<b>19.4</b>	<b>1.6</b>	<b>19.4</b>
Hotels and other provision of short-stay accommodation	0.26	376.9	1.5	21.7	1.2	23.9
Restaurants and canteens	0.62	307.2	1.1	18.2	1.8	17.2
<b>5- Transport, Storage and Communications</b>	<b>21.04</b>	<b>192.7</b>	<b>0.3</b>	<b>13.6</b>	<b>1.5</b>	<b>6.3</b>
Land transport	17.57	203.0	0.2	14.2	1.4	6.7
Air transport	1.03	217.1	3.2	18.3	4.9	9.9
Post and telecommunications	2.42	108.1	0.0	3.2	0.0	0.5
<b>6- Education</b>	<b>2.43</b>	<b>299.2</b>	<b>9.4</b>	<b>20.4</b>	<b>1.9</b>	<b>8.2</b>
<b>7- Health and Social Work</b>	<b>3.95</b>	<b>365.3</b>	<b>0.7</b>	<b>20.5</b>	<b>0.8</b>	<b>19.0</b>
<b>8- Other Community, Social and Personal Service Activities</b>	<b>1.66</b>	<b>397.1</b>	<b>0.7</b>	<b>23.2</b>	<b>1.2</b>	<b>20.8</b>
<b>Special Groups:</b>						
<b>1- Agriculture, Hunting, Forestry and Fishing</b>	<b>21.98</b>	<b>271.4</b>	<b>1.8</b>	<b>15.3</b>	<b>2.4</b>	<b>16.9</b>
<b>2- Manufacturing</b>	<b>48.06</b>	<b>326.4</b>	<b>0.7</b>	<b>67.6</b>	<b>1.1</b>	<b>11.8</b>
<b>3- Services</b>	<b>29.96</b>	<b>239.4</b>	<b>1.3</b>	<b>16.7</b>	<b>1.4</b>	<b>10.4</b>

**Table 2**  
**Producer Price Index in Iran**  
General and Major Groups Index Numbers  
(1383=100)

Description  Period	General Index	Major Groups								Special Groups		
		Agriculture, Hunting and Forestry	Fishing	Manufacturing	Hotels and Restaurants	Transport, Storage and Communications	Education	Health and Social Work	Other Community, Social and Personal Service Activities	Agriculture, Hunting, Forestry and Fishing	Manufacturing	Services
1376	34.7	33.5	29.9	40.3	29.8	32.8	24.4	28.5	28.0	33.4	40.1	29.0
1377	41.2	41.1	38.3	47.1	37.4	37.8	26.9	35.0	33.0	41.0	47.2	34.0
1378	50.6	51.1	45.6	58.7	46.7	45.3	32.2	43.8	39.7	51.0	58.7	40.5
1379	58.8	60.3	57.1	67.9	55.1	49.9	41.2	52.4	47.8	60.2	67.8	46.9
1380	65.3	65.3	63.4	71.4	62.5	61.8	54.7	60.9	60.5	65.2	71.4	57.8
1381	74.0	73.2	78.0	78.8	73.4	73.2	67.3	71.6	67.7	73.3	78.5	69.0
1382	85.6	84.8	81.6	87.2	86.2	87.6	81.4	84.2	84.7	84.8	87.1	84.3
1383	100.0	100.0	100.0	100.0	100.0	100.0	100.0	100.0	100.0	100.0	100.0	100.0
1384	108.8	103.2	115.7	108.2	112.1	111.9	118.7	118.6	115.1	103.6	108.2	113.5
1385	121.4	116.6	127.3	120.5	125.3	121.5	143.4	136.9	132.6	116.9	120.5	126.0
1386	139.5	141.2	142.4	136.3	148.0	136.2	163.5	162.9	158.1	141.2	136.3	143.5
1387	168.6	179.7	173.3	166.7	192.1	149.1	187.5	201.2	209.7	179.5	166.7	163.7
1388	181.1	200.6	203.8	171.7	225.8	158.1	217.4	243.7	260.2	200.7	171.7	181.8
1389	211.2	225.1	238.1	209.5	268.4	169.3	245.2	296.9	315.9	225.5	209.5	203.3
<b>1389</b>												
Aban	206.8	235.5	231.7	194.8	274.7	169.6	248.5	303.1	322.3	235.4	194.8	205.2
Azar	208.4	237.5	250.0	195.8	276.6	169.9	258.3	306.6	324.3	237.9	195.8	206.8
Dey	240.3	234.9	244.4	260.0	279.2	176.3	258.3	310.9	330.0	235.2	260.0	212.3
Bahman	248.9	237.7	251.7	275.7	281.1	177.6	261.2	313.9	331.8	238.1	275.7	213.9
Esfand	253.7	240.7	258.4	283.1	283.8	178.5	261.4	317.6	340.6	241.2	283.1	215.7
<b>1390</b>												
Farvardin	262.5	241.1	262.6	298.3	287.5	183.5	261.5	319.1	355.7	241.7	298.3	220.3
Ordibehesht	269.2	242.6	283.4	310.6	292.9	183.9	262.5	322.0	361.7	243.7	310.6	221.6
Khordad	271.8	243.6	300.7	314.0	298.0	184.7	263.0	329.3	366.4	245.3	314.0	223.5
Tir	274.3	242.7	312.6	317.4	308.9	187.0	263.9	337.0	375.6	244.7	317.4	227.0
Mordad	278.2	252.2	296.0	319.8	314.4	187.6	264.6	349.9	380.6	253.5	319.8	229.6
Shahrivar	281.0	259.1	311.3	321.1	319.1	188.1	265.3	359.2	385.4	260.6	321.1	231.7
Mehr	285.1	264.9	318.7	324.0	324.0	192.1	273.4	362.7	394.2	266.5	324.0	236.3
Aban	288.3	270.1	316.3	326.4	327.9	192.7	299.2	365.3	397.1	271.4	326.4	239.4