



Central Bank of the Islamic Republic of Iran

General Directorate of Economic Statistics

Export Price Index in Iran

Aban 1396

(October 23 - November 21, 2017)

(1390=100)

©Economic Statistics

Department

www.cbi.ir

Azar 1396

(December 2017)

IN THE NAME OF GOD
Summary Results of the Export Price Index in Iran
Aban 1396
(1390=100)

increase



no change or virtually unchanged



decrease



Percent change compared to

Groups

previous month

similar month of the
previous year

General Index

5.7



26.4



Major Groups:

1- Animal Products

2.0



10.2



2- Vegetable Products

6.6



20.9



3- Animal or Vegetable Fats and Oils

6.8



8.4



4- Prepared Foodstuffs, Beverages and Tobacco

6.4



15.1



5- Mineral Products

9.5



40.9



6- Products of the Chemical or Allied Industries

3.8



31.3



7-Plastics and Articles Thereof, Rubber and Articles Thereof

3.0



18.6



8- Skins and Leather and Articles Thereof

2.5



0.2



9- Wood and Articles of Wood

12.2



7.9



10- Textiles and Textile Articles

2.6



15.2



11- Footwear

2.0



17.2



12- Articles of Stone

2.3



10.9



13- Base Metals and Articles of Base Metal

5.5



32.4



14- Machinery and Mechanical Appliances, Electrical Equipment

2.9



12.8



15- Vehicles and Associated Transport Equipment

17.8



6.6



Special Group:

Petrochemical Products

6.7



35.3



Export Price Index in Iran

Aban 1396

(1390 = 100)

The Export Price Index (**XPI**) increased 5.7 percent in Aban 1396* following a 4.7 percent rise in Mehr 1396. The index level of 275.9 was 26.4 percent higher than in Aban 1395.

During the first eight months of the current Iranian year, the XPI rose 16.7 percent compared to the similar period in 1395.

The XPI has advanced 14.5 percent over the past twelve months.

In Aban, the animal products group index rose 2.0 percent, which was attributed to the increases in the prices for yogurt, and frozen fish.

The vegetable products group index went up 6.6 percent. Increases in the prices for pistachio, raisin, and shelled almond were the major reasons for this advance.

The 6.8 percent decline in the animal or vegetable fats and oils group index was mainly due to the decrease in the price for hydrogenated oil.

The prepared foodstuffs, beverages and tobacco group index advanced 6.4 percent. The mentioned rise was attributed to the increases in the prices for tomato paste, biscuit and wafer, potato chips, cake, ice cream, and non-cacao chocolate.

Mostly as a result of increasing in the prices for propane, butane, industrial oil, cement, bitumen, copper concentrate, paraffin wax and engine oil, the mineral products group index moved up 9.5 percent.

* The index is computed on the Iranian Rial basis. In this month, the exchange rates of Dollar and Euro increased 2.5 percent and 1.2 percent, respectively.

The 3.8 percent increase in the products of the chemical or allied industries group index was led by rises in the prices for styrene, urea fertilizer, ammonia, dodecyl benzene, calcium carbonate powder, and "detergent powders and liquids" while the decline in the price for methanol was also considerable.

The plastics and articles thereof, rubber and articles thereof group index turned up 3.0 percent. Higher prices for high density polyethylene, low density polyethylene, and plastic hoses were the major factors for this increase.

During this month, the group index for skins and leather and articles thereof rose 2.5 percent while the group index for wood and articles of wood went down 12.2 percent.

The textiles and textile articles group index moved up 2.6 percent, largely due to the increases in the prices for hand-woven carpet and machine-made carpet.

The footwear group index turned up 2.0 percent, over this month.

The articles of stone group index increased 2.3 percent which was principally due to the advance in the price for "tile and ceramic".

The base metals and articles of base metal group index advanced 5.5 percent in Aban. The rise was driven by increasing prices for zinc ingot, hot coil iron, cathode copper, aluminium ingot, and iron beam.

The machinery and mechanical appliances, electrical equipment group index increased 2.9 percent, over this month, mostly as a result of the increases in the prices for air cooler and cable.

The vehicles and associated transport equipment group index went up 17.8 percent, mainly due to the rise in the price for tractor.

Export Price Index in Iran (1390=100)

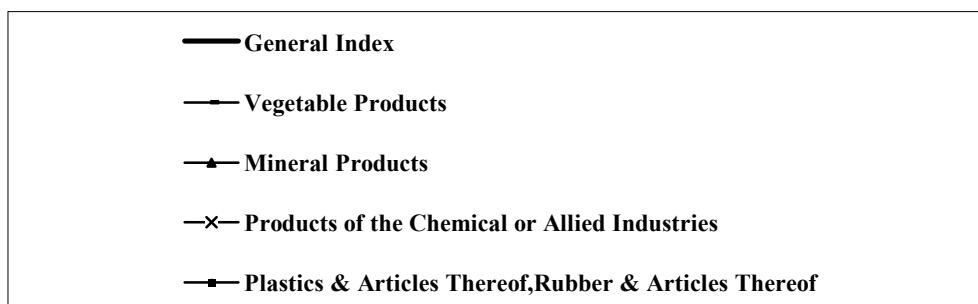
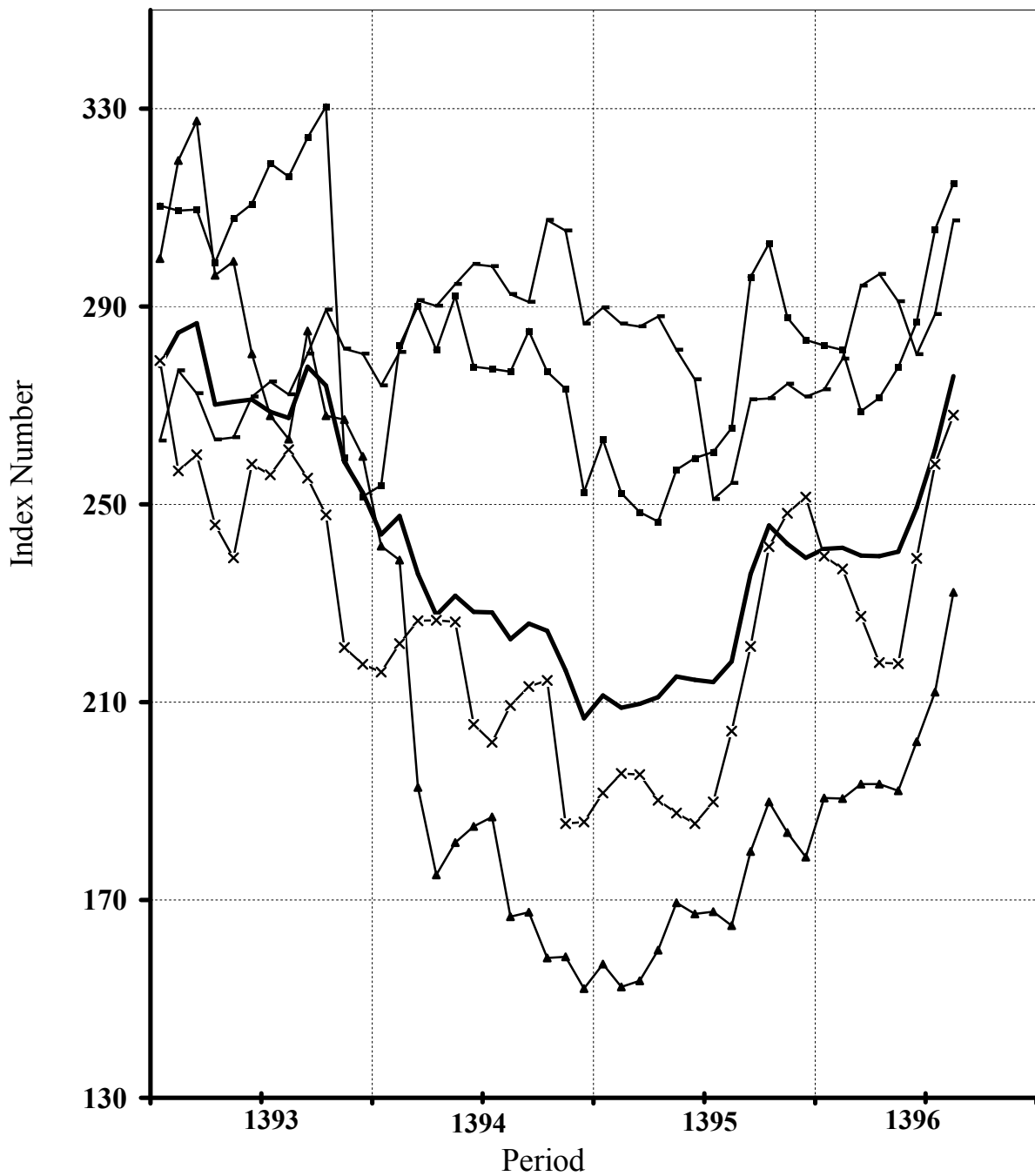


Table 1
Export Price Index in Iran
Index Numbers and Their Percent Changes
Aban 1396
(1390 = 100)

Description	Base Year Weight	Index Number in Aban 1396	Percent Change			
			Aban 1396 Compared to		Aban 1395 Compared to	
			Previous month	Similar month of the previous year	Previous month	Similar month of the previous year
General Index	100.00	275.9	5.7	26.4	1.9	-2.0
Major Groups and Selected Sub Groups:						
1-Animal Products	2.41	352.7	2.0	10.2	1.6	9.0
2-Vegetable Products	10.43	307.4	6.6	20.9	1.3	-13.1
Edible Fruit and Nuts	6.90	348.2	8.3	33.5	0.4	-13.6
Coffee, Tea and Spices	1.31	306.1	0.8	-15.1	0.2	-4.5
Lac, Gums, Resins	0.18	402.0	3.0	25.7	0.4	5.9
3-Animal or Vegetable Fats & Oils	0.36	357.6	-6.8	8.4	-3.9	4.1
4-Prepared Foodstuffs, Beverages & Tobacco	3.72	373.3	6.4	15.1	0.9	4.8
5-Mineral Products	31.80	232.2	9.5	40.9	-1.7	-1.1
Mineral Materials	2.85	289.1	3.8	11.4	1.1	-14.6
Metals Stone	3.15	241.4	2.5	52.9	1.3	3.1
Mineral Fuels & Related Oils	25.80	224.9	11.2	45.1	-2.5	1.5
6-Products of the Chemical or Allied Industries	20.11	268.1	3.8	31.3	7.5	-2.5
Inorganic Chemicals	2.70	235.9	2.3	4.1	4.4	-6.7
Organic Chemicals	12.69	294.5	3.6	45.2	12.2	6.1
Fertilisers	3.58	207.6	7.2	18.9	-0.9	-20.9
Tanning or Dyeing Extracts	0.38	234.7	2.5	12.0	1.4	3.1
Soap, Organic Surface-Active Agents	0.56	286.5	2.1	5.7	0.4	-6.4
7-Plastics & Articles Thereof, Rubber & Articles Thereof	10.51	314.9	3.0	18.6	1.9	-4.1
Plastics & Articles Thereof	10.28	317.5	3.1	18.7	1.9	-4.0
8-Skins & Leather & Articles Thereof	0.59	131.4	2.5	0.2	1.3	-5.5
9-Wood & Articles of Wood	0.05	257.9	-12.2	-7.9	5.4	6.3
10-Textiles & Textile Articles	3.61	316.4	2.6	15.2	0.7	2.5
Carpets & Other Textile Floor Coverings	2.78	324.9	2.5	15.7	1.9	7.6
11-Footwear	0.46	462.6	2.0	17.2	1.4	1.1
12-Articles of Stone	2.13	268.6	2.3	10.9	3.2	1.5
13-Base Metals & Articles of Base Metal	9.71	278.0	5.5	32.4	3.2	0.8
Iron and Steel	3.01	242.6	8.0	36.9	2.3	-5.0
Copper	2.37	282.7	2.5	46.2	1.4	3.1
Aluminium	1.50	261.2	1.7	7.6	9.1	14.9
14-Machinery & Mechanical Appliances, Electrical Equipment	2.96	283.6	2.9	12.8	2.0	6.0
15-Vehicles & Associated Transport Equipment	1.15	290.8	17.8	6.6	0.8	-1.6
Special Group:						
Petrochemical Products	46.33	260.6	6.7	35.3	2.6	-0.6

Table 2
Export Price Index in Iran
General and Major Groups Index Numbers
(1390 = 100)

Description Period	General Index	Animal Products	Vegetable Products	Animal or Vegetable Fats& Oils	Prepared Foodstuffs, Beverages & Tobacco	Mineral Products	Products of the Chemical or Allied Industries	Plastics & Articles Thereof, Rubber & Articles Thereof	Skins& Leather & Articles Thereof
1376	12.1	10.8	14.8	13.1	14.3	4.2	12.6	19.9	8.9
1377	14.8	13.6	15.4	18.1	19.7	6.9	15.8	23.8	9.4
1378	23.6	24.2	31.0	26.9	29.0	15.8	21.3	38.7	16.3
1379	27.8	31.3	33.3	23.8	32.9	20.8	24.7	41.2	25.1
1380	28.1	35.3	31.9	21.7	33.6	20.6	26.8	41.4	32.9
1381	29.7	40.8	31.4	25.5	34.9	22.2	30.7	42.4	32.6
1382	33.2	52.5	30.7	29.1	38.3	23.8	36.2	43.2	34.9
1383	42.6	59.8	40.0	32.1	42.8	31.1	52.2	63.8	36.9
1384	48.1	58.5	43.2	33.5	50.1	40.8	55.1	65.7	33.3
1385	56.2	65.8	49.7	36.4	53.1	48.5	63.2	74.0	31.7
1386	69.3	73.6	68.3	52.6	58.2	63.8	77.0	79.1	41.3
1387	84.6	78.5	97.9	71.9	77.3	68.1	98.3	89.5	45.3
1388	78.9	79.5	115.2	58.8	81.9	66.1	69.1	81.4	43.7
1389	87.6	84.8	99.5	76.6	86.7	82.6	79.8	86.5	67.1
1390	100.0	100.0	100.0	100.0	100.0	100.0	100.0	100.0	100.0
1391	224.1	229.0	223.6	240.4	226.7	224.8	232.0	215.5	198.0
1392	273.0	274.2	268.4	297.1	301.1	276.9	278.5	301.5	234.5
1393	271.7	285.5	274.1	298.5	299.4	286.2	249.9	304.0	212.5
1394	228.3	287.4	292.5	308.4	306.4	183.7	211.1	276.6	139.4
1395	222.2	312.4	275.1	339.1	327.8	168.7	208.6	268.6	129.8
1395	Aban	218.2	320.0	254.3	329.8	324.2	164.8	204.2	131.1
1395	Azar	235.9	338.6	271.2	345.6	341.2	179.8	221.3	139.1
1395	Dey	245.8	347.1	271.5	362.6	351.7	189.8	241.5	145.0
1395	Bahman	242.0	324.9	274.4	337.3	341.3	183.7	248.2	130.9
1395	Esfand	239.2	319.3	271.8	328.1	335.8	178.7	251.5	128.9
1396	Farvardin	241.0	319.4	273.2	319.6	336.4	190.6	239.5	121.7
1396	Ordibehesht	241.2	320.2	279.5	323.3	335.0	190.5	237.0	123.2
1396	Khordad	239.7	325.9	294.2	333.7	328.5	193.4	227.4	113.5
1396	Tir	239.5	325.9	296.6	335.6	332.2	193.4	218.0	112.9
1396	Mordad	240.5	330.4	291.0	346.5	335.7	192.1	217.8	113.9
1396	Shahrivar	249.3	334.5	280.3	339.8	342.4	202.0	239.1	116.2
1396	Mehr	261.1	345.7	288.5	383.7	350.7	212.1	258.2	128.2
1396	Aban	275.9	352.7	307.4	357.6	373.3	232.2	268.1	131.4

Table 2 (Continued)

Period	Description	General Index	Wood & Articles of Wood	Textiles & Textile Articles	Footwear	Articles of Stone	Base Metals & Articles of Base Metal	Machinery & Mechanical Appliances , Electrical Equipment	Vehicles & Associated Transport Equipment
1395	1376	12.1	21.8	20.1	14.9	26.0	10.2	22.0	35.3
	1377	14.8	29.7	21.8	18.6	38.6	12.0	28.9	44.3
	1378	23.6	38.8	27.4	30.3	65.6	20.0	46.5	61.4
	1379	27.8	43.4	31.7	32.5	65.0	22.1	48.9	64.0
	1380	28.1	45.2	31.1	29.6	60.7	21.1	48.6	63.2
	1381	29.7	51.8	32.2	33.5	61.8	22.0	48.4	64.7
	1382	33.2	52.6	36.8	38.7	63.1	28.0	52.4	66.6
	1383	42.6	56.9	40.2	43.3	67.3	47.9	59.7	71.1
	1384	48.1	54.9	48.6	43.6	68.2	50.9	72.3	68.4
	1385	56.2	60.1	58.5	46.1	72.9	62.6	80.4	73.1
	1386	69.3	87.3	65.4	49.0	77.5	75.2	100.8	86.1
	1387	84.6	106.8	80.9	54.5	86.9	94.5	107.7	90.7
	1388	78.9	97.8	86.6	56.5	90.1	61.6	95.1	93.5
	1389	87.6	98.6	89.8	73.3	92.5	87.4	94.7	98.7
	1390	100.0	100.0	100.0	100.0	100.0	100.0	100.0	100.0
	1391	224.1	223.5	214.4	206.6	238.9	215.1	229.9	207.5
	1392	273.0	276.1	212.0	281.7	261.0	242.0	264.9	251.8
	1393	271.7	272.4	233.5	366.6	249.0	247.5	243.8	247.0
	1394	228.3	272.8	260.2	380.8	243.5	212.7	239.5	271.5
	1395	222.2	280.4	275.1	394.9	240.0	205.4	250.4	267.9
1396	Aban	218.2	280.1	274.7	394.6	242.1	209.9	251.4	272.8
	Azar	235.9	277.3	302.2	420.2	254.5	224.0	265.6	288.8
	Dey	245.8	340.4	310.9	432.2	264.9	229.8	273.3	258.6
	Bahman	242.0	280.4	300.4	414.8	258.2	231.2	264.6	256.8
	Esfand	239.2	270.9	293.9	408.8	253.6	229.9	259.9	252.8
	Farvardin	241.0	273.9	292.1	408.7	248.4	236.8	260.8	252.9
	Ordibehesht	241.2	287.1	293.3	406.4	250.1	238.5	260.1	252.8
	Khordad	239.7	276.4	286.0	403.3	248.3	235.6	259.2	268.3
	Tir	239.5	270.4	290.8	408.1	246.9	241.3	261.5	291.7
	Mordad	240.5	278.8	296.2	435.8	250.2	246.6	264.1	297.0
	Shahrivar	249.3	269.1	302.0	447.5	255.3	252.1	269.7	304.8
	Mehr	261.1	293.6	308.4	453.5	262.6	263.4	275.5	246.9
	Aban	275.9	257.9	316.4	462.6	268.6	278.0	283.6	290.8