



Central Bank of the Islamic Republic of Iran
General Directorate of Economic Statistics

Producer Price Index in Iran
Mordad 1384
(July 23 - August 22, 2005)
Monthly Report

Summary Results of the Producer Price Index in Iran

Mordad 1384

increase



no change



decrease



Percent change compared to

Groups

previous month

similar month of
the previous year

General Index

0.4



9.0



Major Groups:

1- Agriculture, Animal Husbandry and Forestry

3.0



1.0



2- Fishing

1.4



22.2



3- Mining and Quarrying

1.2



6.0



4- Manufacturing

0.3



10.0



5- Electricity, Gas and Water Supply

0.1



0.5



6- Repairing of Motor Vehicles

0.4



15.1



7- Hotels and Restaurants

0.5



12.1



8- Transport, Storage and Communications

0.3



14.0



9- Financial Intermediation

2.0



6.9



10- Real Estate, Renting and Business Activities

1.1



14.7



11- Education

0.4



19.3



12- Health and Social Work

1.4



19.7



13- Other Community, Social and Personal Service Activities

0.2



14.9



Special Groups:

1- Agriculture, Animal Husbandry, Forestry and Fishing

2.9



1.4



2- Mining and Quarrying, Manufacturing
and Electricity, Gas and Water Supply

0.2



9.5



3- Services

0.5



14.2



Producer Price Index in Iran

Mordad 1384

(1376 = 100)

The Producer Price Index (**PPI**) went down 0.4 percent in Mordad 1384. Showing the index point of 310.0, the **PPI** was 9.0 percent higher than the similar month in 1383.

During the first five months of the current Iranian year, the Producer Price Index rose 12.3 percent compared to the similar period in 1383.

The Producer Price Index increased 15.1 percent during the last twelve months leading to Mordad 1384 compared with the similar preceding period.

In Mordad, the agriculture, animal husbandry and forestry group index declined 3.0 percent, which was mainly attributed to the decrease in the prices of domestic potato, garden vegetables, straw, lucerne, fruits with seeds and stones. In this group the prices of wheat, poultry, egg and honey went up.

The advance in the prices of Persian Gulf fish caused 1.4 percent increase in the group index of fishing.

The mining and quarrying group index decreased 1.2 percent.

The manufacturing group index rose 0.3 percent.

The electricity, gas and water supply group index declined 0.1 percent.

The repairing of motor vehicles group index, the hotels and restaurants group index and the transport, storage and communications group index went up 0.4 percent, 0.5 percent and 0.3 percent, respectively.

The financial intermediation group index decreased 2.0 percent.

The real estate, renting and business activities group index and the education group index increased 1.1 percent and 0.4 percent, respectively.

The health and social work group index increased 1.4 percent, which was due to the rise in the prices of hospital activities.

The other community, social and personal service activities group index rose 0.2 percent.

Producer Price Index in Iran (1376 = 100)

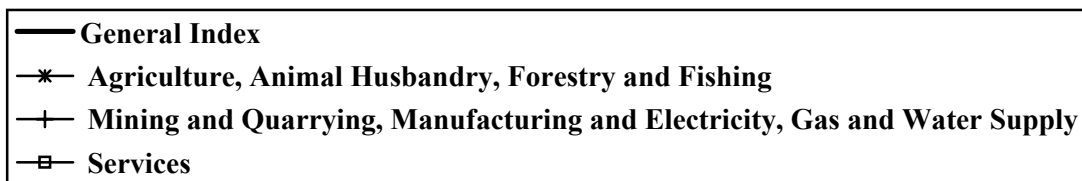
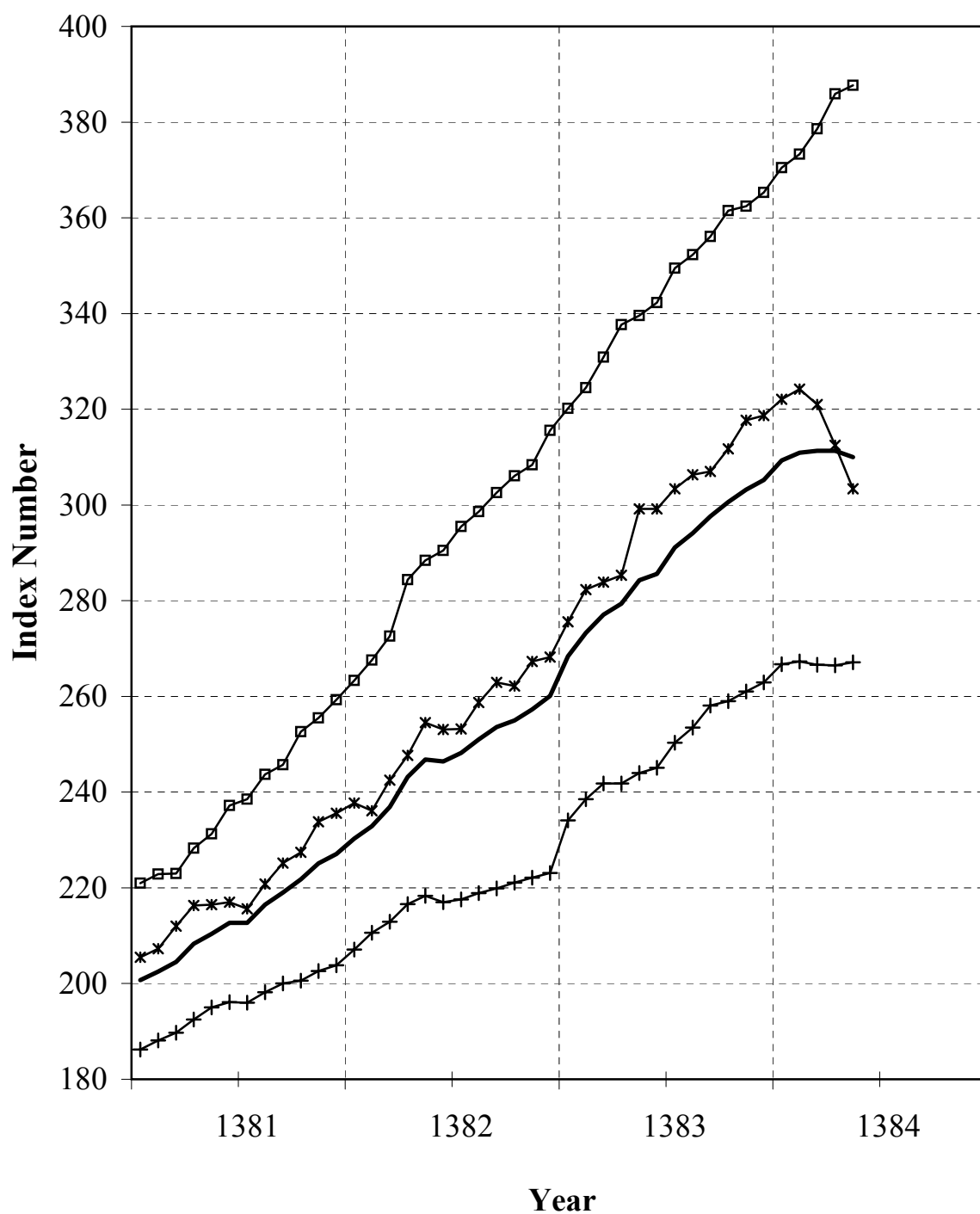


Table 1
Producer Price Index in Iran
Index Numbers and Their Percent Changes
Mordad 1384
(1376 = 100)

Description	Base Year Weight	Index Number in Mordad 1384	Percent Change			
			Mordad 1384 compared to:		Mordad 1383 compared to:	
			previous month	similar month of the previous year	previous month	similar month of the previous year
Genral Index	100.00	310.0	-0.4	9.0	1.8	15.2
Major Groups and Selected Sub Groups:						
1- Agriculture, Animal Husbandry and Forestry	23.19	301.8	-3.0	1.0	4.8	17.6
Agriculture, animal husbandry and related services	22.94	302.2	-3.0	0.9	4.8	17.6
Agriculture	12.56	318.8	-5.6	-0.3	8.4	17.5
Cereals, pulses and other products	5.23	296.7	0.3	8.9	1.9	8.9
Cereals	3.50	300.6	1.1	9.6	3.7	6.0
Pulses	0.39	274.4	6.1	17.6	2.0	10.6
Oil seeds	0.34	277.1	0.8	16.5	0.0	19.0
Other products	1.00	298.3	-4.1	1.8	-2.9	15.9
Vegetables	3.31	370.0	-6.1	-5.0	6.3	34.0
Patch vegetables	0.67	319.4	-2.3	-22.8	13.9	15.7
Garden vegetables	0.87	306.6	-12.8	-7.9	3.7	22.0
Leaf vegetables	0.47	360.1	0.0	3.3	-0.5	34.9
Root vegetables	0.21	359.2	13.4	14.6	-8.5	29.8
Other vegetables	1.09	458.5	-8.0	1.4	8.6	57.5
Fruits, dried fruits, spices and tea	4.02	305.6	-11.8	-5.9	18.9	13.7
Citrus	0.85	310.2	0.0	24.3	0.0	-35.3
Fruits with seeds and stones	1.62	341.6	-22.5	-26.6	36.5	51.3
Dried fruits	1.33	280.9	-1.1	22.4	1.8	10.3
Spices and tea	0.22	173.4	0.5	11.7	-0.3	-26.5
Animal husbandry	10.09	284.2	0.8	2.9	0.1	17.7
Live animals	6.48	314.3	-0.3	2.2	0.2	20.9
Milk	1.75	238.7	-0.3	1.7	-0.9	13.7
Other animals and animals product	1.86	222.2	7.6	7.0	1.1	7.4
Related services to agriculture and animal husbandary	0.29	212.7	0.0	-1.2	0.0	21.2
Forestry	0.25	258.0	0.6	9.0	0.1	14.8
2- Fishing	0.42	394.9	1.4	22.2	8.7	13.5
3- Mining and Quarrying	0.94	180.2	-1.2	6.0	0.1	6.6
4- Manufacturing	45.17	266.8	0.3	10.0	1.0	11.6
Food products and beverages	11.21	295.1	0.6	7.9	-1.0	3.2
Meat and its products, compotes and conserves, butter and vegetable oils	5.66	303.4	0.9	3.0	-2.2	4.8
Dairy products	1.59	276.3	0.4	7.7	0.4	11.5
Wheat flour, starch and its products and prepared animal feeds	0.66	336.7	-0.1	45.3	0.4	-22.8
Other food products	2.90	281.6	0.2	12.1	0.5	2.5

Table 1 (continued)

Description	Base Year Weight	Index Number in Mordad 1384	Percent Change			
			Mordad 1384 compared to:		Mordad 1383 compared to:	
			previous month	similar month of the previous year	previous month	similar month of the previous year
Beverages	0.40	282.3	-0.1	4.7	0.3	3.4
Tobacco products	0.17	244.4	0.0	13.9	0.0	3.3
Textiles	4.94	196.8	-0.2	12.0	0.0	13.1
Spinning and weaving	1.99	176.8	-0.7	5.8	0.2	10.7
Other textiles	1.89	217.4	0.2	19.1	0.3	19.4
Knitted and crocheted fabrics and articles	1.06	197.5	-0.3	10.0	-1.0	6.7
Wearing apparel	2.52	166.0	0.0	11.9	0.1	5.6
Leather and leather products	1.69	166.2	1.0	8.3	0.5	4.8
Wood and wooden products	0.54	247.6	0.5	7.1	3.4	12.0
Paper and paper products	0.49	218.5	0.3	15.7	1.1	9.4
Publishing, printing and reproduction	0.30	256.8	0.0	15.3	0.0	7.8
Carbon and refined petroleum products	1.98	485.3	-0.2	5.2	0.4	10.9
Chemical and petrochemical products	3.80	328.4	0.5	24.3	-0.3	8.5
Rubber and plastic products	0.87	222.1	0.3	15.4	1.3	6.4
Non - metallic mineral products	2.23	332.5	0.9	5.6	2.2	20.2
Basic metals	4.15	334.3	-0.9	6.6	8.1	48.6
Fabricated metallic products except machinery	0.91	275.3	0.0	16.9	2.6	18.9
Machinery	2.93	193.7	0.5	7.3	1.0	6.9
Transformers and electrical equipment	0.94	260.2	1.6	13.7	4.7	23.3
Radio, television and communication equipment	0.38	123.1	0.0	-0.3	-0.2	-3.1
Medical, precision and optical instruments	0.12	220.8	2.2	9.6	4.7	2.2
Motor vehicles and related equipment	3.41	185.3	0.2	5.9	-1.6	1.4
Other transport equipment	0.37	137.3	1.1	-5.2	1.5	8.9
Furniture and other manufacturing	1.19	304.8	0.4	19.6	0.9	16.7
5- Electricity, Gas and Water Supply	1.80	318.8	-0.1	0.5	0.0	16.7
6- Repairing of Motor Vehicles	0.32	317.8	0.4	15.1	1.0	18.8
7- Hotels and Restaurants	0.73	374.3	0.5	12.1	1.2	16.3
8- Transport, Storage and Communications	10.53	340.1	0.3	14.0	0.0	12.1
Land transport	9.38	345.2	0.1	14.0	0.0	12.8
Air transport	0.42	414.0	1.0	24.1	0.0	0.8
Post and telecommunications	0.59	209.2	0.0	0.8	0.0	15.2
9- Financial Intermediation	1.17	858.6	-2.0	6.9	-0.8	28.9
10- Real Estate, Renting and Business Activities	11.19	374.1	1.1	14.7	1.4	19.8
11- Education	0.59	447.5	0.4	19.3	0.2	20.8
12- Health and Social Work	2.23	422.2	1.4	19.7	0.6	19.1
13- Other Community, Social and Personal Service Activities	1.72	401.9	0.2	14.9	0.3	17.7
Special Groups:						
1- Agriculture, Animal Husbandry, Forestry and Fishing	23.61	303.4	-2.9	1.4	4.9	17.6
2- Mining and Quarrying, Manufacturing and Electricity, Gas and Water Supply	47.91	267.1	0.2	9.5	0.9	11.8
3- Services	28.48	387.7	0.5	14.2	0.6	17.8

Producer Price Index in Iran
General, Major and Special Groups Index Numbers
(1376 = 100)

Description Period	General Index	Major Groups							
		Agriculture, Animal Husbandry and Forestry	Fishing	Mining and Quarrying	Manufacturing	Electricity, Gas and Water Supply	Repairing of Motor Vehicles	Hotels and Restaurants	Transport, Storage and Communications
1370	22.1	22.9		27.0	21.0	11.0		19.3	18.6
1371	28.2	29.2		34.9	26.8	19.0		26.0	24.7
1372	34.9	35.8		36.9	33.7	24.6		33.7	32.2
1373	46.4	46.9		41.3	46.3	45.4		44.6	45.5
1374	68.5	74.1		65.8	69.8	55.9		64.9	65.8
1375	86.5	87.8		90.0	90.1	66.9		84.9	84.2
1376	100.0	100.0	100.0	100.0	100.0	100.0	100.0	100.0	100.0
1377	118.7	122.6	128.0	122.8	117.0	131.4	121.1	125.7	115.3
1378	145.9	152.7	152.5	130.5	145.7	166.8	146.6	156.7	138.1
1379	169.6	180.0	190.8	152.8	168.5	190.8	161.9	185.2	152.1
1380	188.1	194.9	211.8	146.1	177.3	211.6	178.7	210.0	188.3
1381	213.4	218.7	260.7	151.2	195.5	226.0	201.2	246.7	223.1
1382	246.8	253.3	272.9	157.7	216.4	266.7	236.3	289.5	266.8
1383	288.3	298.6	334.3	170.6	248.2	315.1	280.2	335.9	304.7
1383:									
Mordad	284.3	298.8	323.2	170.0	242.6	317.3	276.0	334.0	298.3
Shahrivar	285.6	298.6	333.6	170.5	243.8	317.4	280.5	335.9	298.4
Mehr	291.1	302.8	335.1	170.5	249.2	318.9	284.9	339.0	309.0
Aban	294.1	305.4	355.0	170.5	252.6	319.3	288.3	340.8	309.7
Azar	297.6	306.1	357.5	172.7	257.5	319.8	291.5	344.6	310.0
Dey	300.6	311.1	349.2	174.7	258.4	319.0	291.5	348.0	320.1
Bahman	303.2	316.1	406.9	179.9	260.4	318.6	293.3	349.5	320.2
Esfand	305.2	317.8	367.4	179.9	262.4	318.2	298.7	353.1	325.0
1384:									
Farvardin	309.3	321.5	355.8	180.6	266.4	318.4	303.2	360.3	325.8
Ordibehesht	310.9	323.7	350.4	179.8	267.1	317.3	308.7	362.8	325.5
Khordad	311.3	320.1	370.1	182.5	266.3	318.6	313.9	367.5	327.1
Tir	311.3	311.1	389.3	182.4	266.1	319.0	316.4	372.6	339.2
Mordad	310.0	301.8	394.9	180.2	266.8	318.8	317.8	374.3	340.1

Table 2 (continued)

Description Period	General Index	Major Groups					Special Groups		
		Financial Intermediation	Real Estate, Renting and Business Activities	Education	Health and Social Work	Other Community Social and Personal Service Activities	Agriculture, Animal Husbandry, Forestry and Fishing	Mining and Quarrying, Manufacturing and Electricity, Gas and Water Supply	Services
1370	22.1	61.8	24.4	19.8	14.3		23.0	20.5	24.6
1371	28.2	69.0	30.4	28.2	20.4		29.2	26.4	30.8
1372	34.9	77.0	36.4	41.2	27.6		35.8	33.3	37.6
1373	46.4	77.4	44.4	58.1	38.0		46.9	46.2	46.3
1374	68.5	99.2	56.8	74.1	53.5		74.1	69.1	61.6
1375	86.5	99.6	76.5	94.5	76.1		87.8	89.0	80.0
1376	100.0	100.0	100.0	100.0	100.0	100.0	100.0	100.0	100.0
1377	118.7	100.2	119.3	110.4	122.7	118.0	122.7	117.7	117.2
1378	145.9	120.1	139.2	132.0	153.6	141.8	152.7	146.2	139.7
1379	169.6	156.6	164.4	168.9	183.7	170.8	180.1	169.0	162.0
1380	188.1	267.7	195.8	224.2	213.7	216.5	195.2	178.0	199.4
1381	213.4	370.3	234.1	275.9	251.4	242.0	219.4	195.7	238.2
1382	246.8	598.1	278.8	333.6	295.5	302.9	253.7	217.1	291.1
1383	288.3	801.4	331.7	409.9	350.9	357.6	299.2	249.2	345.2
1383 :									
Mordad	284.3	803.2	326.2	375.1	352.8	349.8	299.2	244.0	339.6
Shahrivar	285.6	822.4	330.2	376.6	354.2	351.2	299.2	245.1	342.3
Mehr	291.1	806.2	333.7	444.2	356.4	364.2	303.4	250.3	349.5
Aban	294.1	829.9	337.1	445.0	358.1	365.3	306.3	253.5	352.3
Azar	297.6	845.6	343.0	445.0	361.9	369.9	307.0	258.1	356.1
Dey	300.6	845.7	346.8	445.1	362.0	371.2	311.7	259.0	361.5
Bahman	303.2	829.2	349.9	445.8	363.8	372.5	317.7	261.0	362.4
Esfand	305.2	812.9	353.4	445.8	366.3	374.9	318.7	262.9	365.3
1384 :									
Farvardin	309.3	860.9	357.6	445.8	373.0	382.6	322.1	266.7	370.5
Ordibehesht	310.9	857.8	361.7	445.8	386.9	386.7	324.2	267.3	373.3
Khordad	311.3	878.2	365.9	445.8	404.1	398.5	321.0	266.6	378.6
Tir	311.3	875.8	370.0	445.9	416.2	401.0	312.5	266.5	385.9
Mordad	310.0	858.6	374.1	447.5	422.2	401.9	303.4	267.1	387.7