



Central Bank of the Islamic Republic of Iran
General Directorate of Economic Statistics

Producer Price Index in Iran
Shahrivar 1384
(August 23 - September 22, 2005)
Monthly Report

Summary Results of the Producer Price Index in Iran

Shahrivar 1384

increase



no change



decrease



Percent change compared to

Groups

previous month

similar month of
the previous year

General Index

0.5



9.1



Major Groups:

1- Agriculture, Animal Husbandry and Forestry

0.2



1.3



2- Fishing

0.9



17.3



3- Mining and Quarrying

10.0



16.3



4- Manufacturing

0.6



10.1



5- Electricity, Gas and Water Supply

0.1



0.5



6- Repairing of Motor Vehicles

0.6



14.0



7- Hotels and Restaurants

1.6



13.2



8- Transport, Storage and Communications

0.1



14.1



9- Financial Intermediation

1.1



3.3



10- Real Estate, Renting and Business Activities

1.1



14.6



11- Education

0.6



19.5



12- Health and Social Work

1.5



21.0



13- Other Community, Social and Personal Service Activities

0.1



14.3



Special Groups:

1- Agriculture, Animal Husbandry, Forestry and Fishing

0.2



1.6



2- Mining and Quarrying, Manufacturing
and Electricity, Gas and Water Supply

0.7



9.8



3- Services

0.5



13.9



Producer Price Index in Iran

Shahrivar 1384

(1376 = 100)

The Producer Price Index (**PPI**) went up 0.5 percent in Shahrivar 1384. Showing the index point of 311.7, the **PPI** was 9.1 percent higher than the similar month in 1383.

During the first six months of the current Iranian year, the Producer Price Index rose 11.8 percent compared to the similar period in 1383.

The Producer Price Index increased 14.5 percent during the last twelve months leading to Shahrivar 1384 compared with the similar preceding period.

In Shahrivar, the agriculture, animal husbandry and forestry group index went up 0.2 percent.

The decline in the prices of Iranian river fish caused 0.9 percent decrease in the group index of fishing.

The mining and quarrying group index went up 10.0 percent, which was mainly due to the rise in the price of coal.

The manufacturing group index, the electricity, gas and water supply group index and the repairing of motor vehicles group index increased 0.6 percent, 0.1 percent and 0.6 percent, respectively.

The advance in the prices of hotels and inns caused 1.6 percent rise in the group index of the hotels and restaurants.

The transport, storage and communications group index went up 0.1 percent.

The financial intermediation group index decreased 1.1 percent.

The real estate, renting and business activities group index, the education group index and the health and social work group index rose 1.1 percent, 0.6 percent and 1.5 percent, respectively.

The other community, social and personal service activities group index decreased 0.1 percent.

Producer Price Index in Iran (1376 = 100)

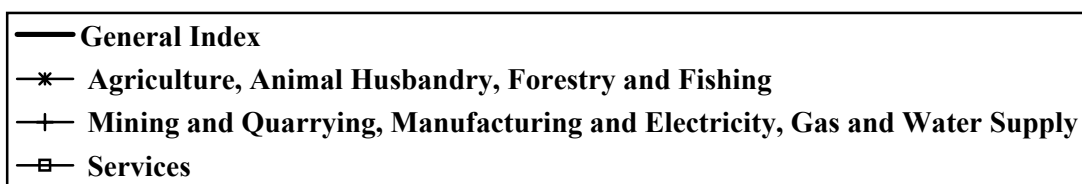
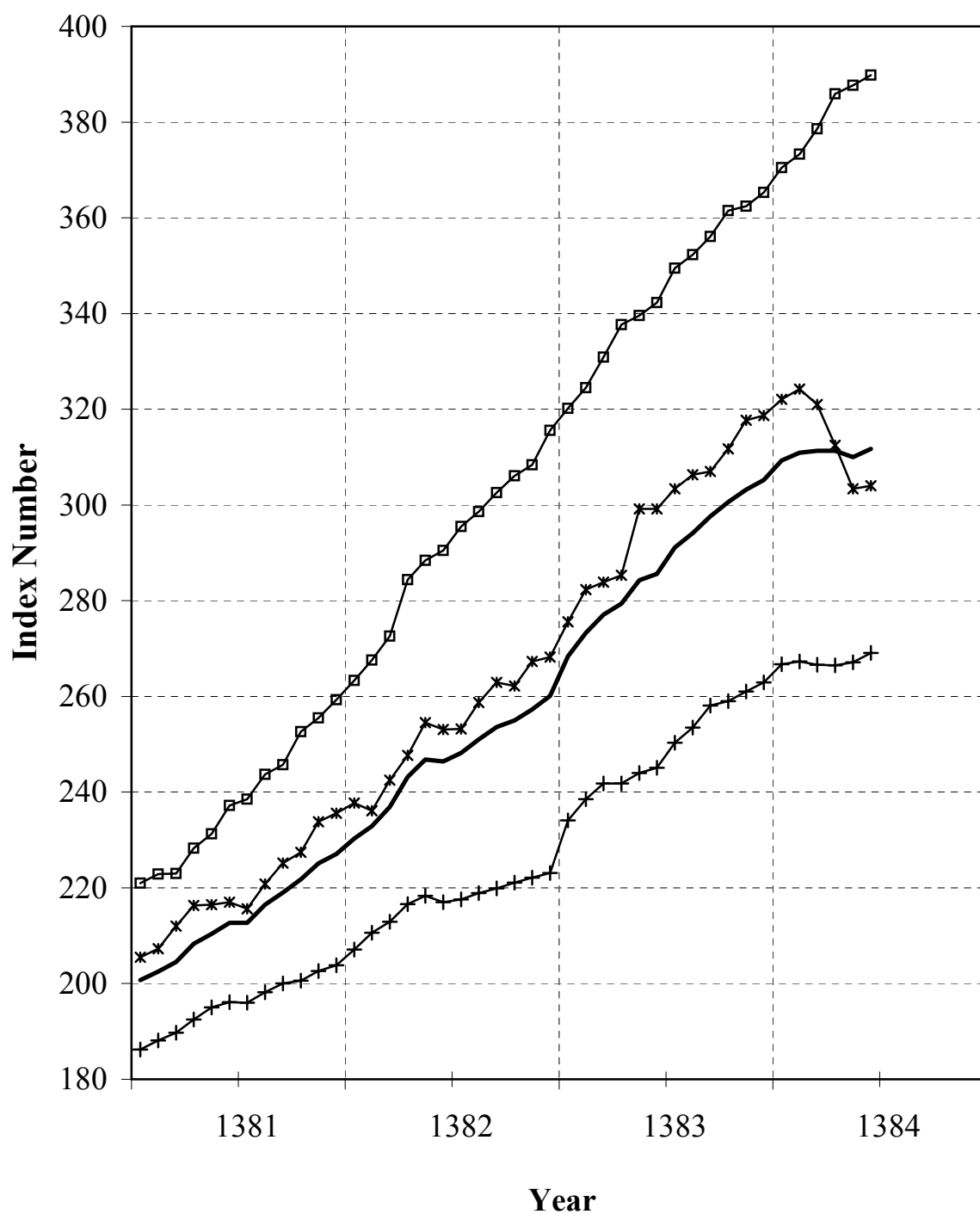


Table 1
Producer Price Index in Iran
Index Numbers and Their Percent Changes
Shahrivar 1384
(1376 = 100)

| Description | Base Year Weight | Index Number in Shahrivar 1384 | Percent Change | | | |
|--|------------------------|--|--------------------------------|---------------------------------------|--------------------------------|---------------------------------------|
| | | | Shahrivar 1384 compared to: | | Shahrivar 1383 compared to: | |
| | | | previous month | similar month of the previous year | previous month | similar month of the previous year |
| Genral Index | 100.00 | 311.7 | 0.5 | 9.1 | 0.5 | 15.9 |
| Major Groups and Selected Sub Groups: | | | | | | |
| 1- Agriculture, Animal Husbandry and Forestry | 23.19 | 302.4 | 0.2 | 1.3 | -0.1 | 18.3 |
| Agriculture, animal husbandry and related services | 22.94 | 302.9 | 0.2 | 1.2 | -0.1 | 18.3 |
| Agriculture | 12.56 | 318.8 | 0.0 | -1.1 | 0.8 | 20.0 |
| Cereals, pulses and other products | 5.23 | 299.7 | 1.0 | 9.3 | 0.7 | 10.2 |
| Cereals | 3.50 | 305.5 | 1.6 | 10.2 | 1.1 | 7.8 |
| Pulses | 0.39 | 283.5 | 3.3 | 23.4 | -1.5 | 5.3 |
| Oil seeds | 0.34 | 277.1 | 0.0 | 13.9 | 2.3 | 21.7 |
| Other products | 1.00 | 293.2 | -1.7 | 0.3 | -0.3 | 17.6 |
| Vegetables | 3.31 | 365.9 | -1.1 | -5.0 | -1.1 | 36.9 |
| Patch vegetables | 0.67 | 255.4 | -20.0 | -33.7 | -6.9 | 33.0 |
| Garden vegetables | 0.87 | 322.8 | 5.3 | -1.7 | -1.4 | 20.6 |
| Leaf vegetables | 0.47 | 333.2 | -7.5 | -4.3 | -0.1 | 34.6 |
| Root vegetables | 0.21 | 361.5 | 0.6 | 28.5 | -10.2 | 21.3 |
| Other vegetables | 1.09 | 483.5 | 5.5 | 3.7 | 3.2 | 54.2 |
| Fruits, dried fruits, spices and tea | 4.02 | 304.9 | -0.2 | -8.7 | 2.8 | 17.4 |
| Citrus | 0.85 | 311.0 | 0.3 | 24.5 | 0.1 | -35.4 |
| Fruits with seeds and stones | 1.62 | 339.5 | -0.6 | -31.0 | 5.7 | 59.0 |
| Dried fruits | 1.33 | 281.1 | 0.1 | 25.3 | -2.2 | 9.3 |
| Spices and tea | 0.22 | 172.6 | -0.5 | 9.9 | 1.2 | -15.8 |
| Animal husbandry | 10.09 | 285.7 | 0.5 | 4.8 | -1.3 | 15.8 |
| Live animals | 6.48 | 314.7 | 0.1 | 3.7 | -1.2 | 17.7 |
| Milk | 1.75 | 238.7 | 0.0 | 2.1 | -0.3 | 12.9 |
| Other animals and animals product | 1.86 | 229.2 | 3.2 | 13.7 | -2.9 | 9.6 |
| Related services to agriculture and animal husbandary | 0.29 | 212.7 | 0.0 | -1.2 | 0.0 | 21.2 |
| Forestry | 0.25 | 259.6 | 0.6 | 9.3 | 0.3 | 18.3 |
| 2- Fishing | 0.42 | 391.2 | -0.9 | 17.3 | 3.2 | 14.0 |
| 3- Mining and Quarrying | 0.94 | 198.3 | 10.0 | 16.3 | 0.3 | 7.0 |
| 4- Manufacturing | 45.17 | 268.5 | 0.6 | 10.1 | 0.5 | 12.9 |
| Food products and beverages | 11.21 | 297.4 | 0.8 | 9.0 | -0.2 | 6.2 |
| Meat and its products, compotes and conserves, butter and vegetable oils | 5.66 | 307.1 | 1.2 | 5.7 | -1.4 | 4.9 |
| Dairy products | 1.59 | 277.1 | 0.3 | 7.7 | 0.3 | 12.0 |
| Wheat flour, starch and its products and prepared animal feeds | 0.66 | 337.1 | 0.1 | 45.6 | -0.1 | 5.2 |
| Other food products | 2.90 | 281.6 | 0.0 | 10.3 | 1.6 | 6.0 |

Table 1 (continued)

| Description | Base Year Weight | Index Number in Shahrivar 1384 | Percent Change | | | |
|---|------------------------|--|--------------------------------|---------------------------------------|--------------------------------|---------------------------------------|
| | | | Shahrivar 1384 compared to: | | Shahrivar 1383 compared to: | |
| | | | previous month | similar month of the previous year | previous month | similar month of the previous year |
| Beverages | 0.40 | 289.8 | 2.7 | 3.3 | 4.1 | 9.2 |
| Tobacco products | 0.17 | 254.5 | 4.1 | 18.6 | 0.0 | 3.3 |
| Textiles | 4.94 | 196.9 | 0.1 | 11.1 | 0.9 | 13.9 |
| Spinning and weaving | 1.99 | 177.3 | 0.3 | 6.5 | -0.4 | 10.8 |
| Other textiles | 1.89 | 217.0 | -0.2 | 16.4 | 2.1 | 21.1 |
| Knitted and crocheted fabrics and articles | 1.06 | 198.0 | 0.3 | 9.4 | 0.8 | 7.3 |
| Wearing apparel | 2.52 | 167.5 | 0.9 | 9.3 | 3.3 | 8.3 |
| Leather and leather products | 1.69 | 167.0 | 0.5 | 8.2 | 0.6 | 5.1 |
| Wood and wooden products | 0.54 | 249.5 | 0.8 | 7.4 | 0.5 | 12.1 |
| Paper and paper products | 0.49 | 222.8 | 2.0 | 14.5 | 3.0 | 10.3 |
| Publishing, printing and reproduction | 0.30 | 256.8 | 0.0 | 15.3 | 0.0 | 7.8 |
| Carbon and refined petroleum products | 1.98 | 490.1 | 1.0 | 5.9 | 0.3 | 12.6 |
| Chemical and petrochemical products | 3.80 | 333.3 | 1.5 | 24.4 | 1.4 | 8.4 |
| Rubber and plastic products | 0.87 | 222.2 | 0.0 | 15.3 | 0.1 | 6.5 |
| Non - metallic mineral products | 2.23 | 333.1 | 0.2 | 5.8 | 0.0 | 19.2 |
| Basic metals | 4.15 | 336.4 | 0.6 | 7.1 | 0.1 | 48.5 |
| Fabricated metallic products except machinery | 0.91 | 275.3 | 0.0 | 16.9 | 0.0 | 18.8 |
| Machinery | 2.93 | 194.8 | 0.6 | 7.6 | 0.3 | 7.0 |
| Transformers and electrical equipment | 0.94 | 260.6 | 0.2 | 13.4 | 0.5 | 24.0 |
| Radio, television and communication equipment | 0.38 | 123.1 | 0.0 | -0.3 | 0.0 | -3.1 |
| Medical, precision and optical instruments | 0.12 | 227.0 | 2.8 | 12.5 | 0.1 | 2.1 |
| Motor vehicles and related equipment | 3.41 | 185.3 | 0.0 | 4.9 | 1.0 | 1.8 |
| Other transport equipment | 0.37 | 137.2 | -0.1 | -5.2 | -0.1 | 5.7 |
| Furniture and other manufacturing | 1.19 | 304.0 | -0.3 | 16.3 | 2.6 | 16.8 |
| 5- Electricity, Gas and Water Supply | 1.80 | 319.0 | 0.1 | 0.5 | 0.0 | 17.1 |
| 6- Repairing of Motor Vehicles | 0.32 | 319.8 | 0.6 | 14.0 | 1.6 | 18.8 |
| 7- Hotels and Restaurants | 0.73 | 380.4 | 1.6 | 13.2 | 0.6 | 15.7 |
| 8- Transport, Storage and Communications | 10.53 | 340.4 | 0.1 | 14.1 | 0.0 | 11.4 |
| Land transport | 9.38 | 345.6 | 0.1 | 14.1 | 0.1 | 12.2 |
| Air transport | 0.42 | 414.0 | 0.0 | 24.8 | -0.5 | 0.2 |
| Post and telecommunications | 0.59 | 209.2 | 0.0 | 1.0 | -0.2 | 10.0 |
| 9- Financial Intermediation | 1.17 | 849.2 | -1.1 | 3.3 | 2.4 | 36.2 |
| 10- Real Estate, Renting and Business Activities | 11.19 | 378.3 | 1.1 | 14.6 | 1.2 | 19.8 |
| 11- Education | 0.59 | 450.0 | 0.6 | 19.5 | 0.4 | 20.7 |
| 12- Health and Social Work | 2.23 | 428.7 | 1.5 | 21.0 | 0.4 | 18.5 |
| 13- Other Community, Social and Personal Service Activities | 1.72 | 401.5 | -0.1 | 14.3 | 0.4 | 15.1 |
| Special Groups: | | | | | | |
| 1- Agriculture, Animal Husbandry, Forestry and Fishing | 23.61 | 304.0 | 0.2 | 1.6 | 0.0 | 18.2 |
| 2- Mining and Quarrying, Manufacturing and Electricity, Gas and Water Supply | 47.91 | 269.1 | 0.7 | 9.8 | 0.5 | 12.9 |
| 3- Services | 28.48 | 389.8 | 0.5 | 13.9 | 0.8 | 17.8 |

Producer Price Index in Iran
General, Major and Special Groups Index Numbers
(1376 = 100)

| <div> <div>Description</div> <div>Period</div> </div> | General Index | Major Groups | | | | | | | |
|---|---------------|--|---------|----------------------|---------------|-----------------------------------|-----------------------------|------------------------|---------------------------------------|
| | | Agriculture, Animal Husbandry and Forestry | Fishing | Mining and Quarrying | Manufacturing | Electricity, Gas and Water Supply | Repairing of Motor Vehicles | Hotels and Restaurants | Transport, Storage and Communications |
| 1370 | 22.1 | 22.9 | | 27.0 | 21.0 | 11.0 | | 19.3 | 18.6 |
| 1371 | 28.2 | 29.2 | | 34.9 | 26.8 | 19.0 | | 26.0 | 24.7 |
| 1372 | 34.9 | 35.8 | | 36.9 | 33.7 | 24.6 | | 33.7 | 32.2 |
| 1373 | 46.4 | 46.9 | | 41.3 | 46.3 | 45.4 | | 44.6 | 45.5 |
| 1374 | 68.5 | 74.1 | | 65.8 | 69.8 | 55.9 | | 64.9 | 65.8 |
| 1375 | 86.5 | 87.8 | | 90.0 | 90.1 | 66.9 | | 84.9 | 84.2 |
| 1376 | 100.0 | 100.0 | 100.0 | 100.0 | 100.0 | 100.0 | 100.0 | 100.0 | 100.0 |
| 1377 | 118.7 | 122.6 | 128.0 | 122.8 | 117.0 | 131.4 | 121.1 | 125.7 | 115.3 |
| 1378 | 145.9 | 152.7 | 152.5 | 130.5 | 145.7 | 166.8 | 146.6 | 156.7 | 138.1 |
| 1379 | 169.6 | 180.0 | 190.8 | 152.8 | 168.5 | 190.8 | 161.9 | 185.2 | 152.1 |
| 1380 | 188.1 | 194.9 | 211.8 | 146.1 | 177.3 | 211.6 | 178.7 | 210.0 | 188.3 |
| 1381 | 213.4 | 218.7 | 260.7 | 151.2 | 195.5 | 226.0 | 201.2 | 246.7 | 223.1 |
| 1382 | 246.8 | 253.3 | 272.9 | 157.7 | 216.4 | 266.7 | 236.3 | 289.5 | 266.8 |
| 1383 | 288.3 | 298.6 | 334.3 | 170.6 | 248.2 | 315.1 | 280.2 | 335.9 | 304.7 |
| 1383: | | | | | | | | | |
| Shahrivar | 285.6 | 298.6 | 333.6 | 170.5 | 243.8 | 317.4 | 280.5 | 335.9 | 298.4 |
| Mehr | 291.1 | 302.8 | 335.1 | 170.5 | 249.2 | 318.9 | 284.9 | 339.0 | 309.0 |
| Aban | 294.1 | 305.4 | 355.0 | 170.5 | 252.6 | 319.3 | 288.3 | 340.8 | 309.7 |
| Azar | 297.6 | 306.1 | 357.5 | 172.7 | 257.5 | 319.8 | 291.5 | 344.6 | 310.0 |
| Dey | 300.6 | 311.1 | 349.2 | 174.7 | 258.4 | 319.0 | 291.5 | 348.0 | 320.1 |
| Bahman | 303.2 | 316.1 | 406.9 | 179.9 | 260.4 | 318.6 | 293.3 | 349.5 | 320.2 |
| Esfand | 305.2 | 317.8 | 367.4 | 179.9 | 262.4 | 318.2 | 298.7 | 353.1 | 325.0 |
| 1384: | | | | | | | | | |
| Farvardin | 309.3 | 321.5 | 355.8 | 180.6 | 266.4 | 318.4 | 303.2 | 360.3 | 325.8 |
| Ordibehesht | 310.9 | 323.7 | 350.4 | 179.8 | 267.1 | 317.3 | 308.7 | 362.8 | 325.5 |
| Khordad | 311.3 | 320.1 | 370.1 | 182.5 | 266.3 | 318.6 | 313.9 | 367.5 | 327.1 |
| Tir | 311.3 | 311.1 | 389.3 | 182.4 | 266.1 | 319.0 | 316.4 | 372.6 | 339.2 |
| Mordad | 310.0 | 301.8 | 394.9 | 180.2 | 266.8 | 318.8 | 317.8 | 374.3 | 340.1 |
| Shahrivar | 311.7 | 302.4 | 391.2 | 198.3 | 268.5 | 319.0 | 319.8 | 380.4 | 340.4 |

Table 2 (continued)

| Description Period | General Index | Major Groups | | | | | Special Groups | | |
|-----------------------|------------------|-----------------------------|---|-----------|------------------------------|--|---|--|----------|
| | | Financial Intermediation | Real Estate, Renting and Business Activities | Education | Health and Social Work | Other Community Social and Personal Service Activities | Agriculture, Animal Husbandry, Forestry and Fishing | Mining and Quarrying, Manufacturing and Electricity, Gas and Water Supply | Services |
| 1370 | 22.1 | 61.8 | 24.4 | 19.8 | 14.3 | | 23.0 | 20.5 | 24.6 |
| 1371 | 28.2 | 69.0 | 30.4 | 28.2 | 20.4 | | 29.2 | 26.4 | 30.8 |
| 1372 | 34.9 | 77.0 | 36.4 | 41.2 | 27.6 | | 35.8 | 33.3 | 37.6 |
| 1373 | 46.4 | 77.4 | 44.4 | 58.1 | 38.0 | | 46.9 | 46.2 | 46.3 |
| 1374 | 68.5 | 99.2 | 56.8 | 74.1 | 53.5 | | 74.1 | 69.1 | 61.6 |
| 1375 | 86.5 | 99.6 | 76.5 | 94.5 | 76.1 | | 87.8 | 89.0 | 80.0 |
| 1376 | 100.0 | 100.0 | 100.0 | 100.0 | 100.0 | 100.0 | 100.0 | 100.0 | 100.0 |
| 1377 | 118.7 | 100.2 | 119.3 | 110.4 | 122.7 | 118.0 | 122.7 | 117.7 | 117.2 |
| 1378 | 145.9 | 120.1 | 139.2 | 132.0 | 153.6 | 141.8 | 152.7 | 146.2 | 139.7 |
| 1379 | 169.6 | 156.6 | 164.4 | 168.9 | 183.7 | 170.8 | 180.1 | 169.0 | 162.0 |
| 1380 | 188.1 | 267.7 | 195.8 | 224.2 | 213.7 | 216.5 | 195.2 | 178.0 | 199.4 |
| 1381 | 213.4 | 370.3 | 234.1 | 275.9 | 251.4 | 242.0 | 219.4 | 195.7 | 238.2 |
| 1382 | 246.8 | 598.1 | 278.8 | 333.6 | 295.5 | 302.9 | 253.7 | 217.1 | 291.1 |
| 1383 | 288.3 | 801.4 | 331.7 | 409.9 | 350.9 | 357.6 | 299.2 | 249.2 | 345.2 |
| 1383 : | | | | | | | | | |
| Shahrivar | 285.6 | 822.4 | 330.2 | 376.6 | 354.2 | 351.2 | 299.2 | 245.1 | 342.3 |
| Mehr | 291.1 | 806.2 | 333.7 | 444.2 | 356.4 | 364.2 | 303.4 | 250.3 | 349.5 |
| Aban | 294.1 | 829.9 | 337.1 | 445.0 | 358.1 | 365.3 | 306.3 | 253.5 | 352.3 |
| Azar | 297.6 | 845.6 | 343.0 | 445.0 | 361.9 | 369.9 | 307.0 | 258.1 | 356.1 |
| Dey | 300.6 | 845.7 | 346.8 | 445.1 | 362.0 | 371.2 | 311.7 | 259.0 | 361.5 |
| Bahman | 303.2 | 829.2 | 349.9 | 445.8 | 363.8 | 372.5 | 317.7 | 261.0 | 362.4 |
| Esfand | 305.2 | 812.9 | 353.4 | 445.8 | 366.3 | 374.9 | 318.7 | 262.9 | 365.3 |
| 1384 : | | | | | | | | | |
| Farvardin | 309.3 | 860.9 | 357.6 | 445.8 | 373.0 | 382.6 | 322.1 | 266.7 | 370.5 |
| Ordibehesht | 310.9 | 857.8 | 361.7 | 445.8 | 386.9 | 386.7 | 324.2 | 267.3 | 373.3 |
| Khordad | 311.3 | 878.2 | 365.9 | 445.8 | 404.1 | 398.5 | 321.0 | 266.6 | 378.6 |
| Tir | 311.3 | 875.8 | 370.0 | 445.9 | 416.2 | 401.0 | 312.5 | 266.5 | 385.9 |
| Mordad | 310.0 | 858.6 | 374.1 | 447.5 | 422.2 | 401.9 | 303.4 | 267.1 | 387.7 |
| Shahrivar | 311.7 | 849.2 | 378.3 | 450.0 | 428.7 | 401.5 | 304.0 | 269.1 | 389.8 |