



Central Bank of the Islamic Republic of Iran
General Directorate of Economic Statistics

Producer Price Index in Iran

Shahrivar 1389

(August 23 - September 22, 2010)

(1383 = 100)

Economic Statistics

Department

www.cbi.ir

Mehr 1389

(October 2010)

IN THE NAME OF GOD

Summary Results of the Producer Price Index in Iran

Shahrivar 1389

(1383 = 100)

increase



no change or virtually unchanged



decrease



Groups	Percent change compared to			
	previous month		similar month of the previous year	
General Index	0.5		11.2	
Major Groups:				
1- Agriculture, Hunting and Forestry	1.9		13.6	
2- Fishing	5.1		14.7	
3- Manufacturing	1.9		10.6	
4- Hotels and Restaurants	0.9		19.2	
5- Transport, Storage and Communications	0.1		5.1	
6- Education	0.4		14.6	
7- Health and Social Work	1.2		19.6	
8- Other Community, Social and Personal Service Activities	0.8		21.0	
Special Groups:				
1- Agriculture, Hunting, Forestry and Fishing	1.9		13.7	
2- Manufacturing	1.9		10.6	
3- Services	0.4		10.4	

Producer Price Index in Iran

Shahrivar 1389

(1383 = 100)

The Producer Price Index (PPI) went up 0.5 percent in Shahrivar 1389. The index level of 200.0 was 11.2 percent higher than in Shahrivar 1388.

For the first six months of 1389, the Producer Price Index rose 10.3 percent, compared to the similar period in 1388.

The Producer Price Index has advanced 8.4 percent over the last twelve months.

In Shahrivar, the agriculture, hunting and forestry group index went down 1.9 percent, which was mainly attributed to the decrease in the indices for growing of vegetables, horticultural specialties and nursery products, fruits with seeds, fruits with tiny pits, poultry and egg. In this group, the prices for cereals, lucerne, corn, sainfoin, half tropical fruits, fresh nuts and honey moved up.

The fall in the index for Persian Gulf fish principally caused 5.1 percent decrease in the group index for fishing.

As a result of rising in the indices for soya oilcake, macaroni and pasta, carbonated drink, industrial carbon black, exported manufacture of chemicals products, urea, low density polyethylene, polystyrene, PVC, manufacture of basic iron and steel, copper wire, construction machinery and telecommunications cable, the manufacturing group index moved up 1.9

percent. In this group, the prices for dried nuts and fruits, sugar, oil cuts and propylene went down.

The hotels and restaurants group index rose 0.9 percent.

The transport, storage and communications group index and the education group index moved up 0.1 percent and 0.4 percent, respectively.

The 1.2 percent rise in the group index for health and social work was mostly due to the increase in the index for hospital activities.

The other community, social and personal service activities group index increased 0.8 percent.

Producer Price Index in Iran (1383=100)

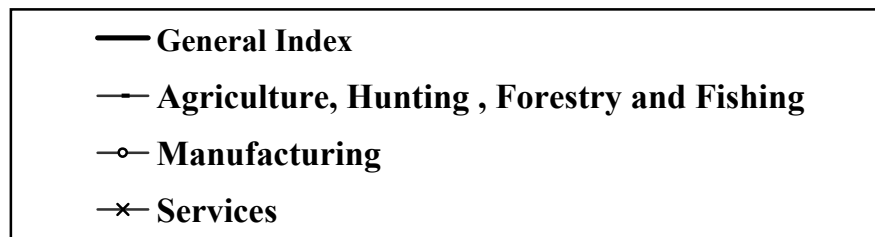
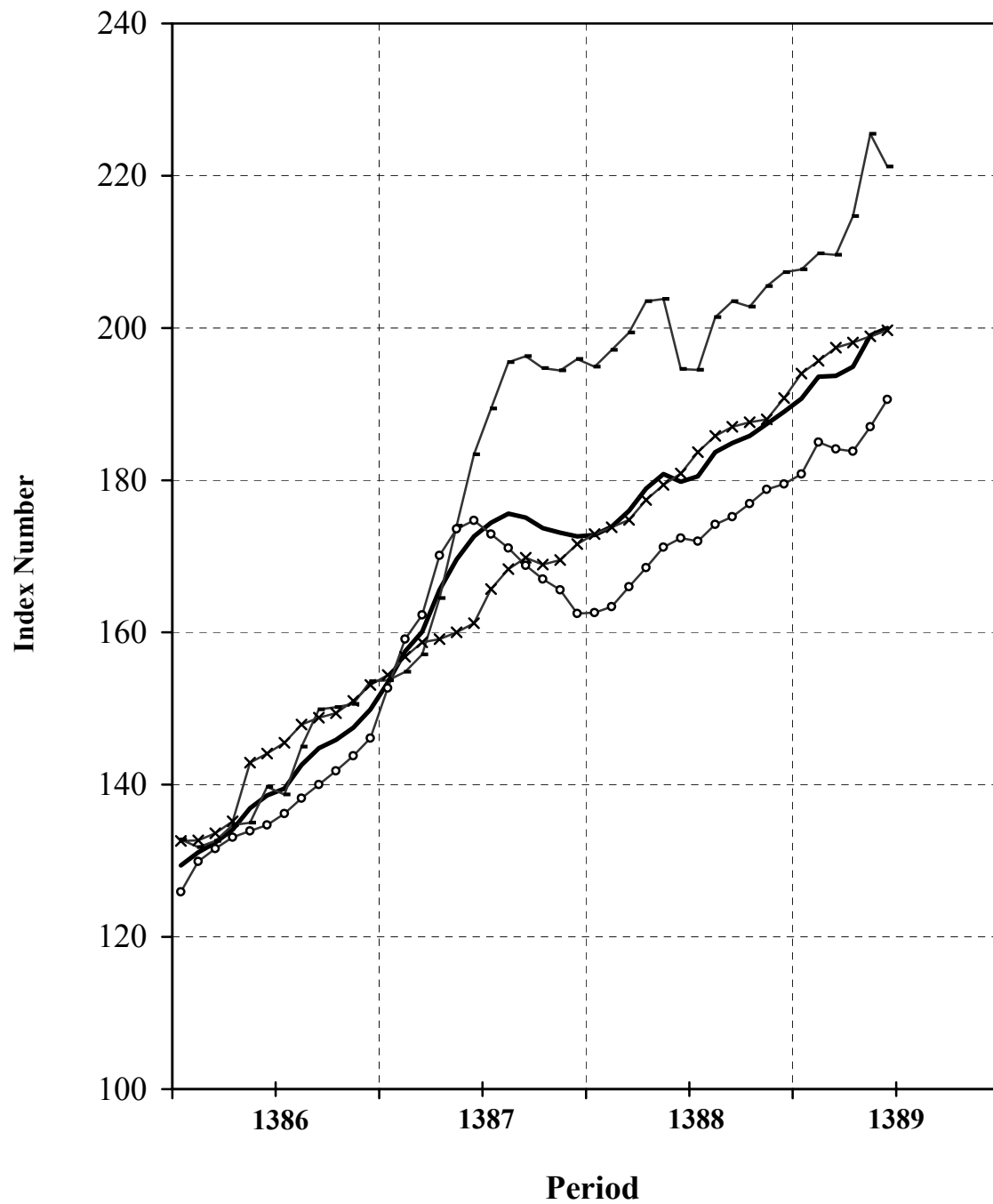


Table 1
Producer Price Index in Iran
Index Numbers and Their Percent Changes
Shahrivar 1389
(1383 = 100)

Description	Base Year Weight	Index Number in Shahrivar 1389	Percent Change			
			Shahrivar 1389 compared to		Shahrivar 1388 compared to	
			previous month	similar month of the previous year	previous month	similar month of the previous year
General Index	100.00	200.0	0.5	11.2	-0.6	4.2
Major Groups and Selected Sub Groups:*						
1-Agriculture, Hunting and Forestry	21.35	220.6	-1.9	13.6	-4.6	5.8
Growing of crops; market gardening; horticulture	15.53	222.7	-2.4	11.6	-5.7	4.7
Growing of cereals and other crops n.e.c.	7.65	216.2	2.6	8.0	-0.3	2.0
Cereals	4.85	210.5	3.4	8.4	-0.4	-4.0
Forage plant	1.25	246.4	1.4	1.1	0.0	9.6
Industrial plant	1.18	187.3	1.4	18.8	-0.1	22.8
Pulses	0.37	280.9	1.6	5.9	-0.7	7.9
Growing of vegetables, horticultural specialties and nursery products	2.47	238.4	-6.5	36.1	-10.5	-5.5
Patch vegetables	0.94	190.3	4.5	48.1	-33.0	-22.4
Root vegetables	0.75	220.7	-1.7	29.1	9.2	18.8
Garden vegetables	0.57	246.1	-24.6	51.9	-3.2	-23.3
Leaf vegetables	0.13	313.0	-0.7	119.2	4.3	-19.8
Other products	0.09	746.5	0.0	-12.3	0.0	43.1
Growing of fruit, nuts, beverage and spice crops	5.40	224.8	-6.6	7.1	-10.3	13.3
Half tropical fruits	1.81	291.4	2.3	18.3	10.0	11.3
Fruits with seeds	1.34	155.3	-22.1	-3.0	-18.6	-3.7
Fruits with pits	0.88	177.1	2.6	-5.2	2.9	92.3
Fresh nuts	0.77	194.3	8.4	15.8	-4.6	10.3
Fruits with tiny pits	0.61	286.3	-23.4	-3.4	-40.1	3.2
Farming of animals	5.82	215.2	-0.3	19.6	-1.3	9.2
Farming of cattle, sheep and goats	2.16	279.2	1.0	35.9	4.1	36.3
Production of raw milk	1.86	191.0	0.3	4.1	-1.0	10.2
Farming of birds	1.13	163.5	-4.0	25.2	-16.0	-22.7
Other animal farming	0.67	162.8	-2.9	-4.7	0.4	-14.0
2- Fishing	0.63	238.2	-5.1	14.7	-1.2	17.0
Persian Gulf fish	0.35	272.3	-8.3	19.5	-1.9	14.5
Caspian Sea fish	0.06	173.9	0.0	42.2	0.0	52.3
Aquaculture	0.22	201.5	1.4	1.4	0.0	17.1
3- Manufacturing	48.06	190.6	1.9	10.6	0.7	-1.3
Manufacture of food products and beverages	5.84	204.6	5.4	14.9	0.8	4.2
Production, processing and preservation of meat, fish, fruit, vegetables, oils and fats	1.83	186.9	12.5	13.1	1.2	3.0
Manufacture of dairy products	0.89	164.0	-0.7	11.6	0.1	-5.8

*As a few of subgroups are not mentioned in the table, therefore the total weights of subgroups in a few cases do not add up to the total weights of major groups.

Table 1 (continued)

Description	Base Year Weight	Index Number in Shahrivar 1389	Percent Change			
			Shahrivar 1389 compared to		Shahrivar 1388 compared to	
			previous month	similar month of the previous year	previous month	similar month of the previous year
Manufacture of grain mill products, starches and starch products, and prepared animal feeds	1.02	244.3	6.5	-0.7	0.1	5.3
Manufacture of other food products	1.51	223.2	0.5	31.9	2.1	7.6
Manufacture of beverages	0.59	204.3	5.6	20.1	0.0	11.1
Manufacture of tobacco products	0.15	119.3	1.6	4.8	0.2	4.4
Manufacture of textiles	1.97	190.5	0.0	12.4	1.6	6.5
Spinning, weaving and finishing of textiles	1.11	154.6	0.1	11.2	3.4	-0.3
Manufacture of other textiles	0.83	238.6	-0.1	13.5	0.1	13.3
Manufacture of knitted and crocheted fabrics and articles	0.02	183.6	0.3	3.6	0.1	13.7
Manufacture of wearing apparel; dressing and dyeing of fur	0.08	176.7	2.5	10.9	0.0	3.4
Tanning and dressing of leather; manufacture of luggage, handbags, saddle, harness and footwear	0.19	195.3	1.9	8.3	0.3	6.1
Manufacture of wood and of products of wood and cork, except furniture; manufacture of articles of straw and plaiting materials	0.13	159.0	0.7	6.2	0.0	-5.5
Manufacture of paper and paper products	0.54	189.2	0.1	13.9	-0.2	-12.9
Manufacture of coke, refined petroleum products	5.60	227.4	-1.3	6.3	0.8	22.9
Manufacture of chemicals and chemical products	4.78	208.5	2.3	16.5	-0.8	-14.9
Manufacture of rubber and plastics products	1.24	208.3	0.1	4.7	0.0	10.2
Manufacture of other non-metallic mineral products	3.02	170.0	0.6	2.3	0.2	1.5
Manufacture of basic metals	6.84	238.6	5.0	20.9	2.7	-18.0
Manufacture of fabricated metal products, except machinery and equipment	0.73	213.3	1.0	6.6	0.3	-9.3
Manufacture of machinery for mining, quarrying and construction	0.24	200.2	5.5	12.8	1.1	4.7
Manufacture of radio, television and communication equipment and apparatus	0.41	100.6	0.0	3.0	0.5	-8.9
Manufacture of medical, precision and optical instruments, watches and clocks	0.10	164.6	0.2	-5.6	0.0	13.2
Manufacture of motor vehicles	9.17	133.7	1.3	3.7	0.5	3.4
Manufacture of other transport equipment	0.30	128.2	-0.8	8.8	0.0	-11.6
4- Hotels and Restaurants	0.88	265.8	0.9	19.2	0.5	16.7
Hotels and other provision of short-stay accommodation	0.26	304.1	0.2	21.9	1.0	21.6
Restaurants and canteens	0.62	249.6	1.2	17.9	0.3	14.4
5- Transport, Storage and Communications	21.04	165.6	0.1	5.1	0.1	7.7
Land transport	17.57	174.7	0.1	6.3	0.1	7.1
Air transport	1.03	153.9	0.0	-8.0	0.0	25.8
Post and telecommunications	2.42	104.7	0.0	0.7	0.0	2.9
6- Education	2.43	236.7	0.4	14.6	0.4	15.1
7- Health and Social Work	3.95	296.5	1.2	19.6	3.5	22.2
8- Other Community, Social and Personal Service Activities	1.66	311.7	0.8	21.0	1.1	23.8
Special Groups:						
1- Agriculture, Hunting, Forestry and Fishing	21.98	221.2	-1.9	13.7	-4.5	6.1
2- Manufacturing	48.06	190.6	1.9	10.6	0.7	-1.3
3- Services	29.96	199.7	0.4	10.4	0.8	12.2

Table 2
Producer Price Index in Iran
General and Major Groups Index Numbers
(1383=100)

Description Period	General Index	Major Groups								Special Groups		
		Agriculture, Hunting and Forestry	Fishing	Manufacturing	Hotels and Restaurants	Transport, Storage and Communications	Education	Health and Social Work	Other Community, Social and Personal Service Activities	Agriculture, Hunting, Forestry and Fishing	Manufacturing	Services
1376	34.7	33.5	29.9	40.3	29.8	32.8	24.4	28.5	28.0	33.4	40.1	29.0
1377	41.2	41.1	38.3	47.1	37.4	37.8	26.9	35.0	33.0	41.0	47.2	34.0
1378	50.6	51.1	45.6	58.7	46.7	45.3	32.2	43.8	39.7	51.0	58.7	40.5
1379	58.8	60.3	57.1	67.9	55.1	49.9	41.2	52.4	47.8	60.2	67.8	46.9
1380	65.3	65.3	63.4	71.4	62.5	61.8	54.7	60.9	60.5	65.2	71.4	57.8
1381	74.0	73.2	78.0	78.8	73.4	73.2	67.3	71.6	67.7	73.3	78.5	69.0
1382	85.6	84.8	81.6	87.2	86.2	87.6	81.4	84.2	84.7	84.8	87.1	84.3
1383	100.0	100.0	100.0	100.0	100.0	100.0	100.0	100.0	100.0	100.0	100.0	100.0
1384	108.8	103.2	115.7	108.2	112.1	111.9	118.7	118.6	115.1	103.6	108.2	113.5
1385	121.4	116.6	127.3	120.5	125.3	121.5	143.4	136.9	132.6	116.9	120.5	126.0
1386	139.5	141.2	142.4	136.3	148.0	136.2	163.5	162.9	158.1	141.2	136.3	143.5
1387	168.6	179.7	173.3	166.7	192.1	149.1	187.5	201.2	209.7	179.5	166.7	163.7
1388	181.1	200.6	203.8	171.7	225.8	158.1	217.4	243.7	260.2	200.7	171.7	181.8
1388												
Shahrivar	179.8	194.2	207.6	172.4	222.9	157.5	206.6	248.0	257.7	194.6	172.4	180.9
Mehr	180.5	194.4	200.7	172.0	227.5	159.3	213.1	252.2	263.9	194.5	172.0	183.7
Aban	183.7	201.2	207.8	174.2	230.1	159.5	229.7	254.7	266.8	201.4	174.2	185.8
Azar	184.9	203.6	200.4	175.2	232.3	159.7	233.7	257.8	270.6	203.5	175.2	187.0
Dey	185.8	202.9	201.5	176.9	234.0	160.0	233.8	260.2	271.4	202.8	176.9	187.6
Bahman	187.4	205.5	207.0	178.8	236.8	159.8	233.8	261.8	275.7	205.5	178.8	188.0
Esfand	189.0	207.0	218.7	179.5	244.9	162.4	233.9	265.3	281.0	207.3	179.5	190.8
1389	187.4	205.5	207.0	178.8	236.8	159.8	233.8	261.8	275.7	205.5	178.8	188.0
Farvardin	190.7	207.9	200.9	180.8	250.9	165.1	234.0	268.5	293.8	207.7	180.8	194.0
Ordibehesht	193.6	209.8	210.1	185.0	255.4	165.3	234.3	277.0	298.7	209.8	185.0	195.7
Khordad	193.7	208.9	232.3	184.1	259.1	165.7	234.7	285.3	303.0	209.6	184.1	197.4
Tir	194.9	213.7	249.3	183.8	260.6	165.4	235.4	289.3	306.8	214.7	183.8	198.1
Mordad	199.0	224.8	251.1	187.0	263.4	165.5	235.7	293.1	309.3	225.5	187.0	198.9
Shahrivar	200.0	220.6	238.2	190.6	265.8	165.6	236.7	296.5	311.7	221.2	190.6	199.7