



Central Bank of the Islamic Republic of Iran
General Directorate of Economic Statistics

Producer Price Index in Iran

Aban 1389

(October 23 - November 21, 2010)

(1383 = 100)

Economic Statistics

Department

www.cbi.ir

Azar 1389

(December 2010)

IN THE NAME OF GOD

Summary Results of the Producer Price Index in Iran

Aban 1389

(1383 = 100)

increase



no change or virtually unchanged



decrease



Groups	Percent change compared to			
	previous month		similar month of the previous year	
General Index	1.5		12.6	
Major Groups:				
1- Agriculture, Hunting and Forestry	2.6		17.0	
2- Fishing	3.2		11.5	
3- Manufacturing	1.1		11.8	
4- Hotels and Restaurants	1.6		19.4	
5- Transport, Storage and Communications	1.5		6.3	
6- Education	1.9		8.2	
7- Health and Social Work	0.8		19.0	
8- Other Community, Social and Personal Service Activities	1.2		20.8	
Special Groups:				
1- Agriculture, Hunting, Forestry and Fishing	2.4		16.9	
2- Manufacturing	1.1		11.8	
3- Services	1.4		10.4	

Producer Price Index in Iran

Aban 1389

(1383 = 100)

The Producer Price Index (PPI) went up 1.5 percent in Aban 1389. The index level of 206.8 was 12.6 percent higher than in Aban 1388.

For the first eight months of 1389, the Producer Price Index rose 11.0 percent, compared to the similar period in 1388.

The Producer Price Index has advanced 9.8 percent over the last twelve months.

In Aban, the agriculture, hunting and forestry group index went up 2.6 percent, which was mainly attributed to the increase in the indices for corn, cotton, pulses, growing of vegetables, horticultural specialties and nursery products, fruits with seeds, fresh nuts, fruits with tiny pits and farming of cattle, sheep and goat. In this group, the price for egg moved down.

The fall in the index for Persian Gulf fish principally caused 3.2 percent decrease in the group index for fishing. In this group, the price of Caspian Sea fish went up.

As a result of rising in the indices for meat products, walnut, vegetable oil, soya oilcake, spinning of thread, tanning and dressing of leather, exported methanol, low density polyethylene, iron slab, iron sheet, copper wire, aluminum ingot, copper cable, bus, shock absorber and motorcycle, the

manufacturing group index moved up 1.1 percent. In this group, the prices for sugar, polystyrene, iron round bar, metal can and water, electric and gas meters went down.

The advance in the price of restaurants and canteens mostly caused 1.6 percent increase in the group index of hotels and restaurants.

The transport, storage and communications group index moved up 1.5 percent, which was mainly attributed to the increase in the indices for urban minibus fare, freight transport by van and passenger transport by air (domestic).

The education group index increased 1.9 percent which was principally due to the rise in the index for school's and out- of -school's tuition fees.

The health and social work group index and the other community, social and personal service activities group index moved up 0.8 percent and 1.2 percent, respectively.

Producer Price Index in Iran (1383=100)

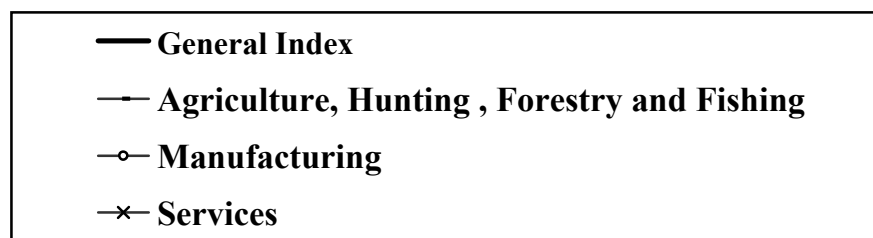
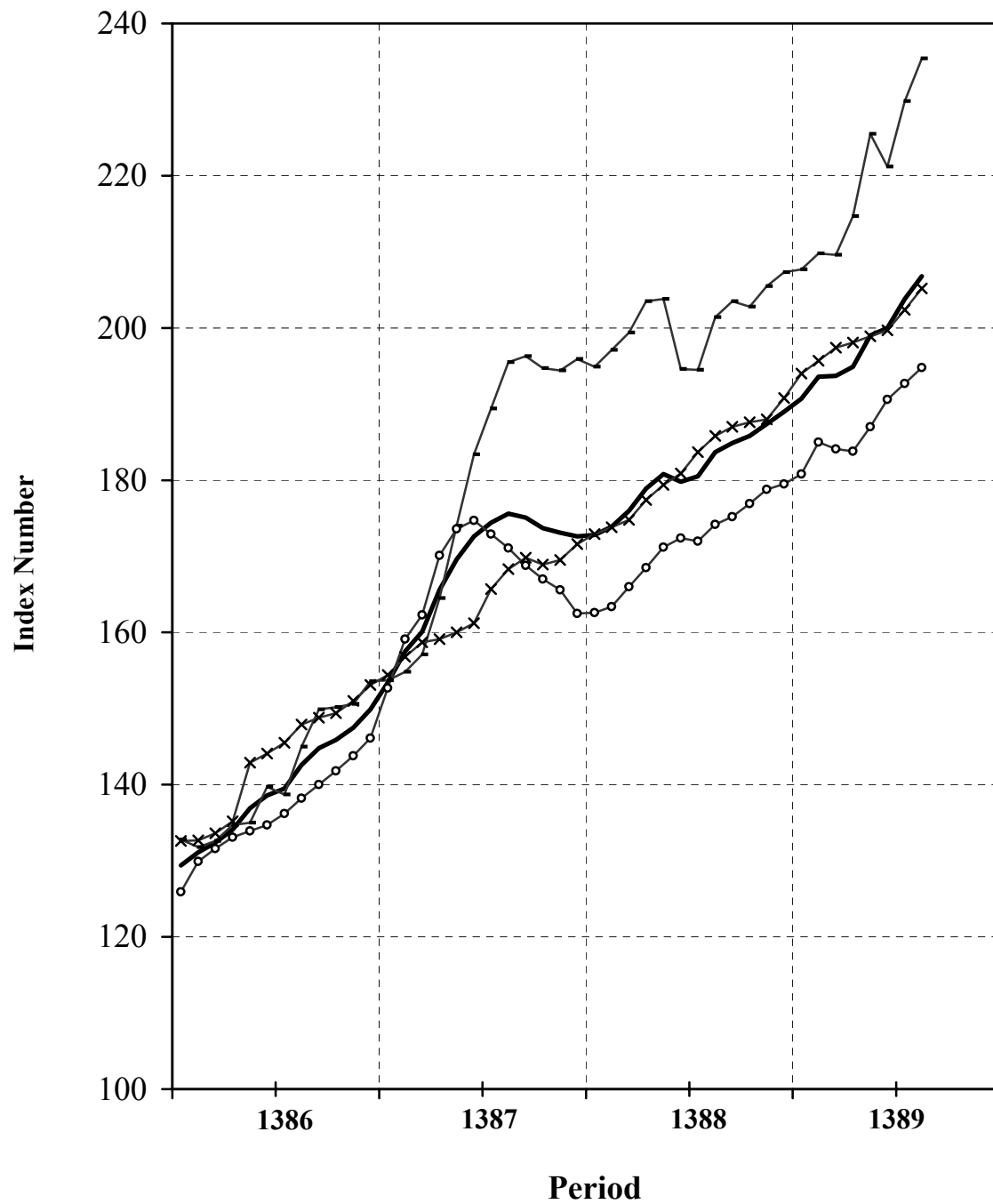


Table 1
Producer Price Index in Iran
Index Numbers and Their Percent Changes
 Aban 1389
 (1383 = 100)

Description	Base Year Weight	Index Number in Aban 1389	Percent Change			
			Aban 1389 compared to		Aban 1388 compared to	
			previous month	similar month of the previous year	previous month	similar month of the previous year
General Index	100.00	206.8	1.5	12.6	1.8	4.6
Major Groups and Selected Subgroups:						
1-Agriculture, Hunting and Forestry	21.35	235.5	2.6	17.0	3.5	2.7
Growing of crops; market gardening; horticulture	15.53	241.6	3.2	18.5	2.6	-1.1
Growing of cereals and other crops n.e.c.	7.65	227.6	1.5	12.4	-0.1	0.0
Cereals	4.85	213.0	0.6	9.2	-0.6	-5.0
Forage plant	1.25	264.7	0.1	6.5	0.4	6.8
Industrial plant	1.18	221.5	6.7	34.4	0.7	19.8
Pulses	0.37	311.7	3.0	17.8	-0.1	-2.3
Growing of vegetables, horticultural specialties and nursery products	2.47	276.3	2.9	41.9	9.6	-3.9
Patch vegetables	0.94	226.1	6.3	51.5	15.6	-11.1
Root vegetables	0.75	294.0	9.1	35.4	13.4	52.1
Garden vegetables	0.57	302.9	9.0	94.5	7.5	-35.8
Leaf vegetables	0.13	304.8	0.2	114.0	2.4	-23.3
Other products	0.09	446.8	-40.1	-45.8	-3.1	-3.6
Growing of fruit, nuts, beverage and spice crops	5.40	245.7	5.5	16.9	3.5	-1.5
Half tropical fruits	1.81	276.2	-1.1	6.9	1.8	11.3
Fruits with seeds	1.34	164.5	9.0	27.0	-4.4	-29.5
Fruits with pits	0.88	182.7	0.0	-5.0	-0.3	97.8
Fresh nuts	0.77	278.6	11.9	54.5	7.8	5.9
Fruits with tiny pits	0.61	381.9	17.5	24.7	18.5	-30.8
Farming of animals	5.82	219.1	1.0	12.9	6.4	15.3
Farming of cattle, sheep and goats	2.16	285.8	3.6	32.4	3.2	41.5
Production of raw milk	1.86	192.5	-0.1	-0.5	5.5	3.4
Farming of birds	1.13	151.9	-1.7	8.0	11.1	-2.9
Other animal farming	0.67	190.9	-4.5	-11.3	14.3	3.9
2- Fishing	0.63	231.7	-3.2	11.5	3.5	15.3
Persian Gulf fish	0.35	244.5	-9.8	19.4	1.8	7.6
Caspian Sea fish	0.06	266.5	39.0	3.3	25.6	60.3
Aquaculture	0.22	201.5	0.0	1.4	0.0	17.1
3- Manufacturing	48.06	194.8	1.1	11.8	1.3	1.8
Manufacture of food products and beverages	5.84	209.0	2.0	18.1	1.0	2.2
Production, processing and preservation of meat, fish, fruit, vegetables, oils and fats	1.83	196.7	5.4	25.2	1.5	-5.0
Manufacture of dairy products	0.89	164.7	0.1	9.5	1.2	1.1

Table 1 (continued)

Description	Base Year Weight	Index Number in Aban 1389	Percent Change			
			Aban 1389 compared to		Aban 1388 compared to	
			previous month	similar month of the previous year	previous month	similar month of the previous year
Manufacture of grain mill products, starches and starch products, and prepared animal feeds	1.02	248.7	3.5	2.7	0.2	2.5
Manufacture of other food products	1.51	225.1	-1.1	26.2	3.1	10.3
Manufacture of beverages	0.59	204.3	0.0	25.2	-4.2	5.4
Manufacture of tobacco products	0.15	121.0	0.6	6.1	1.0	4.6
Manufacture of textiles	1.97	198.4	2.1	15.5	0.6	8.1
Spinning, weaving and finishing of textiles	1.11	167.2	4.4	18.2	0.7	2.4
Manufacture of other textiles	0.83	240.6	0.1	13.4	0.5	13.8
Manufacture of knitted and crocheted fabrics and articles	0.02	186.1	0.8	4.6	0.2	6.4
Manufacture of wearing apparel; dressing and dyeing of fur	0.08	177.4	0.1	7.9	2.9	5.7
Tanning and dressing of leather; manufacture of luggage, handbags, saddle, harness and footwear	0.19	203.7	3.1	12.1	0.6	1.8
Manufacture of wood and of products of wood and cork, except furniture; manufacture of articles of straw and plaiting materials	0.13	161.9	0.2	8.0	0.1	-5.2
Manufacture of paper and paper products	0.54	196.3	0.7	17.9	0.2	-13.8
Manufacture of coke, refined petroleum products	5.60	229.3	0.4	5.2	0.5	10.5
Manufacture of chemicals and chemical products	4.78	220.2	2.3	20.2	2.2	0.4
Manufacture of rubber and plastics products	1.24	208.1	-1.9	4.6	0.1	6.8
Manufacture of other non-metallic mineral products	3.02	170.4	0.2	1.6	1.0	2.8
Manufacture of basic metals	6.84	243.1	0.6	22.5	1.1	-6.1
Manufacture of fabricated metal products, except machinery and equipment	0.73	213.6	-0.8	8.0	-0.5	-11.0
Manufacture of machinery for mining, quarrying and construction	0.24	201.7	0.0	13.6	0.0	1.1
Manufacture of radio, television and communication equipment and apparatus	0.41	100.1	0.6	2.2	0.2	-9.8
Manufacture of medical, precision and optical instruments, watches and clocks	0.10	154.0	-6.3	-11.0	0.0	12.6
Manufacture of motor vehicles	9.17	134.2	0.4	3.6	0.9	2.6
Manufacture of other transport equipment	0.30	158.2	23.4	35.1	-0.6	-4.0
4- Hotels and Restaurants	0.88	274.7	1.6	19.4	1.1	16.6
Hotels and other provision of short-stay accommodation	0.26	309.6	1.2	23.9	0.1	20.9
Restaurants and canteens	0.62	260.0	1.8	17.2	1.6	14.7
5- Transport, Storage and Communications	21.04	169.6	1.5	6.3	0.1	4.5
Land transport	17.57	177.8	1.4	6.7	0.2	4.7
Air transport	1.03	183.5	4.9	9.9	-0.2	4.2
Post and telecommunications	2.42	104.7	0.0	0.5	0.2	1.6
6- Education	2.43	248.5	1.9	8.2	7.8	19.3
7- Health and Social Work	3.95	303.1	0.8	19.0	1.0	21.7
8- Other Community, Social and Personal Service Activities	1.66	322.3	1.2	20.8	1.1	22.4
Special Groups:						
1- Agriculture, Hunting, Forestry and Fishing	21.98	235.4	2.4	16.9	3.5	3.0
2- Manufacturing	48.06	194.8	1.1	11.8	1.3	1.8
3- Services	29.96	205.2	1.4	10.4	1.1	10.4

Table 2
Producer Price Index in Iran
General and Major Groups Index Numbers
(1383=100)

Description Period	General Index	Major Groups								Special Groups		
		Agriculture, Hunting and Forestry	Fishing	Manufacturing	Hotels and Restaurants	Transport, Storage and Communications	Education	Health and Social Work	Other Community, Social and Personal Service Activities	Agriculture, Hunting, Forestry and Fishing	Manufacturing	Services
1376	34.7	33.5	29.9	40.3	29.8	32.8	24.4	28.5	28.0	33.4	40.1	29.0
1377	41.2	41.1	38.3	47.1	37.4	37.8	26.9	35.0	33.0	41.0	47.2	34.0
1378	50.6	51.1	45.6	58.7	46.7	45.3	32.2	43.8	39.7	51.0	58.7	40.5
1379	58.8	60.3	57.1	67.9	55.1	49.9	41.2	52.4	47.8	60.2	67.8	46.9
1380	65.3	65.3	63.4	71.4	62.5	61.8	54.7	60.9	60.5	65.2	71.4	57.8
1381	74.0	73.2	78.0	78.8	73.4	73.2	67.3	71.6	67.7	73.3	78.5	69.0
1382	85.6	84.8	81.6	87.2	86.2	87.6	81.4	84.2	84.7	84.8	87.1	84.3
1383	100.0	100.0	100.0	100.0	100.0	100.0	100.0	100.0	100.0	100.0	100.0	100.0
1384	108.8	103.2	115.7	108.2	112.1	111.9	118.7	118.6	115.1	103.6	108.2	113.5
1385	121.4	116.6	127.3	120.5	125.3	121.5	143.4	136.9	132.6	116.9	120.5	126.0
1386	139.5	141.2	142.4	136.3	148.0	136.2	163.5	162.9	158.1	141.2	136.3	143.5
1387	168.6	179.7	173.3	166.7	192.1	149.1	187.5	201.2	209.7	179.5	166.7	163.7
1388	181.1	200.6	203.8	171.7	225.8	158.1	217.4	243.7	260.2	200.7	171.7	181.8
1388												
Aban	183.7	201.2	207.8	174.2	230.1	159.5	229.7	254.7	266.8	201.4	174.2	185.8
Azar	184.9	203.6	200.4	175.2	232.3	159.7	233.7	257.8	270.6	203.5	175.2	187.0
Dey	185.8	202.9	201.5	176.9	234.0	160.0	233.8	260.2	271.4	202.8	176.9	187.6
Bahman	187.4	205.5	207.0	178.8	236.8	159.8	233.8	261.8	275.7	205.5	178.8	188.0
Esfand	189.0	207.0	218.7	179.5	244.9	162.4	233.9	265.3	281.0	207.3	179.5	190.8
1389	187.4	205.5	207.0	178.8	236.8	159.8	233.8	261.8	275.7	205.5	178.8	188.0
Farvardin	190.7	207.9	200.9	180.8	250.9	165.1	234.0	268.5	293.8	207.7	180.8	194.0
Ordibehesht	193.6	209.8	210.1	185.0	255.4	165.3	234.3	277.0	298.7	209.8	185.0	195.7
Khordad	193.7	208.9	232.3	184.1	259.1	165.7	234.7	285.3	303.0	209.6	184.1	197.4
Tir	194.9	213.7	249.3	183.8	260.6	165.4	235.4	289.3	306.8	214.7	183.8	198.1
Mordad	199.0	224.8	251.1	187.0	263.4	165.5	235.7	293.1	309.3	225.5	187.0	198.9
Shahrivar	200.0	220.6	238.2	190.6	265.8	165.6	236.7	296.5	311.7	221.2	190.6	199.7
Mehr	203.8	229.5	239.3	192.7	270.3	167.1	243.9	300.7	318.6	229.8	192.7	202.4
Aban	206.8	235.5	231.7	194.8	274.7	169.6	248.5	303.1	322.3	235.4	194.8	205.2