



**Central Bank of the Islamic Republic of Iran**  
**General Directorate of Economic Statistics**

**Producer Price Index in Iran**

**Bahman 1389**

(January 21- February 19, 2011)

(1383 = 100)

**Economic Statistics**

**Department**

[www.cbi.ir](http://www.cbi.ir)

**Esfand 1389**

**(March 2011)**

*IN THE NAME OF GOD*

**Summary Results of the Producer Price Index in Iran**

Bahman 1389

(1383 = 100)

increase



no change or virtually unchanged



decrease



Groups	Percent change compared to			
	previous month		similar month of the previous year	
<b>General Index</b>	3.6		32.8	
<b>Major Groups:</b>				
1- Agriculture, Hunting and Forestry	1.2		15.7	
2- Fishing	3.0		21.6	
3- Manufacturing	6.0		54.2	
4- Hotels and Restaurants	0.7		18.7	
5- Transport, Storage and Communications	0.7		11.1	
6- Education	1.1		11.7	
7- Health and Social Work	1.0		19.9	
8- Other Community, Social and Personal Service Activities	0.5		20.3	
<b>Special Groups:</b>				
1- Agriculture, Hunting, Forestry and Fishing	1.2		15.9	
2- Manufacturing	6.0		54.2	
3- Services	0.8		13.8	

## **Producer Price Index in Iran**

**Bahman 1389**

**(1383 = 100)**

The Producer Price Index (PPI) went up 3.6 percent in Bahman 1389 following a 15.3 percent rise in Dey 1389. The index level of 248.9 was 32.8 percent higher than in Bahman 1388.

For the first eleven months of 1389, the Producer Price Index increased 14.9 percent, compared to the similar period in 1388.

The Producer Price Index has advanced 14.5 percent over the last twelve months.

In Bahman, the agriculture, hunting and forestry group index went up 1.2 percent, which was mainly attributed to the increase in the indices for half tropical fruits, poultry and egg. In this group, the price for leaf vegetables moved down.

The advance in the index for Caspian Sea fish principally caused 3.0 percent increase in the group index for fishing.

As a result of rising in the indices for oilcake, carbonated drink, gasoline, gas oil, exported paraxylene, mirror, cement pipe, copper products, aluminum ingot, copper wire, Telecommunications cable and copper cable, the manufacturing group index moved up 6.0 percent. In this group, the prices for

oil cuts, butane, iron round bar, iron bloom, iron beam, billet and automobile shock absorber went down.

The hotels and restaurants and the transport, storage and communications group index rose 0.7 percent each.

The education group index increased 1.1 percent which was principally due to the rise in the index for university's tuition fees.

The 1.0 percent advance in the group index of health and social work was mostly attributed to the increase in the index for dental services.

The other community, social and personal service activities group index moved up 0.5 percent.

# **Producer Price Index in Iran (1383=100)**

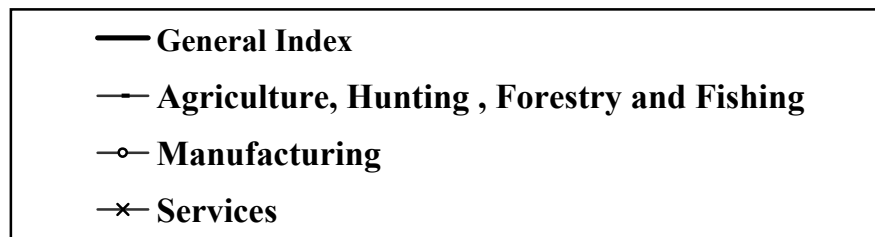
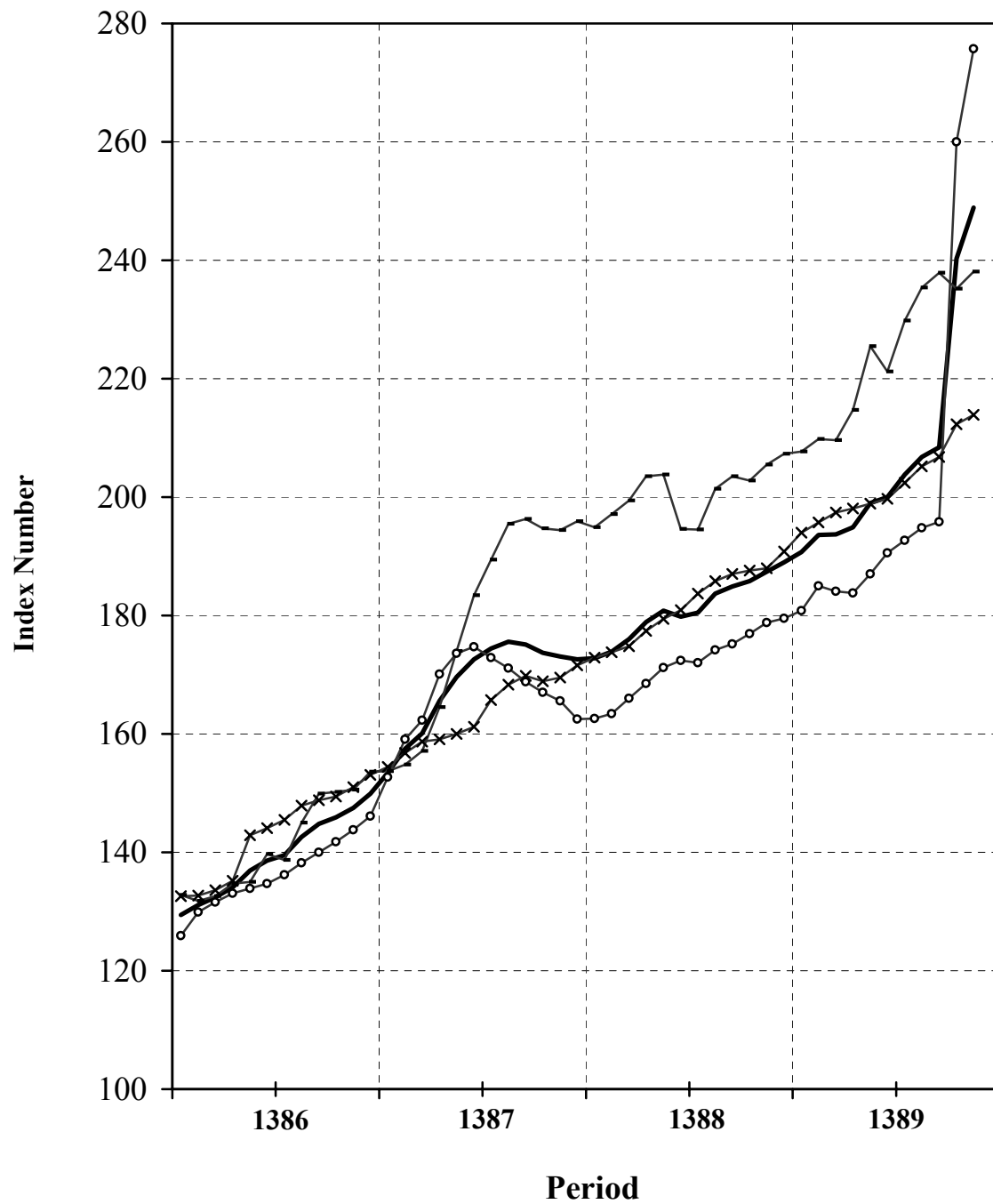


Table 1  
**Producer Price Index in Iran**  
**Index Numbers and Their Percent Changes**  
Bahman 1389  
(1383 = 100)

Description	Base Year Weight	Index Number in Bahman 1389	Percent Change			
			Bahman 1389 compared to		Bahman 1388 compared to	
			previous month	similar month of the previous year	previous month	similar month of the previous year
<b>General Index</b>	<b>100.00</b>	<b>248.9</b>	<b>3.6</b>	<b>32.8</b>	<b>0.9</b>	<b>8.3</b>
<b>Major Groups and Selected Subgroups:</b>						
<b>1-Agriculture, Hunting and Forestry</b>	<b>21.35</b>	<b>237.7</b>	<b>1.2</b>	<b>15.7</b>	<b>1.3</b>	<b>5.7</b>
Growing of crops; market gardening; horticulture	15.53	246.1	0.8	17.4	1.5	1.5
Growing of cereals and other crops n.e.c.	7.65	228.4	0.0	10.3	0.0	2.0
Cereals	4.85	214.0	0.0	8.7	0.0	-4.2
Forage plant	1.25	265.2	0.0	6.7	0.0	6.8
Industrial plant	1.18	219.3	0.0	18.3	0.2	31.3
Pulses	0.37	321.0	0.0	19.2	0.0	1.0
Growing of vegetables, horticultural specialties and nursery products	2.47	278.6	-0.5	41.6	1.5	-6.3
Patch vegetables	0.94	237.9	1.2	55.6	-0.9	-15.9
Root vegetables	0.75	305.7	0.2	42.1	-0.8	44.0
Garden vegetables	0.57	302.9	0.0	91.6	0.0	-34.7
Leaf vegetables	0.13	196.6	-21.2	-5.2	59.8	8.4
Other products	0.09	446.8	0.0	-40.1	0.0	-12.3
Growing of fruit, nuts, beverage and spice crops	5.40	256.3	2.5	16.9	3.6	4.5
Half tropical fruits	1.81	307.7	6.4	7.7	8.7	30.3
Fruits with seeds	1.34	164.5	0.0	26.9	0.0	-29.5
Fruits with pits	0.88	182.7	0.0	-5.0	0.0	97.8
Fresh nuts	0.77	278.6	0.0	54.5	0.0	2.1
Fruits with tiny pits	0.61	381.9	0.0	24.7	0.0	-30.8
Farming of animals	5.82	215.3	2.4	10.8	0.6	19.6
Farming of cattle, sheep and goats	2.16	260.1	0.2	9.4	1.3	49.5
Production of raw milk	1.86	202.0	1.5	5.8	0.1	0.4
Farming of birds	1.13	155.0	2.2	13.6	4.9	9.2
Other animal farming	0.67	209.4	15.9	29.7	-6.2	0.9
<b>2- Fishing</b>	<b>0.63</b>	<b>251.7</b>	<b>3.0</b>	<b>21.6</b>	<b>2.7</b>	<b>8.3</b>
Persian Gulf fish	0.35	269.5	-0.1	21.3	5.0	13.4
Caspian Sea fish	0.06	258.5	52.9	73.6	-2.6	9.0
Aquaculture	0.22	221.5	-1.2	11.4	0.0	0.0
<b>3- Manufacturing</b>	<b>48.06</b>	<b>275.7</b>	<b>6.0</b>	<b>54.2</b>	<b>1.1</b>	<b>8.0</b>
Manufacture of food products and beverages	5.84	253.5	1.8	40.5	0.3	4.2
Production, processing and preservation of meat, fish, fruit, vegetables, oils and fats	1.83	199.5	0.2	27.2	-0.5	-3.4
Manufacture of dairy products	0.89	165.4	0.0	7.8	0.5	2.6

Table 1 (continued)

Description	Base Year Weight	Index Number in Bahman 1389	Percent Change			
			Bahman 1389 compared to		Bahman 1388 compared to	
			previous month	similar month of the previous year	previous month	similar month of the previous year
Manufacture of grain mill products, starches and starch products, and prepared animal feeds	1.02	266.9	8.2	10.3	0.6	4.0
Manufacture of other food products	1.51	377.6	0.4	101.6	1.0	15.6
Manufacture of beverages	0.59	213.6	2.2	25.6	0.0	1.6
Manufacture of tobacco products	0.15	168.2	5.8	45.6	0.6	6.0
Manufacture of textiles	1.97	203.6	0.0	18.3	0.8	10.5
Spinning, weaving and finishing of textiles	1.11	176.3	-0.1	24.5	1.6	6.9
Manufacture of other textiles	0.83	240.5	0.0	13.1	0.1	14.1
Manufacture of knitted and crocheted fabrics and articles	0.02	188.8	0.3	5.9	-0.3	0.8
Manufacture of wearing apparel; dressing and dyeing of fur	0.08	182.8	3.7	11.2	0.0	-0.5
Tanning and dressing of leather; manufacture of luggage, handbags, saddle, harness and footwear	0.19	211.1	1.1	15.1	0.4	3.4
Manufacture of wood and of products of wood and cork, except furniture; manufacture of articles of straw and plaiting materials	0.13	161.1	-0.3	5.8	1.3	0.1
Manufacture of paper and paper products	0.54	202.2	0.6	17.8	1.1	-5.8
Manufacture of coke, refined petroleum products	5.60	862.7	17.0	282.9	2.9	20.1
Manufacture of chemicals and chemical products	4.78	222.6	0.8	9.9	2.2	28.1
Manufacture of rubber and plastics products	1.24	208.1	0.0	4.7	0.0	7.2
Manufacture of other non-metallic mineral products	3.02	173.5	1.4	5.0	0.3	0.7
Manufacture of basic metals	6.84	246.0	-0.4	22.1	0.2	2.1
Manufacture of fabricated metal products, except machinery and equipment	0.73	212.7	-0.3	6.9	1.8	-7.2
Manufacture of machinery for mining, quarrying and construction	0.24	201.7	0.0	11.0	0.0	3.5
Manufacture of radio, television and communication equipment and apparatus	0.41	93.3	0.0	-4.0	-0.7	-10.2
Manufacture of medical, precision and optical instruments, watches and clocks	0.10	160.3	3.9	-5.8	-1.7	0.2
Manufacture of motor vehicles	9.17	134.2	0.0	2.1	1.6	2.3
Manufacture of other transport equipment	0.30	156.3	-0.7	34.4	-0.3	-4.4
<b>4- Hotels and Restaurants</b>	<b>0.88</b>	<b>281.1</b>	<b>0.7</b>	<b>18.7</b>	<b>1.2</b>	<b>16.9</b>
Hotels and other provision of short-stay accommodation	0.26	311.9	0.5	22.6	1.9	21.4
Restaurants and canteens	0.62	268.2	0.8	17.0	0.8	14.8
<b>5- Transport, Storage and Communications</b>	<b>21.04</b>	<b>177.6</b>	<b>0.7</b>	<b>11.1</b>	<b>-0.1</b>	<b>5.4</b>
Land transport	17.57	187.3	0.8	12.1	-0.2	6.2
Air transport	1.03	183.5	0.0	9.9	0.0	0.3
Post and telecommunications	2.42	104.7	0.0	0.3	0.1	1.0
<b>6- Education</b>	<b>2.43</b>	<b>261.2</b>	<b>1.1</b>	<b>11.7</b>	<b>0.0</b>	<b>14.9</b>
<b>7- Health and Social Work</b>	<b>3.95</b>	<b>313.9</b>	<b>1.0</b>	<b>19.9</b>	<b>0.6</b>	<b>22.8</b>
<b>8- Other Community, Social and Personal Service Activities</b>	<b>1.66</b>	<b>331.8</b>	<b>0.5</b>	<b>20.3</b>	<b>1.6</b>	<b>22.1</b>
<b>Special Groups:</b>						
<b>1- Agriculture, Hunting, Forestry and Fishing</b>	<b>21.98</b>	<b>238.1</b>	<b>1.2</b>	<b>15.9</b>	<b>1.3</b>	<b>5.7</b>
<b>2- Manufacturing</b>	<b>48.06</b>	<b>275.7</b>	<b>6.0</b>	<b>54.2</b>	<b>1.1</b>	<b>8.0</b>
<b>3- Services</b>	<b>29.96</b>	<b>213.9</b>	<b>0.8</b>	<b>13.8</b>	<b>0.2</b>	<b>10.9</b>

**Table 2**  
**Producer Price Index in Iran**  
General and Major Groups Index Numbers  
(1383=100)

Description Period	General Index	Major Groups								Special Groups		
		Agriculture, Hunting and Forestry	Fishing	Manufacturing	Hotels and Restaurants	Transport, Storage and Communications	Education	Health and Social Work	Other Community, Social and Personal Service Activities	Agriculture, Hunting, Forestry and Fishing	Manufacturing	Services
1376	34.7	33.5	29.9	40.3	29.8	32.8	24.4	28.5	28.0	33.4	40.1	29.0
1377	41.2	41.1	38.3	47.1	37.4	37.8	26.9	35.0	33.0	41.0	47.2	34.0
1378	50.6	51.1	45.6	58.7	46.7	45.3	32.2	43.8	39.7	51.0	58.7	40.5
1379	58.8	60.3	57.1	67.9	55.1	49.9	41.2	52.4	47.8	60.2	67.8	46.9
1380	65.3	65.3	63.4	71.4	62.5	61.8	54.7	60.9	60.5	65.2	71.4	57.8
1381	74.0	73.2	78.0	78.8	73.4	73.2	67.3	71.6	67.7	73.3	78.5	69.0
1382	85.6	84.8	81.6	87.2	86.2	87.6	81.4	84.2	84.7	84.8	87.1	84.3
1383	100.0	100.0	100.0	100.0	100.0	100.0	100.0	100.0	100.0	100.0	100.0	100.0
1384	108.8	103.2	115.7	108.2	112.1	111.9	118.7	118.6	115.1	103.6	108.2	113.5
1385	121.4	116.6	127.3	120.5	125.3	121.5	143.4	136.9	132.6	116.9	120.5	126.0
1386	139.5	141.2	142.4	136.3	148.0	136.2	163.5	162.9	158.1	141.2	136.3	143.5
1387	168.6	179.7	173.3	166.7	192.1	149.1	187.5	201.2	209.7	179.5	166.7	163.7
1388	181.1	200.6	203.8	171.7	225.8	158.1	217.4	243.7	260.2	200.7	171.7	181.8
<b>1388</b>												
Bahman	187.4	205.5	207.0	178.8	236.8	159.8	233.8	261.8	275.7	205.5	178.8	188.0
Esfand	189.0	207.0	218.7	179.5	244.9	162.4	233.9	265.3	281.0	207.3	179.5	190.8
<b>1389</b>	187.4	205.5	207.0	178.8	236.8	159.8	233.8	261.8	275.7	205.5	178.8	188.0
Farvardin	190.7	207.9	200.9	180.8	250.9	165.1	234.0	268.5	293.8	207.7	180.8	194.0
Ordibehesht	193.6	209.8	210.1	185.0	255.4	165.3	234.3	277.0	298.7	209.8	185.0	195.7
Khordad	193.7	208.9	232.3	184.1	259.1	165.7	234.7	285.3	303.0	209.6	184.1	197.4
Tir	194.9	213.7	249.3	183.8	260.6	165.4	235.4	289.3	306.8	214.7	183.8	198.1
Mordad	199.0	224.8	251.1	187.0	263.4	165.5	235.7	293.1	309.3	225.5	187.0	198.9
Shahrivar	200.0	220.6	238.2	190.6	265.8	165.6	236.7	296.5	311.7	221.2	190.6	199.7
Mehr	203.8	229.5	239.3	192.7	270.3	167.1	243.9	300.7	318.6	229.8	192.7	202.4
Aban	206.8	235.5	231.7	194.8	274.7	169.6	248.5	303.1	322.3	235.4	194.8	205.2
Azar	208.4	237.5	250.0	195.8	276.6	169.9	258.3	306.6	324.3	237.9	195.8	206.8
Dey	240.3	234.9	244.4	260.0	279.2	176.3	258.3	310.9	330.0	235.2	260.0	212.3
Bahman	248.9	237.7	251.7	275.7	281.1	177.6	261.2	313.9	331.8	238.1	275.7	213.9